



**APPROX. 1,900 SQ FT OF SPACE ON THE FIRST FLOOR. IT HAS A VARIETY OF USES AND IS LOCATED CLOSE TO BURY TOWN CENTRE WITH GOOD ACCESS TO M66.**

## Part Of First Floor

York Street Mill, Bury, BL9 7AR

Light Industrial, Showroom

## TO LET

1,900 sq ft

(176.52 sq m)

- APPROX. 1,900 SQ FT
- CLOSE TO BURY CENTRE
- FIRST FLOOR
- STREET PARKING NEARBY

# Part Of First Floor, York Street Mill, Bury, BL9 7AR

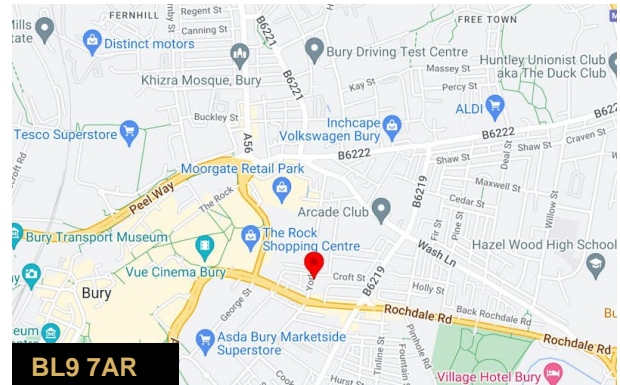
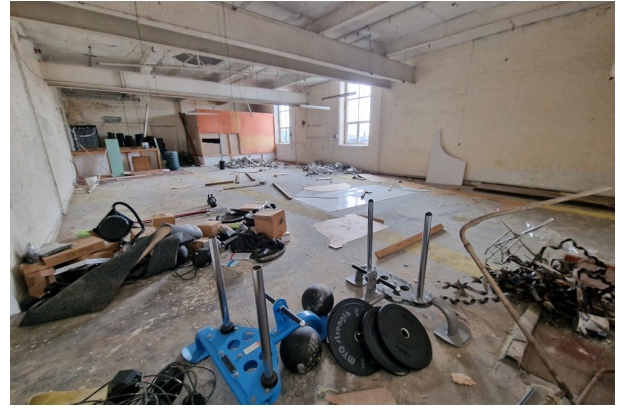
## Summary

Available Size	1,900 sq ft
Rent	£1,000 per month
Business Rates	Rates Will Need Determining By Bury MBC
Car Parking	N/A
VAT	Not applicable
Estate Charge	N/A
EPC Rating	Upon Enquiry

## Description

Part of the first floor of York Street Mill. The space is approx. 1,900 SQ FT and offers versatile space which would suit a variety of uses. The property is located just off Rochdale Road in Bury, close to the centre with free street parking located close by.

The property is accessed via stairs which are shared with the gym next door, however the space itself is self contained. Please note that there is no W.C. at present in the space and the incoming tenant would be required to fit this at their own expense if required.



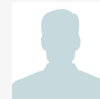
## Viewing & Further Information



**Simon Harvey**

0161 764 4440

commercial@pearsonferrier.co.uk



**Stuart Pearson**

07956405651

stuart.pearson@pearsonferrier.co.uk

**More properties @ [pearsonferrier.co.uk](https://www.pearsonferrier.co.uk)**