



GROUND FLOOR APPROX. 6,900 SQ FT. IDEAL FOR A SHOWROOM, DISTRIBUTION OR SIMILAR. CLOSE TO BURY TOWN CENTRE AND M66 MOTORWAY.

Unit 2

York Street Mill, Bury, BL9 7AR

Distribution Warehouse, Light
Industrial, Showroom, Industrial /
Warehouse

TO LET

6,900 sq ft

(641.03 sq m)

- APPROX. 6,900 SQ FT
- IDEAL FOR SHOWROOM, DISTRIBUTION OR SIMILAR
- CLOSE TO BURY CENTRE
- GOOD MOTORWAY LINKS

Unit 2, York Street Mill, Bury, BL9 7AR

Summary

Available Size	6,900 sq ft
Rent	£52,000 per annum
Business Rates	The Space Needs To Be Assessed By The Council To Establish Rates
Car Parking	N/A
VAT	Not applicable
Estate Charge	N/A
EPC Rating	Upon Enquiry

Description

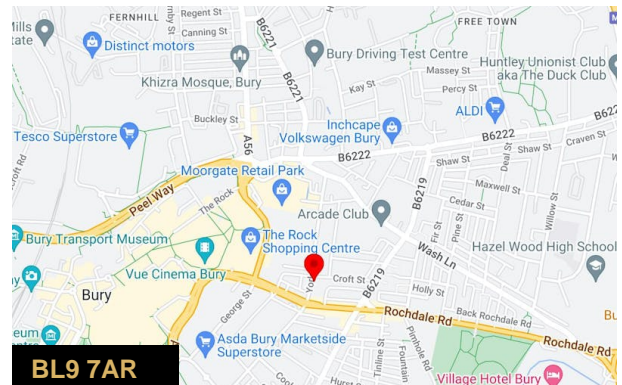
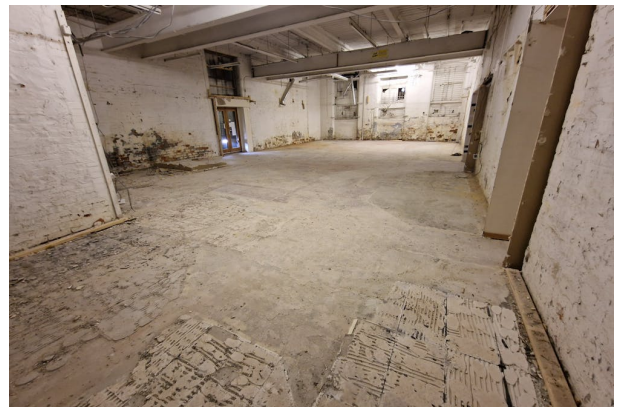
A ground floor space located just off Rochdale Road in Bury, close to the town centre and offering good links to the M66 motorway. Please note that there is no access for vehicles to enter the unit. The space on offer is approx. 6,900 sq ft.

The unit is let as one space and comprises different rooms (please see the video) including a kitchen area and W.C.. It has a pedestrian door access to the front and also to the side.

The space was previously used as a showroom and would suit that, or a variety of different uses, subject to any consents required.

Location

The property is located just off Rochdale Old Road on York Street.



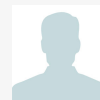
Viewing & Further Information



Simon Harvey

0161 764 4440

commercial@pearsonferrier.co.uk



Stuart Pearson

07956405651

stuart.pearson@pearsonferrier.co.uk

More properties @ [pearsonferrier.co.uk](https://www.pearsonferrier.co.uk)