



Detached Garage and Cellar Storage

Garage to the Rear

466 Victoria Avenue, Manchester, M9 0PL

Distribution, Yard

TO LET

- Detached Garage
- Cellar Storage
- Located a few minutes from the M60
- Ideal Storage for a local builder or trade

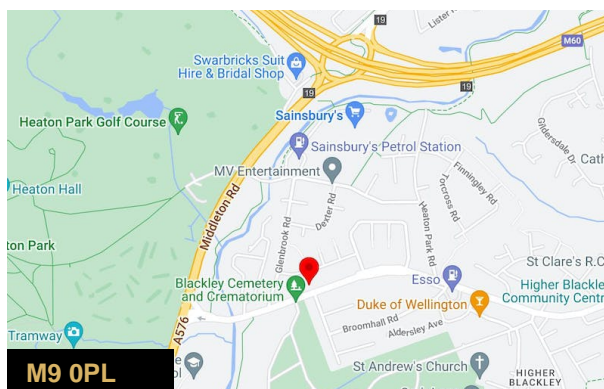
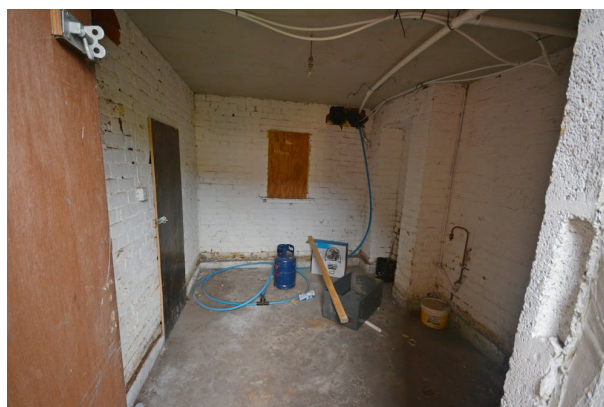
Garage to the Rear, 466 Victoria Avenue, Manchester, M9 0PL

Summary

Rent	£290 per month
Business Rates	Upon Enquiry
EPC Rating	Upon Enquiry

Description

Detached garage and basement storage located just of Victoria Avenue, within a short drive of Junction 19 of the M60. Located to the rear of a row of shops. Would prove ideal storage for a local builder or tradesman.



Viewing & Further Information



Simon Harvey

0161 764 4440

commercial@pearsonferrier.co.uk

More properties @ [pearsonferrier.co.uk](https://www.pearsonferrier.co.uk)