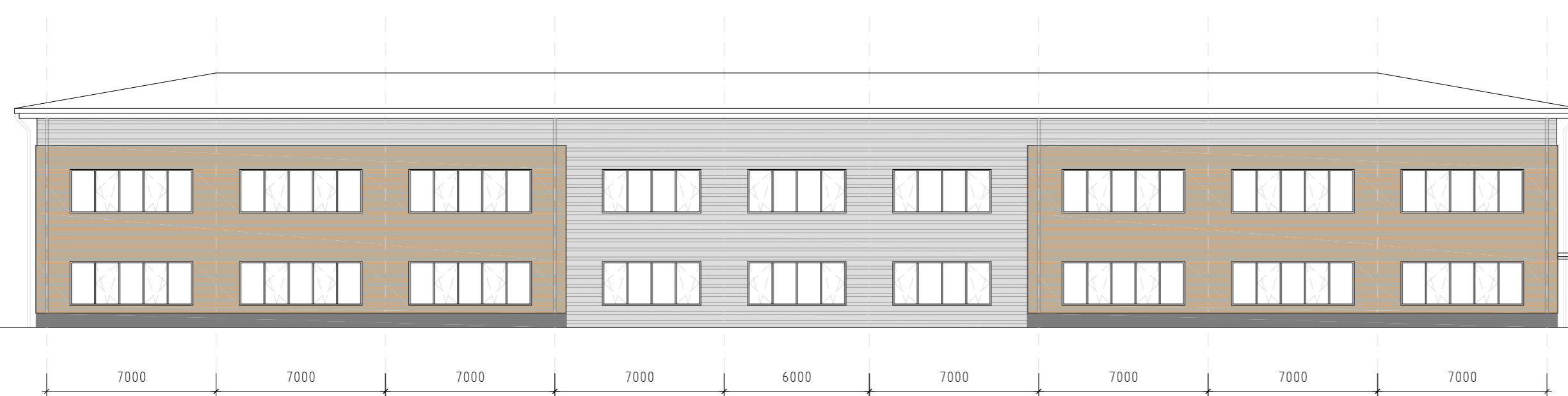
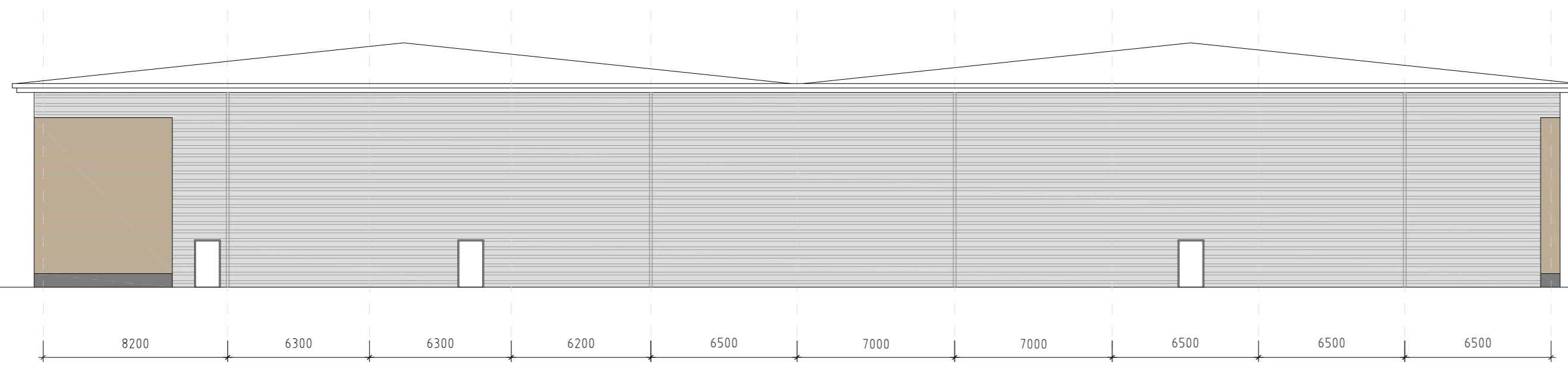


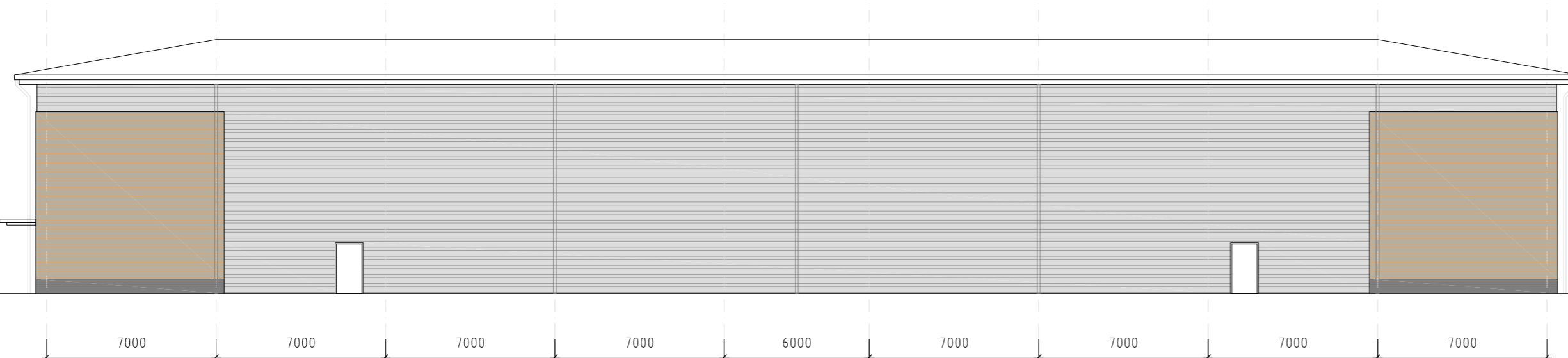
EAST ELEVATION



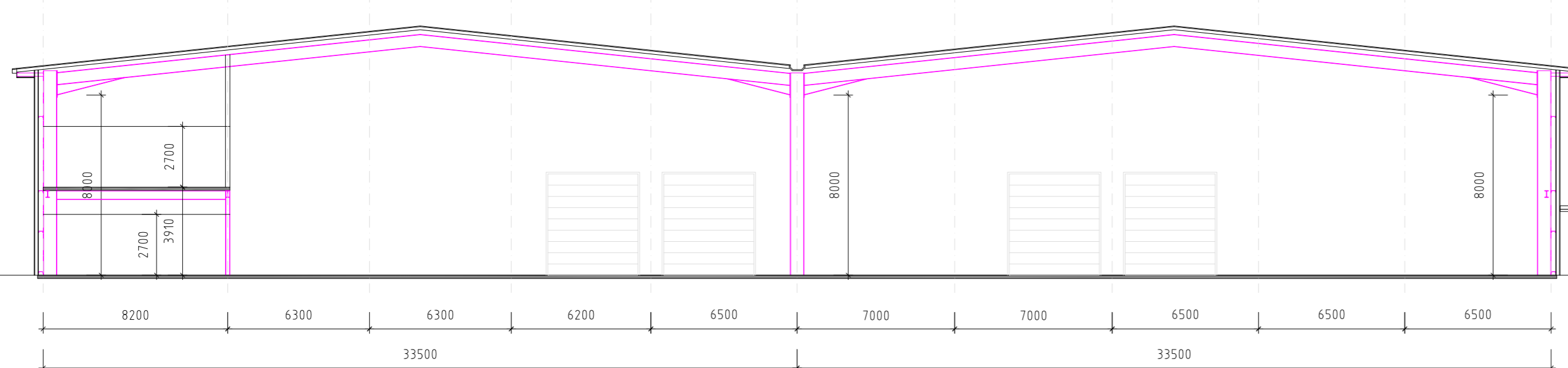
NORTH ELEVATION



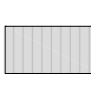





WEST ELEVATION

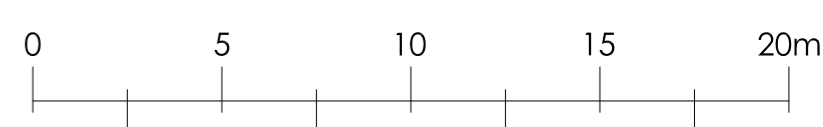


SOUTH ELEVATION



SECTION

-  Profiled roof cladding in Goosewing Grey
-  Gutter and fascia in RAL9006
-  Horizontally laid trapezoidal built-up wall cladding in Metallic Silver RAL9006
-  Horizontally laid Microrib composite wall cladding in Metallic Silver RAL9006
-  Horizontally laid timber wall cladding rainscreen over Microrib composite cladding
-  Facing slip brick wall cladding rainscreen over Microrib composite cladding
- Loading doors in RAL9006
- Powder coated windows and curtain walling in RAL9007



Rev D:
Rev C:
Rev B:
Rev A:

Notes:
This drawing is the sole copyright of IAN C KING Associates and no part may be reproduced without the written consent of the above

Job
**BILLINGSHURST
DUNMORE GROUP**

Title
**PHASE II
UNIT 17 (sk-46)
ELEVATIONS & SECTION**

Dwg No D-101-sk-46-Unit 17 elevations	Date 4-2020	Scale 1:200 (A1)	Rev -
Drawn	Checked	Planning drawing	

IAN C KING
ASSOCIATES - ARCHITECTS
5 St George's Court
131 Putney Bridge Road
London SW15 2PA
Tel: 020 8870 8937
E-mail: ick@iancking.co.uk
IAN C KING Associates - Architects is the trading name of Garmony Ltd