

thebreadfactory-offices.co.uk

THE
BREAD
FACTORY

1A BROUGHTON STREET, BATTERSEA SW8 3QJ

COMPREHENSIVELY REFURBISHED WAREHOUSE OFFICES
4,050 - 12,000 SQ FT TO LET

THE
BREAD
FACTORY

WELL DESIGNED
FLEXIBLE OFFICE
ACCOMMODATION IN A
UNIQUE WAREHOUSE
CONVERSION

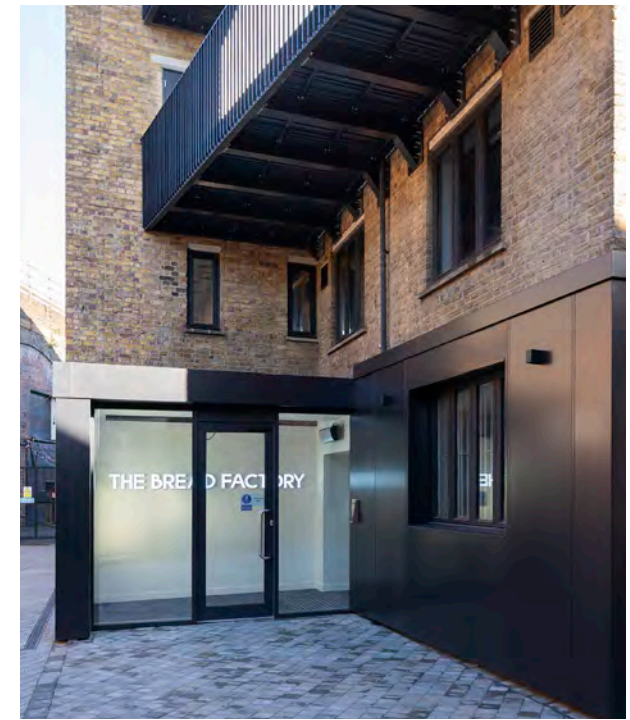


The Bread Factory is believed to date back to the King's Bread and Biscuit Company Works of 1882.

The 4-storey building comprises a comprehensively refurbished office building with extended and remodelled ground floor entrance, reception and end of journey facilities including showers and secure cycle store, adjacent to the original double-height warehouse, separately occupied.

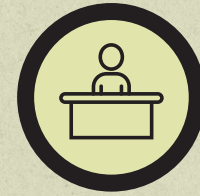
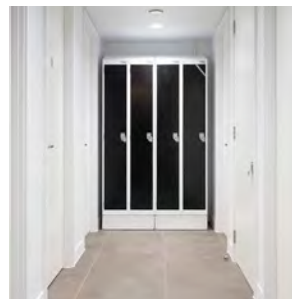
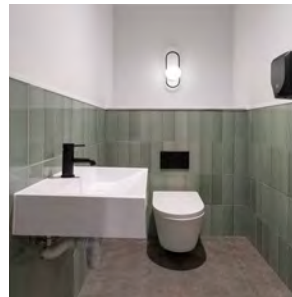
The upper floors are laid out predominantly over second and third floors with newly added balconies and potential for roof terraces on the third floor.

The refurbishment includes a new lift, M&E and air-conditioning. The site benefits from 3 phase power and capped off supply for EV charging to the parking spaces.

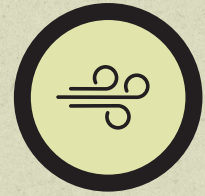




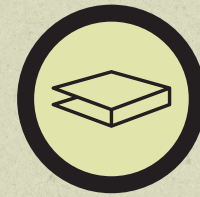
CONTEMPORARY DESIGN WITH NEW EXTERNAL BREAKOUT AREAS EXPOSED SERVICES & COMMON PARTS



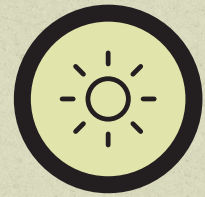
New enlarged reception



New air-conditioning



New raised floors



Balconies



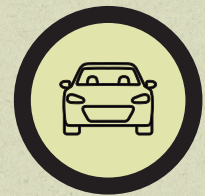
New 8 person
passenger lift



Showers



EPC Rating - B40



On-site parking



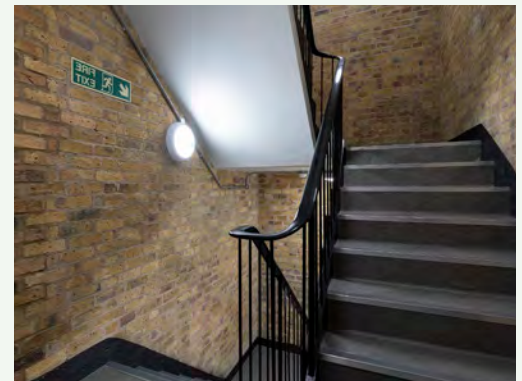
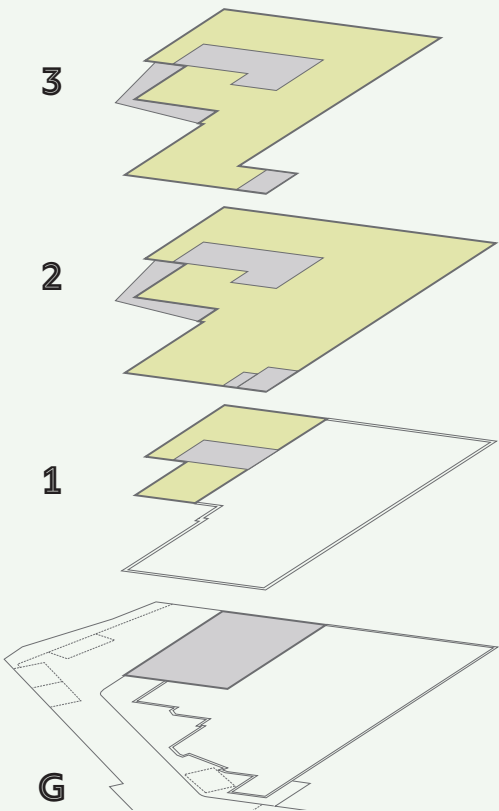
Secure bicycle store



Capped-off EV points

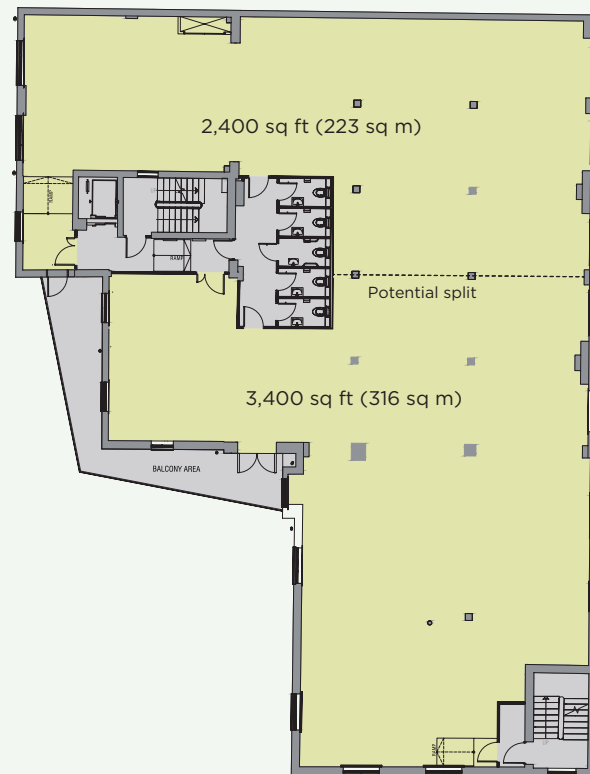
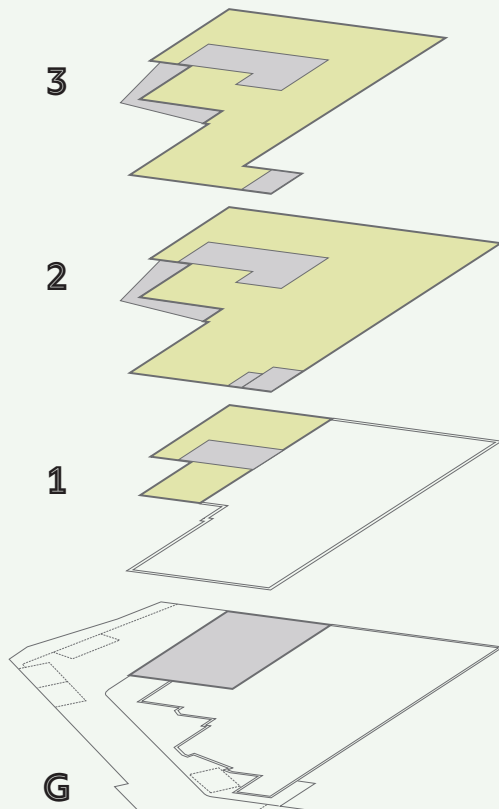
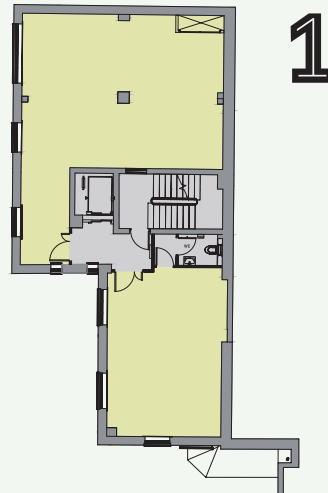
AVAILABILITY

	sq ft	sq m
Ground (Reception)	924	86
First (Suite 1)	1,160 (700)	108 (65)
(Suite 2)	(460)	(43)
Second (Suite 1)	5,800 (2,400)	539 (223)
(Suite 2)	(3,400)	(316)
Third	4,050	376
Total	11,934	1,109

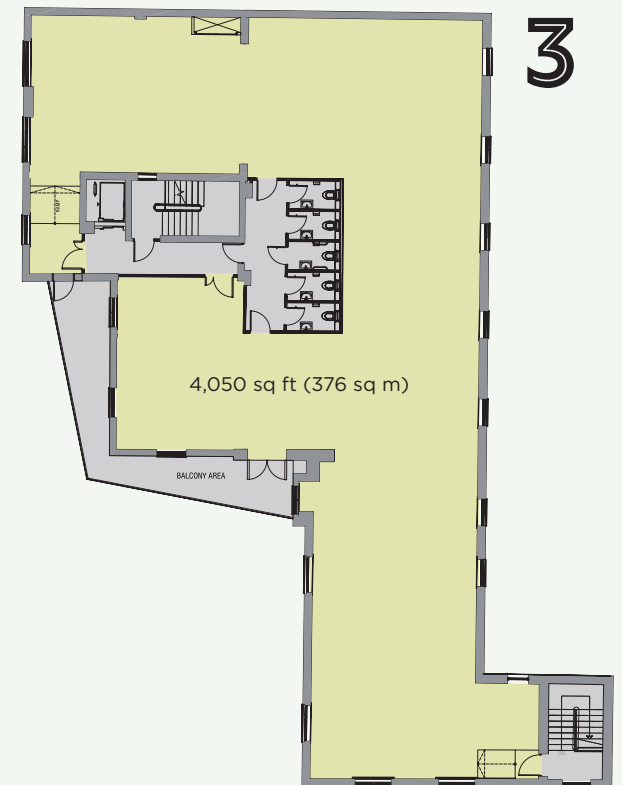


AVAILABILITY

	sq ft	sq m
Ground (Reception)	924	86
First (Suite 1) (Suite 2)	1,160 (700) (460)	108 (65) (43)
Second (Suite 1) (Suite 2)	5,800 (2,400) (3,400)	539 (223) (316)
Third	4,050	376
Total	11,934	1,109



2



3

IDEALLY LOCATED FOR AMENITIES AND TRANSPORT CONNECTIONS

The Bread Factory is located close to the junction of Broughton Street with Queenstown Road. Battersea Power station with it's abundance of restaurants and leisure facilities is only a short walk away walk.

The nearest railways stations are at Queenstown Road (London Waterloo 8mins/Clapham Junction 3mins) approximately 7 minutes walk away and Battersea Park (London Victoria 4mins) approximately 10 minutes walk away.

The closest London Underground connection to the property is Battersea Power Station on the Northern Line extension.

Numerous bus routes pass along Queenstown Road to Sloane Square, Knightsbridge and Vauxhall and include:

- 452 - Vauxhall to Ladbroke Grove via Wandsworth
- 137 - Clapham to Marble Arch
- 156 - Wimbledon to Vauxhall via Clapham Junction

Santander cycle hire is also available nearby.



THE BREAD FACTORY

1A BROUGHTON STREET, BATTERSEA SW8 3QJ



Terms
Upon application.

Viewing
By appointment through the joint sole agents.

Misrepresentation act 1967 - Lambourn Commercial and Bonsors for themselves and for the vendors or lessors of this property, whose agents they are, give notice that: 1. The particulars are set out as a general outline only for the guidance of intended purchasers or lessees and do not constitute nor constitute part of an offer or contract. 2. All descriptions, dimensions, reference to condition and necessary permissions for use and occupation, and other details are given without responsibility and any intending purchasers or tenants should not rely on them as statements or representations of fact but must satisfy themselves by inspection or otherwise as to the correctness of each of them. 3. No person in the employment of Lambourn Commercial and Bonsors has any authority to make any representation or warranty whatsoever in relation to this property. Finance Act 1989 - Unless otherwise stated, all prices and rents are quoted exclusive of Value Added Tax (V.A.T.). Any intending purchasers or lessees must satisfy themselves independently as to the incidence of V.A.T. in respect of any transaction and also make enquiries of the Valuation Office or relevant rating authority in respect to premises Rateable Values and/or Rates Payable. Compiled February 2024.



thebreadfactory-offices.co.uk



Andrew Pollard
andrewp@bonsors.com
020 8247 9505

Tom Batey
thomasb@bonsors.com
0208 247 9509



Damian Lambourn
dl@lcprop.com
07796 953360