

**NOTES:**

1. To be read in conjunction with Architects scope and specification document

**General notes**

Do not scale from this drawing for purposes other than the relevant Project Agreement. This drawing must not be used for land transfer purposes. This drawing must be read in conjunction with all other relevant drawings, specifications and schedules. Residential 'NIA' is measured and calculated generally in accordance with the description of 'Gross Internal Area' within paragraph 8 of the Nationally Described Space Standard (May 2016). Residential 'GIA' and 'GEA' are measured and calculated generally in accordance with the description of 'IPMS 2 - Residential' and 'IPMS 1' respectively within RICS 'Property Measurement', 2nd Edition (January 2018). Non-residential 'GIA' and 'GEA' are measured and calculated generally in accordance with the description of 'IPMS 2 - Offices' and 'IPMS 1' respectively within RICS 'Property Measurement', 2nd Edition (January 2018). All areas have been calculated in metric units. All setting out must be checked on site. Levels refer to Ordnance Datum Newlyn, unless stated otherwise. This drawing must not be used on site unless issued for construction. Refer to Information Plan for status definitions.

Drawing revision prefix (not applied to sketches):  
P = Pre-Contract  
C = Contract

© Assael group of companies 2024

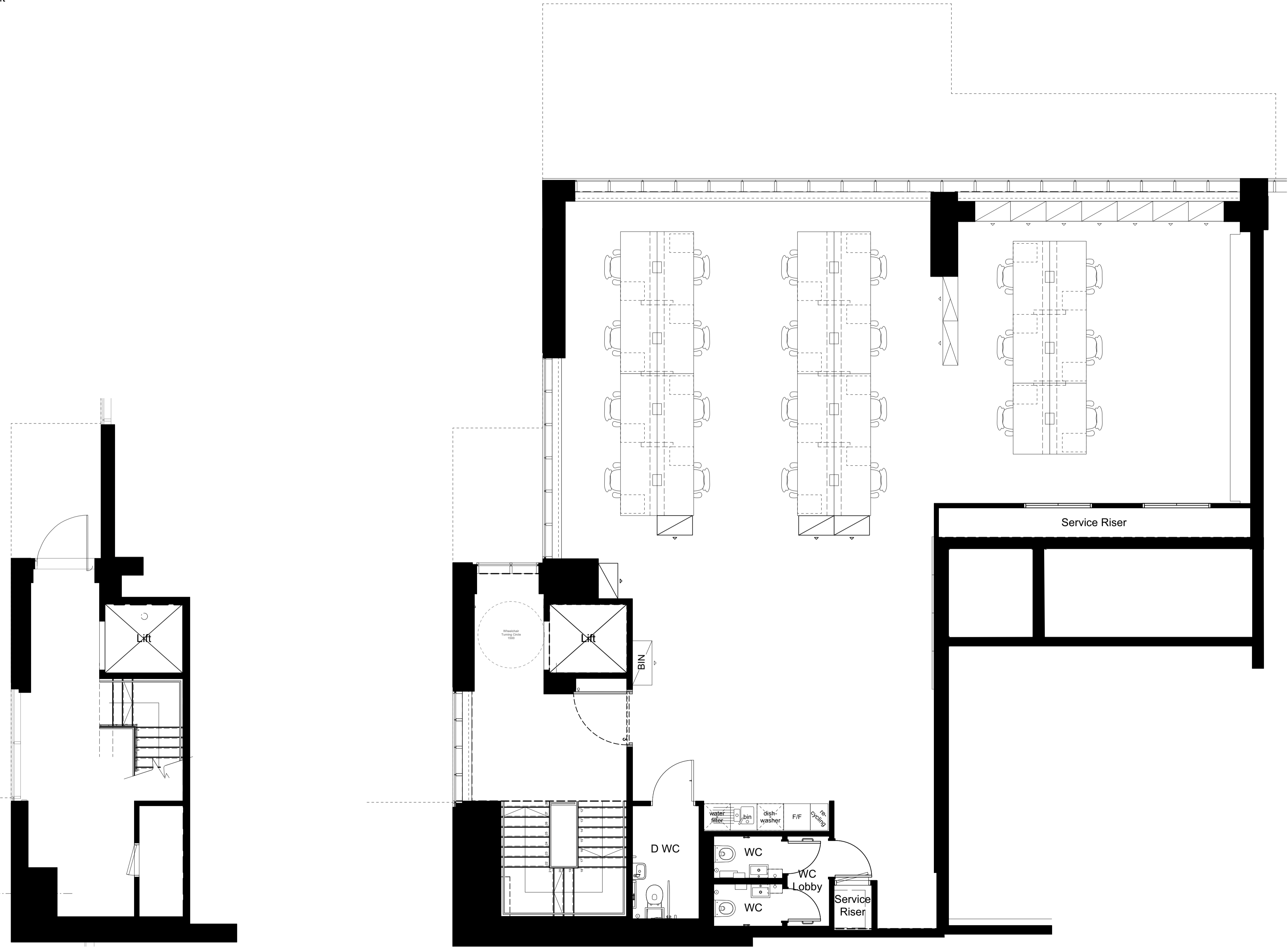
This drawing is issued by the relevant Assael group company which is party to the relevant Project Appointment Letter or Project Agreement to which this drawing relates. Nothing in this document shall be construed as being issued by or on behalf of, or constituting any advice or commitment from, any other Assael group company. A full list of Assael group of companies can be found at [www.assael.co.uk/terms-of-use/](http://www.assael.co.uk/terms-of-use/). We have prepared this drawing in accordance with the instructions of the Client under the agreed Terms of Appointment. This document is for the sole use and benefit of the Client and the relevant appointed Assael company shall not be responsible for any use of the document or its contents for any purpose other than that for which it was prepared and provided. Should the Client require to pass copies of the document to other parties this should be for coordination purposes only and the whole of the file should be so copied, but no professional liability or warranty shall be extended to other parties in this connection without the explicit written agreement thereto by the company under the agreed Terms of Appointment.

When this drawing is issued in DWG format it is an uncontrolled version issued to enable the recipient to prepare their own documents/models/drawings for which they are solely responsible. It is based on background information current at the time of issue. The relevant Assael group company accepts no liability for any such alterations or additions to or discrepancies arising out of changes to such background information which occur to that information after it has been issued. The relevant Assael group company prepared this drawing using Vectorworks 2021 and does not accept liability for any loss or degradation of that information held in the drawing resulting from the translation from the original file format to any other file format or from the recipient's reading of it in any other programme or another version of the programme referred to above.

Electronic file reference

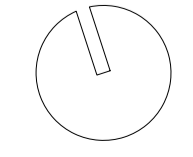
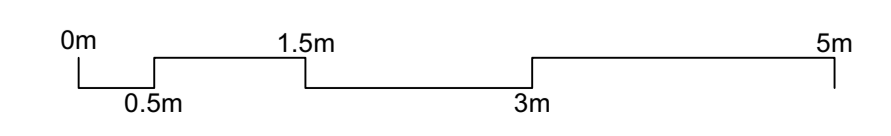
A0153 2000 GA Annexe Sheets v2021.vwx

Rev	Revision note	Date	Drawn	Check
1	For Information	26/01/24	JB	JP



Ground Floor

First Floor



Client

**Assael Architecture Ltd**

Project title

**New Offices  
Upper Richmond Road**

Drawing title

**Annexe Furniture Layout  
Ground and First Floor**

Scale @ A1

Issue date

**1:50**

**26/01/24**

Drawing number

**A0153-ASA-ZZ-ZZ-SK-A-1004**

Proposed status

Revision

**for Information**

**R1**

Discipline

**Architecture**

**Assael**

Assael Architecture  
123 Upper Richmond Road  
London SW15 2TL

+44 (0)207 736 7744  
info@assael.co.uk  
www.assael.co.uk