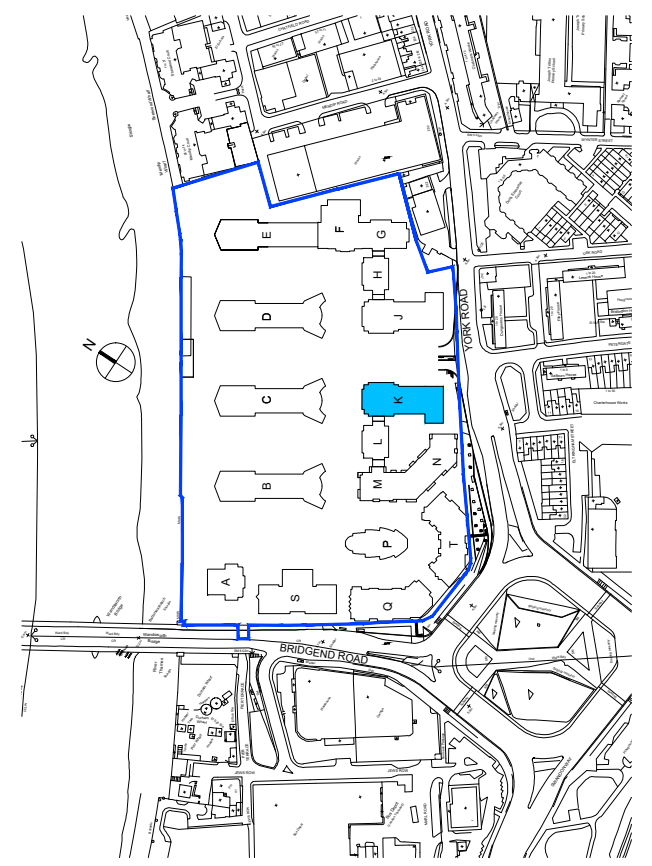
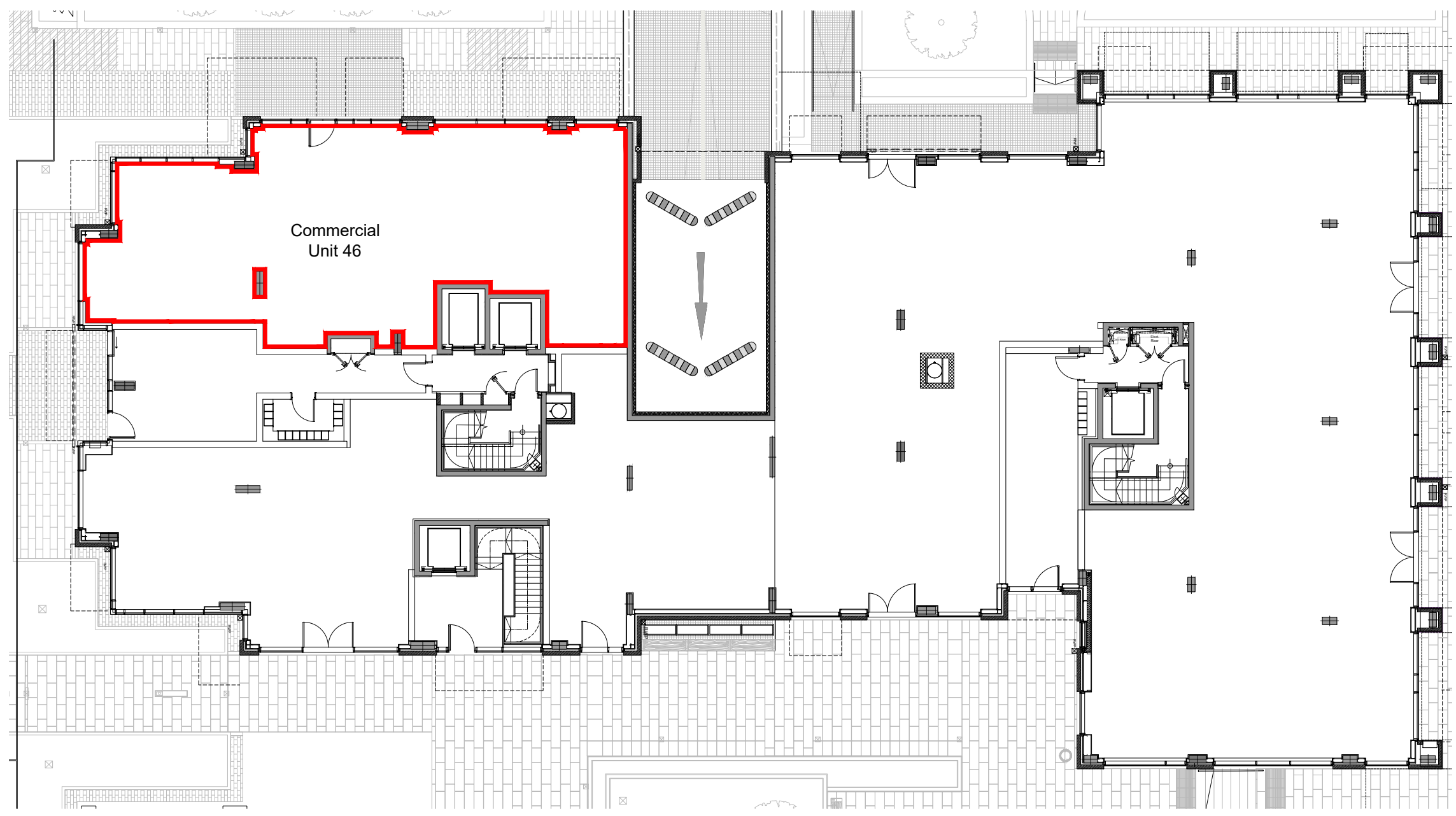


Contractors are not to scale dimensions from this drawing



01 Commercial Unit 46
Scale 1:200



02 Location Plan
Scale 1:5000

KEY:

- █ Estate Demise
- █ Property Demise

Rev	Description	Date	Intl
B	Unit number revised as requested by SGDL.	15.07.21	JA
A	Revised as requested by SGDL.	21.09.17	JG
-	Issued for information	09.09.17	CD

15.07.2021 James Aplin U:\31097-1\Issued\210715 - SGDL Issue Unit 46\31097-1-K-400-00-46.dwg

BroadwayMalyan^{BM} Architecture Urbanism Design

T: +44 (0)20 7261 4200 F: +44 (0)20 7261 4300 E: Lon@BroadwayMalyan.com
Riverside House, Southwark Bridge Road, London SE1 9HA

London/Madrid/Lisbon/Warsaw/Abu Dhabi/ Dubai/
Singapore/Shanghai/Manchester/Birmingham/
Liverpool/Reading/Weybridge/
www.BroadwayMalyan.com

Client
St. George
Project

Battersea Reach
Description

**Conveyance Plan Block K
Commercial Unit 46**



St George
Designed for life

St George South London Limited
St George House | 17-19 Imperial Road | Fulham | SW6 2AN
Telephone. 020 7471 4444 | Fax. 020 7471 4310

Status
For Information

Scale	Drawn	Date
1:200@A3	CD	Sep'17
Job number	Drawing number	Revision
31097-1	K-400-00-46	B

Original size 100mm @ A3 Copyright Broadway Malyan Limited