



A high quality, secure serviced office centre

One

St Peter's Road, St. Peters Road,
Maidenhead, SL6 7QU

Office

TO LET

194 to 379 sq ft

(18.02 to 35.21 sq m)

- Flexible terms
- 24/7 access with key fob entry
- Air Conditioning
- On site parking
- Meeting room and receptionist
- Close to Furze Platt train station

One, St Peter's Road, St. Peters Road, Maidenhead, SL6 7QU

Summary

Available Size	194 to 379 sq ft
Rent	£1,150.00 per month
Business Rates	Inclusive
Service Charge	Inclusive
EPC Rating	A (24)

Description

ONE St Peters Road provides secure Grade A office space on flexible tenancies. The two storey building benefits from 24/7 fob access, air conditioning, CAT 5 wiring with fibre broadband and telecoms, meeting room, receptionist and kitchen and WC facilities on each floor. There is ample on site car parking.

Location

Situated a five minute drive from Maidenhead Town Centre, ONE St Peters Road is a short walk from Furze Platt train station and has good access to the A404(M), M4 and M40.

Accommodation

Name	sq ft	sq m	Rent
1st - Suite 15	194	18.02	£1,150 /month
1st - Suite 9	185	17.19	£820 /month
Total	379	35.21	

Viewings

By arrangement with the agent.

Terms

Available on flexible, all inclusive terms.

Legal Costs

Each party will be responsible for their own legal fees.

VAT

All figures quoted are exclusive of VAT which we understand is chargeable.



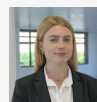
Viewing & Further Information



James Emes

01628439006 | 07806487124

j.emes@pagehardyharris.co.uk



Sophie Holmes

01628439006 | 07763 565056

sophie@pagehardyharris.co.uk

More properties @ pagehardyharris.co.uk