



## Basepoint Business Centre, Stroudley Road

Basingstoke, RG24 8UP

**(Serviced offices) with easy  
in/easy out flexible terms**

**118 to 720 sq ft**

(10.96 to 66.89 sq m)

- Flexible licence agreements
- Facilities include free parking, meeting rooms, breakout area, CCTV
- Rents inclusive of external repairs, building insurance, waste disposal, service charge, on-site management.
- Digital phone system
- Superfast broadband

## Summary

|                |                  |
|----------------|------------------|
| Available Size | 118 to 720 sq ft |
| Business Rates | Upon Enquiry     |
| EPC Rating     | Upon Enquiry     |

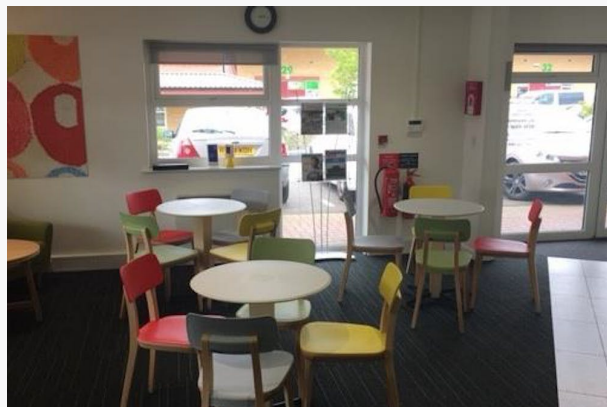
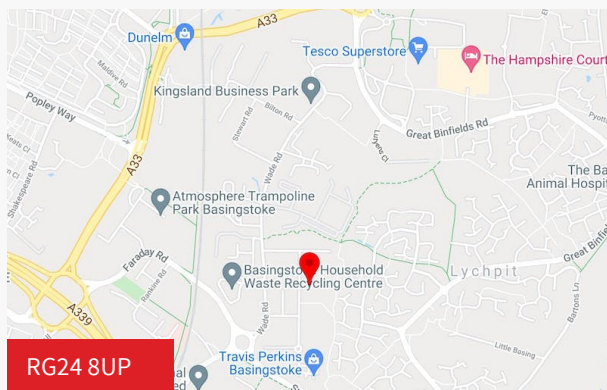
## Description

(Serviced offices) with easy in/easy out flexible terms.

Basepoint Business Centre is a managed business centre, in a safe attractive courtyard setting with onsite parking and operates on a short term license agreement. This means you are only ever committed to giving a minimum of two weeks written notice to go out at the end of a calendar month. It also has its own telephone and broadband systems which operates on the same short term basis as the license agreement.

Meeting rooms are also available for hire Monday to Fridays at an hourly rate. There are a range of offices, studios and Workshops from small 2 person office's up to 850 sq ft workshop units.

A visit to the Centre is strongly recommended when you can discuss your business needs and be provided with all the information you would need to form the basis for your budget.



## Viewing & Further Information

Edward Rees

01256 462222 | 07818 451040

erees@curchodandco.com

More properties @ londonclancy.com

Misrepresentation Act 1967 – London Clancy for themselves and for the vendors/lessors of this property whose agents they are, give notice that: a) These particulars are set out as a general outline only for the guidance of intending purchasers/lessees and do not constitute part of an offer or contract. b) All descriptions, dimensions, references to condition and necessary permissions for use and other details are given in good faith and are believed to be correct, but any intending purchaser or lessee should not rely on them as statements or representations of fact but satisfy themselves by inspection or otherwise as to the correctness of each of them. c) We have not tested any of the service installations and any purchaser/lessee must satisfy themselves independently as to the state and condition of such items. d) No person in the employment of London Clancy has any authority to make or give any representations or warranties whatsoever in relation to this property. Finance Act 1989 – Unless otherwise stated, all prices and rents are quoted exclusive of Value Added Tax. Any intending purchaser or lessee must satisfy themselves independently as to the incidence of VAT in respect of any transaction. Generated on 01/09/2023



**BASEPOINT**  
business centres

# Basepoint Basingstoke

Stroudley Road

Basingstoke

Hampshire

RG24 8UP

01256 406666

[basingstoke@basepoint.co.uk](mailto:basingstoke@basepoint.co.uk)

# Availability 1st February 2022

| Unit No. | Approximate Size |      | 24 Month Rental Term | 12 Month Rental Term | Month to Month Rental | Notes   |
|----------|------------------|------|----------------------|----------------------|-----------------------|---|
|          | Sq Ft            | Sq M |                      |                      |                       |   |
| 7a       | 118              | 11   | £557                 | £589                 | £655                  | 2-4 Person Office<br><b>AVAILABLE NOW</b>     |
| 7c       | 86               | 8    | £435                 | £459                 | £511                  | 1-2 Person Office<br><b>AVAILABLE NOW</b>     |
| 9a       | 195              | 18   | £803                 | £849                 | £944                  | 4-6 Person Office<br><b>AVAILABLE NOW</b>     |
| 9b       | 195              | 18   | £803                 | £849                 | £944                  | 4-6 Person Office<br><b>AVAILABLE NOW</b>     |
| 12c      | 183              | 17   | £585                 | £619                 | £589                  | 4 Person Office<br><b>AVAILABLE MARCH TBC</b> |
| 26a      | 148              | 14   | £680                 | £719                 | £799                  | 2-4 Person Office<br><b>AVAILABLE NOW</b>     |
| 32       | 600              | 56   | £1634                | £1729                | £1922                 | WORKSHOP<br><b>AVAILABLE SOON</b>             |
| 39       | 720              | 67   | £1822                | £1929                | £2144                 | WORKSHOP<br><b>AVAILABLE APRIL</b>            |

Reserved Coworking available  
at £233 per desk, per month,  
on a Month to Month agreement,  
with term discounts available for  
12 and 24 months

All prices are not inc. VAT  
Prices correct on 01/02/22 and are subject to change



A Welcoming Friendly Environment



Office Space



Secure 24-Hour Access



Lounge Area at Reception



Meeting Room For Hire



Workshop Space

# Photos

---

# Centre Features

- Flexible terms and longer term agreements available
- Flexible Workspace Usage, Office, Light Industrial Workshop, Retail
- On-site parking options available
- 24/7 access, CCTV
- Mailbox and Virtual Office Packages
- Reserved Coworking Desk Packages
- Telecoms / Broadband provided and managed on-site
- Meeting room with TV / Catering provided
- On-site Management team / Receptionist to greet visitors during normal office hours
- Access to printing, scanning, photocopying
- Access to over 3000 business lounges globally (International Workplace Group)
- Dog friendly
- Regular Networking Opportunities and Community Feel



**BASEPOINT**  
business centres

ground floor

| Unit No. | Area(m <sup>2</sup> ) | Area(£) |
|----------|-----------------------|---------|
| 1a       | 11                    | 168     |
| 1b       | 11                    | 168     |
| 2        | 46                    | 490     |
| 3        | 28                    | 300     |
| 4        | 11                    | 145     |
| 5        | 19                    | 200     |
| 6        | 16                    | 170     |
| 11       | 28                    | 300     |
| 14       | 28                    | 300     |
| 17       | 11                    | 155     |
| 18       | 11                    | 150     |
| 19       | 42                    | 455     |
| 20       | 10                    | 120     |
| 21       | 20                    | 240     |

first floor

| Unit No. | Area(m <sup>2</sup> ) | Area(£) |
|----------|-----------------------|---------|
| 7        | 46                    | 500     |
| 8a       | 21                    | 225     |
| 8b       | 21                    | 210     |
| 9a       | 18                    | 195     |
| 9b       | 18                    | 195     |
| 10       | 20                    | 420     |
| 11       | 41                    | 440     |
| 12       | 30                    | 330     |
| 14       | 30                    | 325     |
| 22       | 20                    | 200     |
| 23       | 23                    | 230     |
| 24       | 22                    | 240     |
| 25       | 43                    | 460     |
| 26a      | 14                    | 148     |
| 26b      | 19                    | 200     |
| 28a      | 16                    | 167     |
| 27       | 27                    | 290     |
| 28       | 26                    | 275     |

workshops

| Unit No. | Area(m <sup>2</sup> ) | Area(£) |
|----------|-----------------------|---------|
| 29       | 16                    | 600     |
| 30       | 16                    | 600     |
| 31       | 16                    | 600     |
| 32       | 16                    | 600     |
| 33       | 16                    | 600     |
| 34       | 16                    | 600     |
| 35       | 16                    | 600     |
| 36       | 16                    | 600     |
| 37       | 16                    | 600     |
| 38       | 107                   | 1150    |
| 39       | 47                    | 720     |
| 40       | 72                    | 780     |
| 41       | 10                    | 300     |
| 42       | 10                    | 300     |
| 43       | 16                    | 600     |
| 44       | 68                    | 730     |
| 45       | 42                    | 670     |
| 46       | 40                    | 435     |
| 47       | 40                    | 430     |
| 48       | 10                    | 425     |
| 49       | 42                    | 450     |



first floor



ground floor



first floor

# Basepoint Business Centre Basingstoke