

TO LET HYBRID INDUSTRIAL UNITS

2 Storey, 1,550 sq. ft.

A flexible workspace to suit your business needs

MANDALE PARK

M24

GREENSIDE WAY,
MIDDLETON, M24 1SW



Mandale
Group

 CUSHMAN &
WAKEFIELD

Sixteen.

MANDALE PARK

M24

GREENSIDE WAY,
MIDDLETON,
M24 1SW



VIEW OUR
VIRTUAL TOUR

cushmanwakefield.com
sixteenrealestate.com

LOCATION:

Mandale Park M24 is situated in a well-established industrial area of Middleton in Greater Manchester. The business park is located just 5 miles from Manchester City Centre and is easily accessed by both the M60 and M62.

DESCRIPTION:

We will be constructing 22 hybrid 2 storey industrial units.

Each 1,550sq. ft. unit comes complete with a WC, kitchenette, electric roller shutter, BT connection, 3-phase electricity and water, ensuring a hassle-free and efficient work environment from day one.

The ground floor warehouse is perfect for storage whilst the load bearing first floor can be customised into limitless configurations suitable for any business.

TERMS:

Available by way of a new full repairing and insuring lease with the enclosed cost shown incorporated.

SERVICES:

The properties will have 3 phase electric, water and BT. Each service is individually metered so you're in control of your own consumption.

VAT:

All figures quoted are exclusive of VAT which will be applied.

EPC:

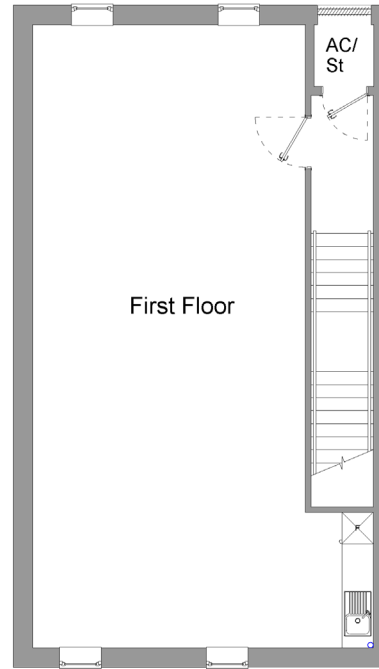
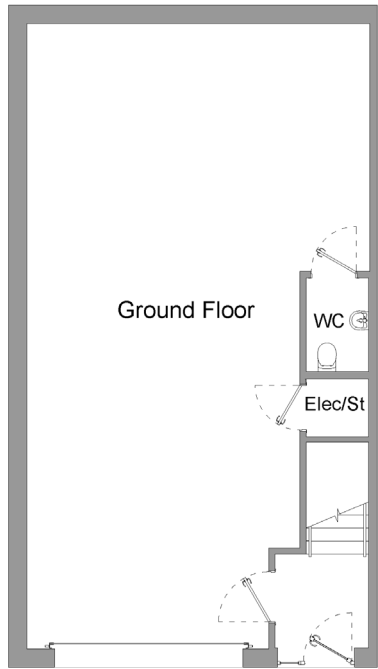
To be provided upon completion of each unit.

RESERVATION:

Contact us today for further information and to reserve a property.

Type	UNIT SQ. FT.	FLOORS	ANNUAL RENT	SERVICE CHARGE	INSURANCE
Hybrid	1,550	2	£25,000 + VAT	£620 + VAT	£300 + VAT





(1,550 sq. ft. each)



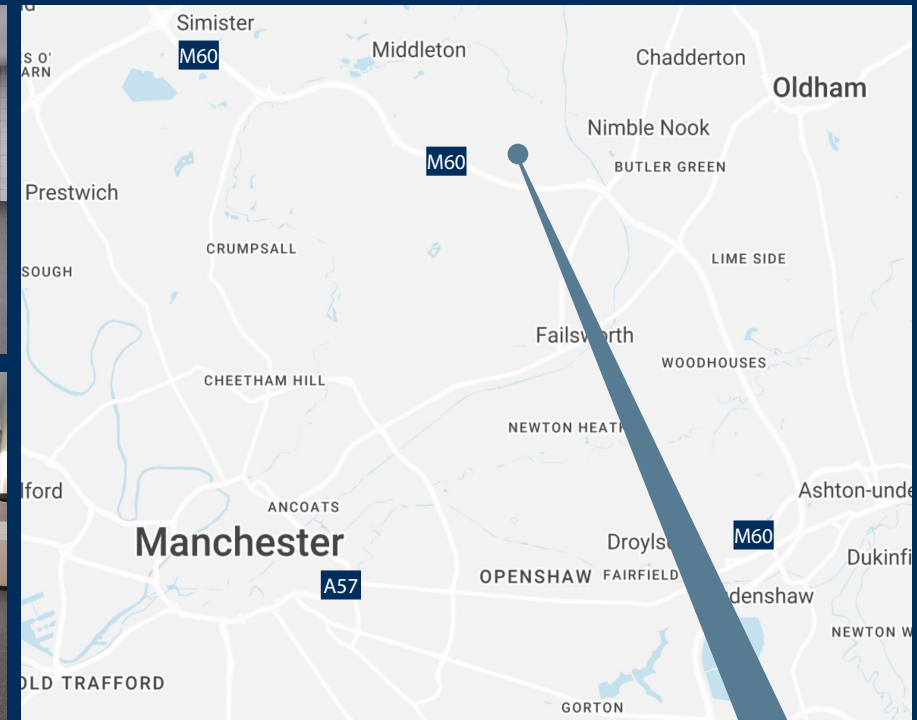
MANDALE PARK

M24

GREENSIDE WAY,
MIDDLETON,
M24 1SW



VIEW OUR
VIRTUAL TOUR



MANDALE PARK

M24



For details contact:

Jack Sullivan
07824 442 173
jack.a.sullivan@cushwake.com

Rob Taylor
07825 193 365
rob.p.taylor@cushwake.com



For details contact:

Andy Backhouse
07548 596 271
andy@sixteenrealestate.com

Cameron Forsyth
07563 249 911
cameron@sixteenrealestate.com

cushmanwakefield.com
sixteenrealestate.com

IMPORTANT NOTICE: These details were compiled July 2021 and whilst every reasonable effort has been made by Mandale Business to ensure accuracy, interested parties are strongly advised to take appropriate steps to verify by independent inspection or enquiry all information for themselves and to take appropriate professional advice. (i) No description or information given about the property or its value, whether written or verbal or whether or not in these particulars ('information') may be relied upon as a statement of representation or fact. Mandale Business and their Agents have any authority to make any representation and accordingly any information given is entirely without responsibility on the part of Mandale Business the seller/lessor. (ii) Any photographs show only certain parts of the property at the time they were taken. Any areas, measurements or distances given are approximate only. (iii) Any reference to alterations to, or use of any part of the property is not a statement that any necessary planning, building regulations or other consent has been obtained. These matters must be verified by any intending buyer/lessee. (iv) Any buyer/lessee must satisfy himself by inspection or otherwise as to the correctness of any information given.