

12,073 sq. ft. Best in Class Farringdon opportunity
Location

Bloom Clerkenwell is located in one of London's best connected and most vibrant neighbourhoods.

The impressive transport links include The Elizabeth Line, Thameslink, Circle, District and Metropolitan Lines.

Description

Bloom was completed in 2022 by HB Reavis who are renowned for delivering best in class schemes designed to stand the test of time.

The 7th floor is the penthouse level offering both excellent volume, minimal columns, fantastic natural light and wrap around terraces.

The accommodation benefits from:

- Over 12,000 sq. ft. with fantastic views over the city
- 1,200 sq. ft. fitness studio and wellness room
- 248 bike racks
- 20 showers and 204 lockers
- BREEAM Outstanding, WELL Platinum and WiredScore Platinum.
- EPC A
- Occupier lounge
- Private and communal terraces
- On-site security
- Seconds from the Elizabeth Line entrance
- Currently shell & core

Terms

Flexible sublease available from 1st September 2023.

Available

Available now



Floor	Size (sq. ft.)
7 th	12,073
Private Terrace	4,653

Costs	PSF
Passing rent	£100.00

For more information, contact:

Hector Macneal

Mobile: +44 (0) 7885 201163

hector.macneal@cushwake.com

Holly Hamer

Mobile: +44 (0) 7471 725112

holly.hamer@cushwake.com

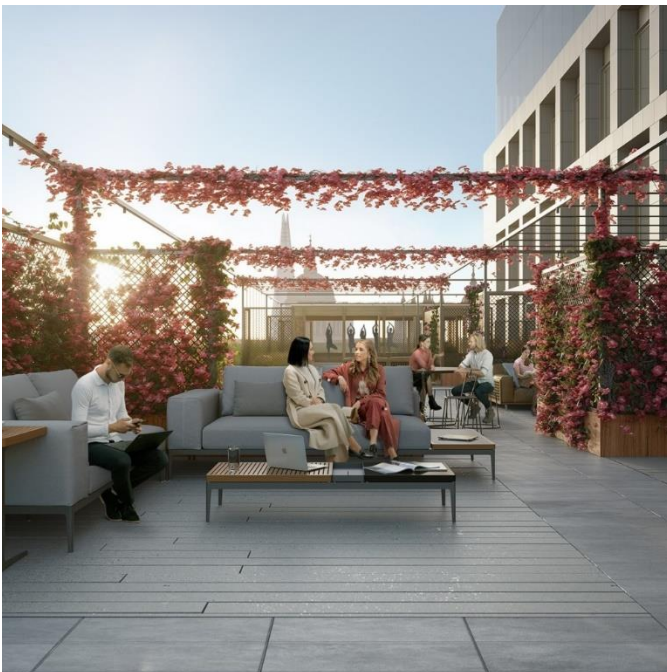
Bloom: Building Amenity



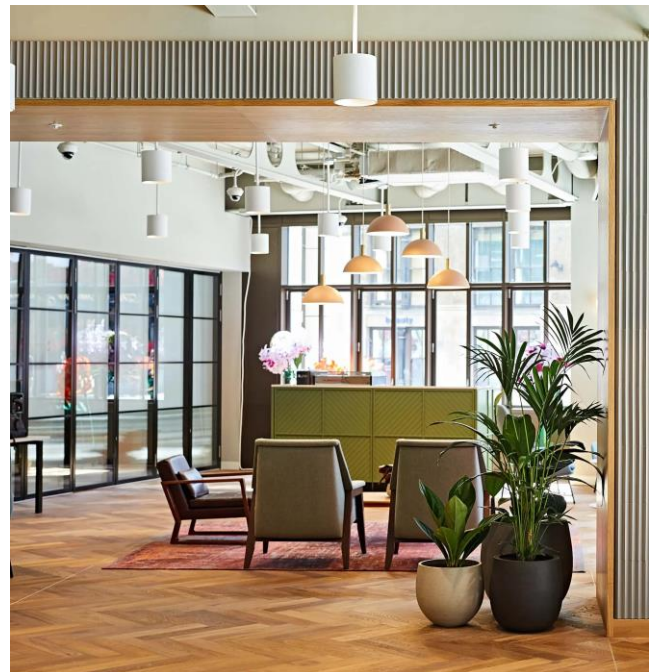
Best In Class End of Journey Facilities



Fitness Studio



Private Terraces



Bloom Lounge

Floor plan

Workspace: 12,073 sq ft

Private Terrace: 4,653 sq ft

