



HAYS GALLERIA

6 Hay's Lane



Located in the heart of London,
6 Hay's Lane is a perfectly connected,
intelligent workspace.



The Building

01

Workspace at the heart of the Capital



View of the exterior of 6 Hays Lane

View of the exterior of 6 Hays Lane

6 Hay's Lane is a perfectly connected, intelligent workspace. Sensitively restored, it possesses all the character of a historic, wharf building, but possesses vastly improved operational facilities and details.

Keeping in line with the rest of the Hay's Galleria estate, 6 Hay's Lane will deliver best-in-class offices, rich in character and nestled at the heart of a thriving, seven-day destination.



Level 1 fitted floor



Level 1 fitted floor

Building Overview



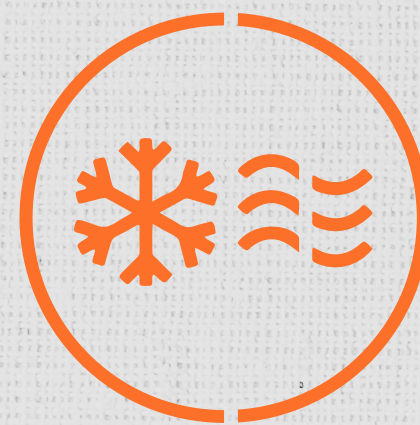
Car parking available*



200+ Bicycle spaces available*



Occupancy ratio up to 1:8



New exposed 4-Pipe fan coil air conditioning



Heritage Features



2 brand new passenger lifts



Openable windows



3m floor-to-soffit height



Fibre activated



Luxury changing facilities

Stacking Plan

05

3,340 sq ft
310 sq m

04

3,872 sq ft
359 sq m

03

3,825 sq ft
355 sq m

02

3,808 sq ft
354 sq m

01

3,790 sq ft
353 sq m

Total

18,635 sq ft
1,731 sq m

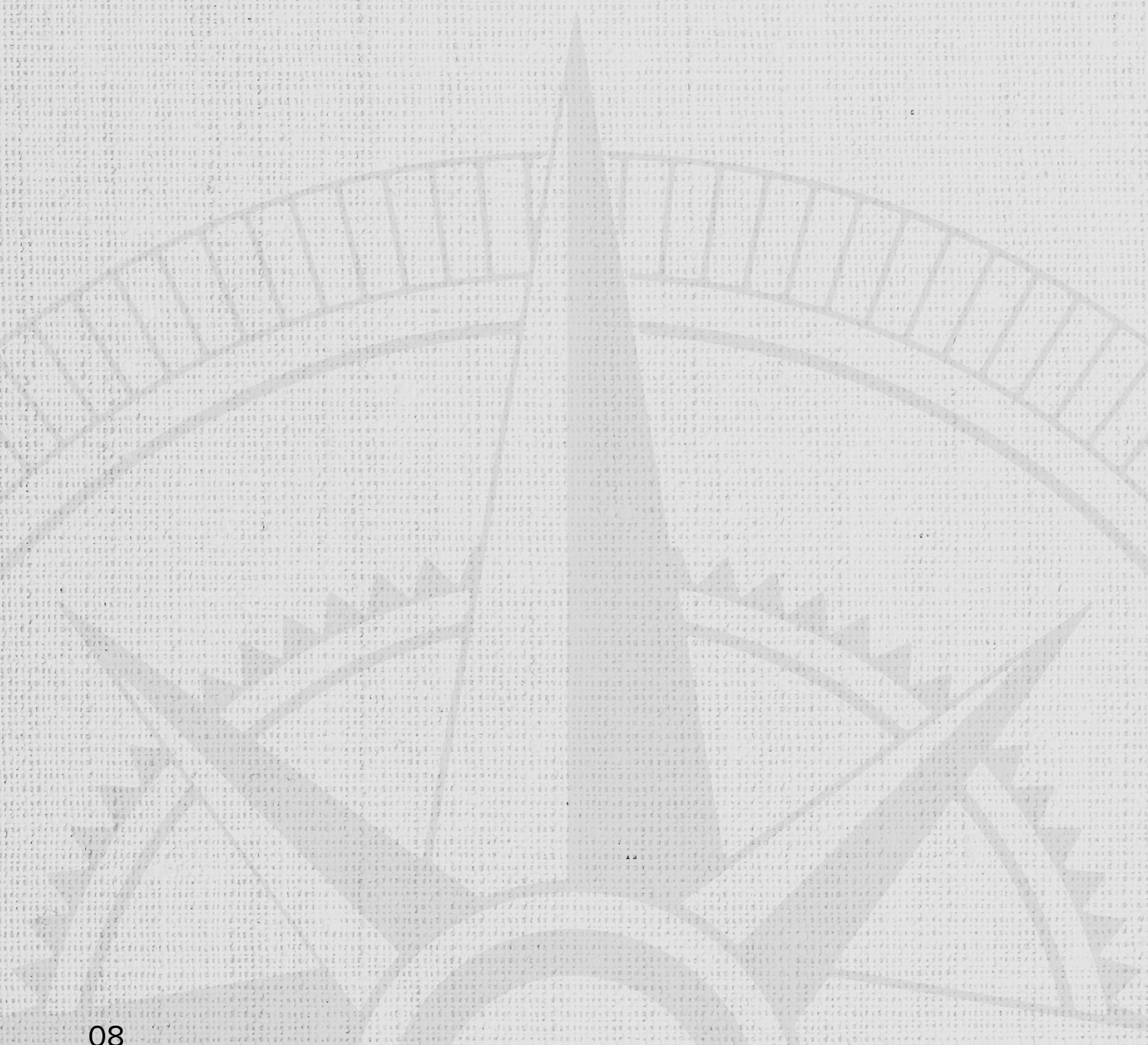


Ground Floor

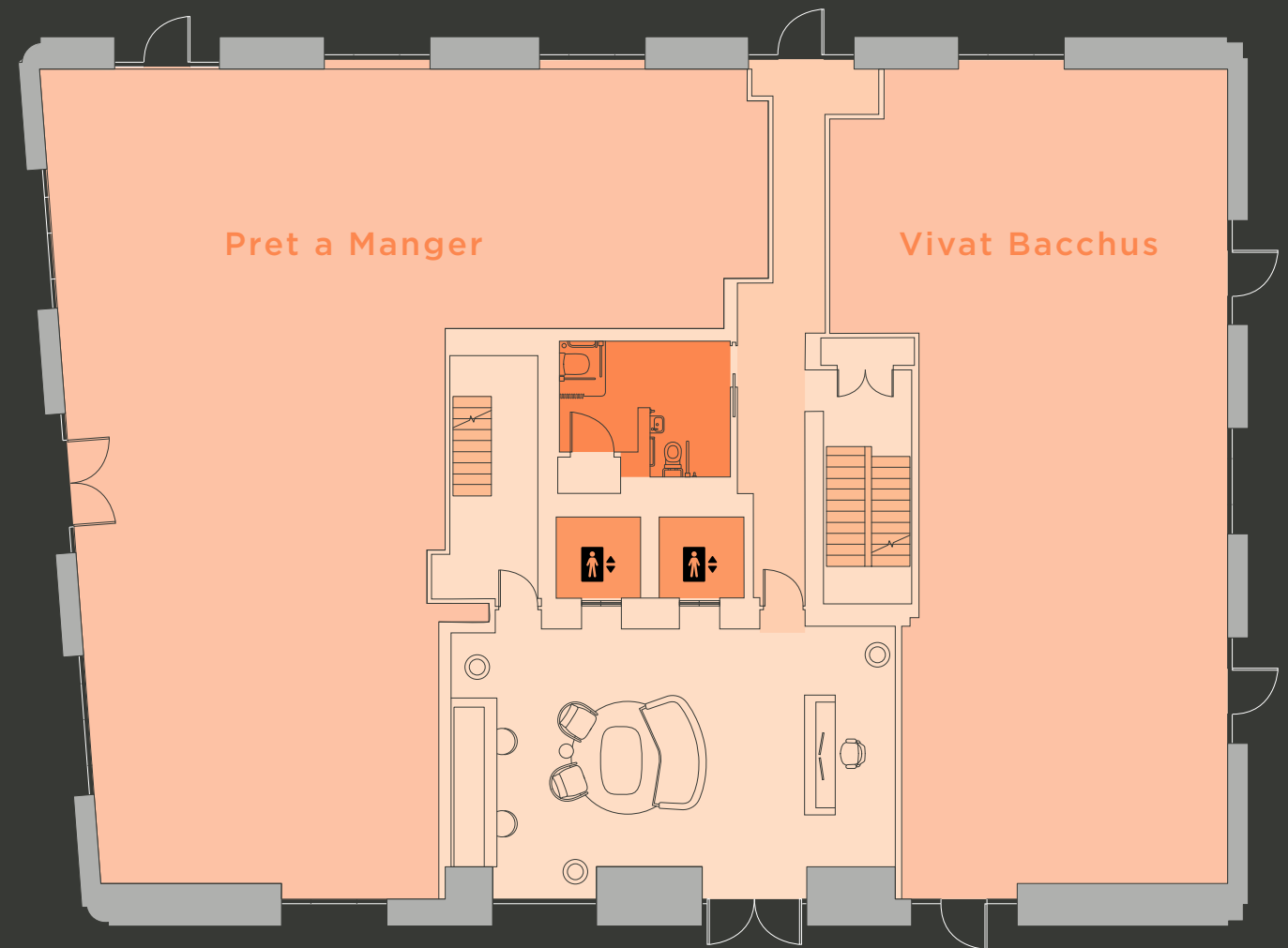
Reception



N



TOOLEY STREET



HAY'S LANE



Warm, welcoming entrance



Level One

Fitted solution

3,790 sq ft / 352 sq m



Welcome area



Kitchen

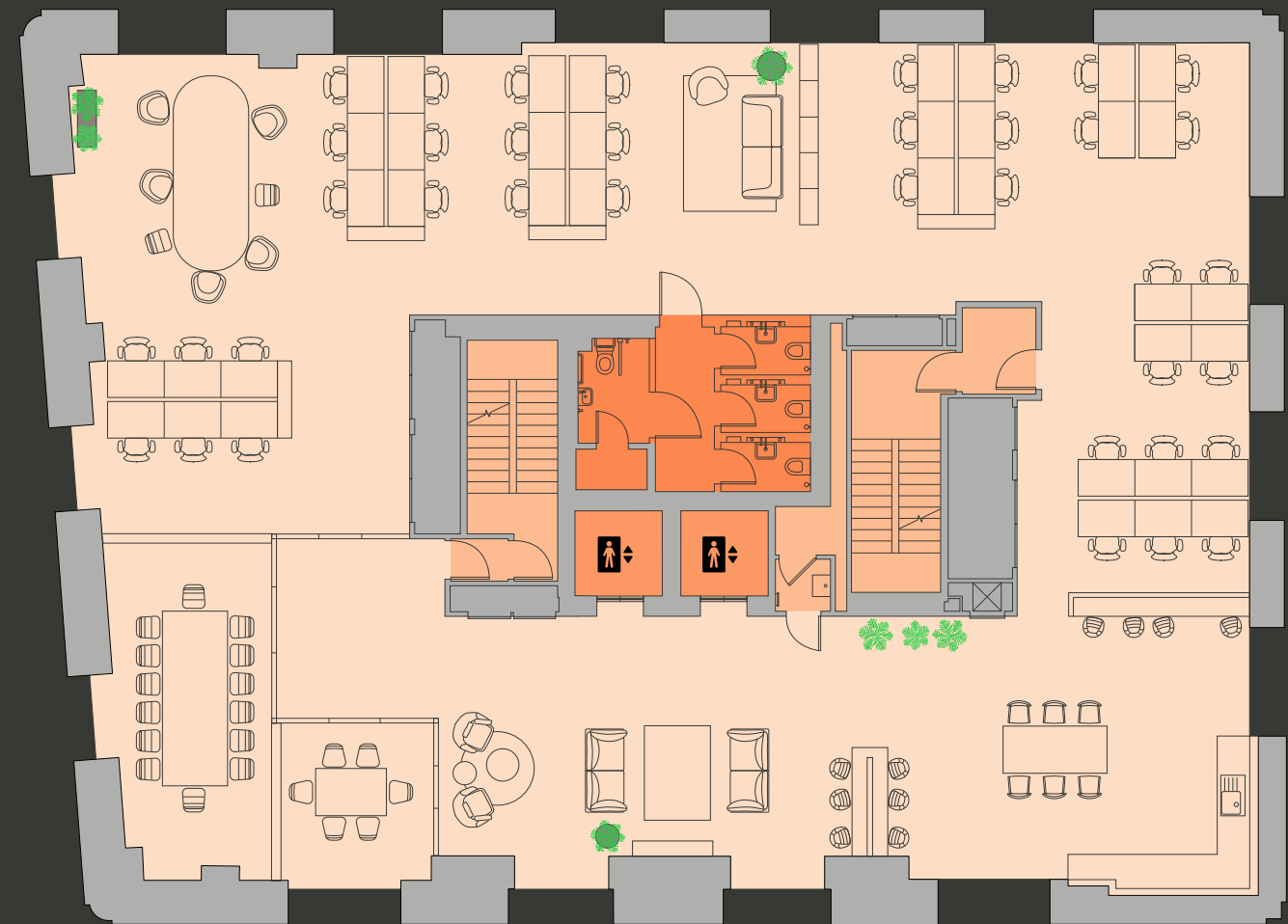


- 38 Fixed desks
- 6 Casual desks
- 6 High desks



- 14 person board room
- 6 person meeting room

TOOLEY STREET



HAY'S LANE

H

Levels Two–Five

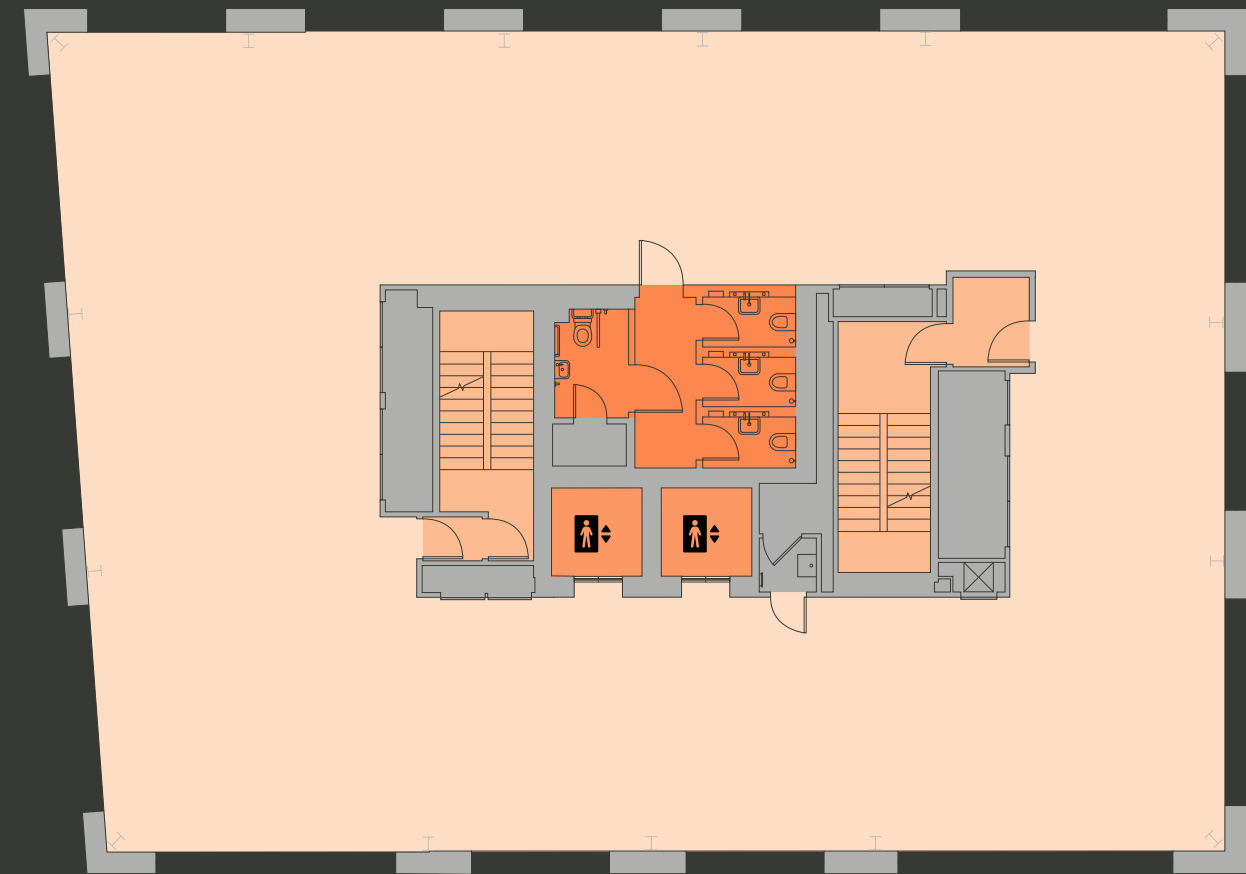
Typical Floor

3,711 sq ft / 345 sq m



N

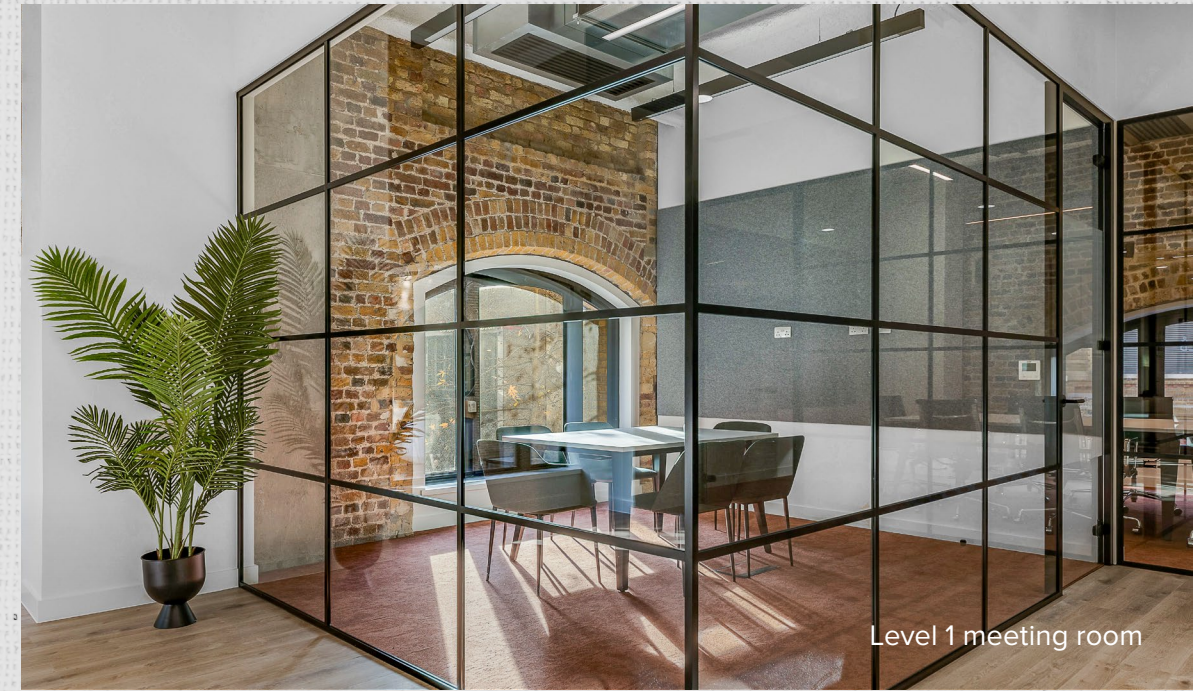
TOOLEY STREET



HAY'S LANE



Level 1 fitted space



Level 1 meeting room

Bright, expansive floorplates



Level 1 fitted space



Level 1 fitted space



Level 1 fitted space

Where heritage meets contemporary



Level 1 fitted space

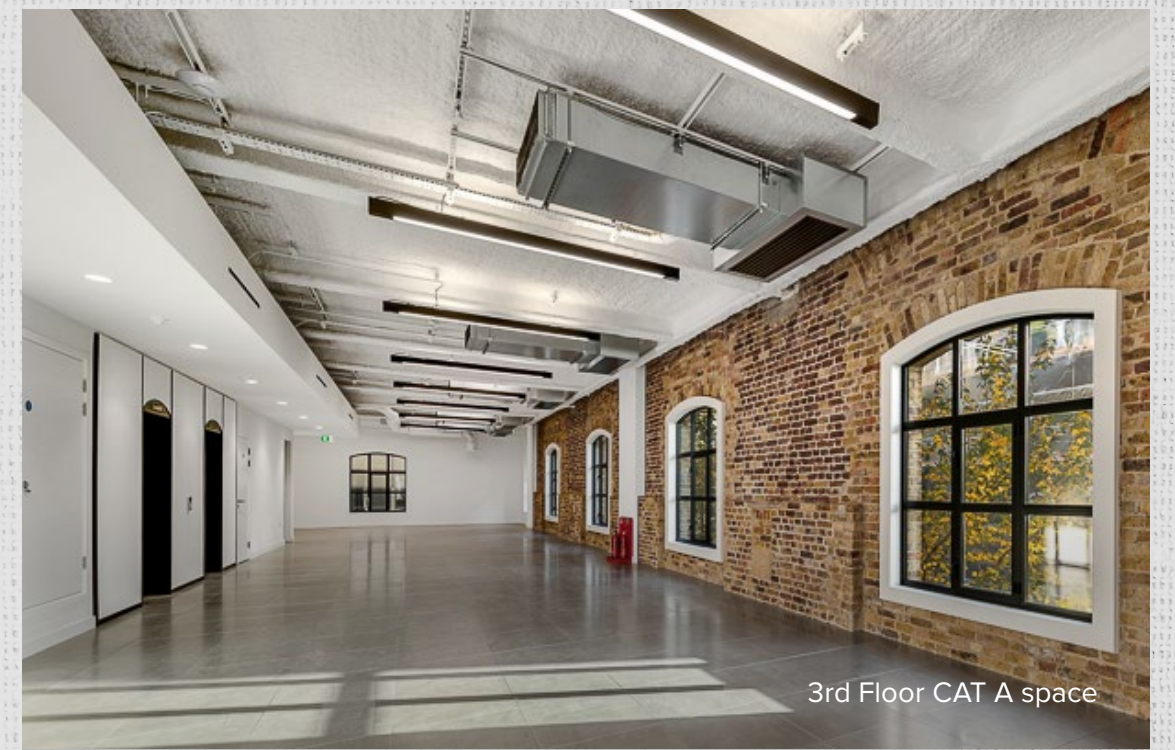
Flooded with natural light



3rd Floor CAT A space



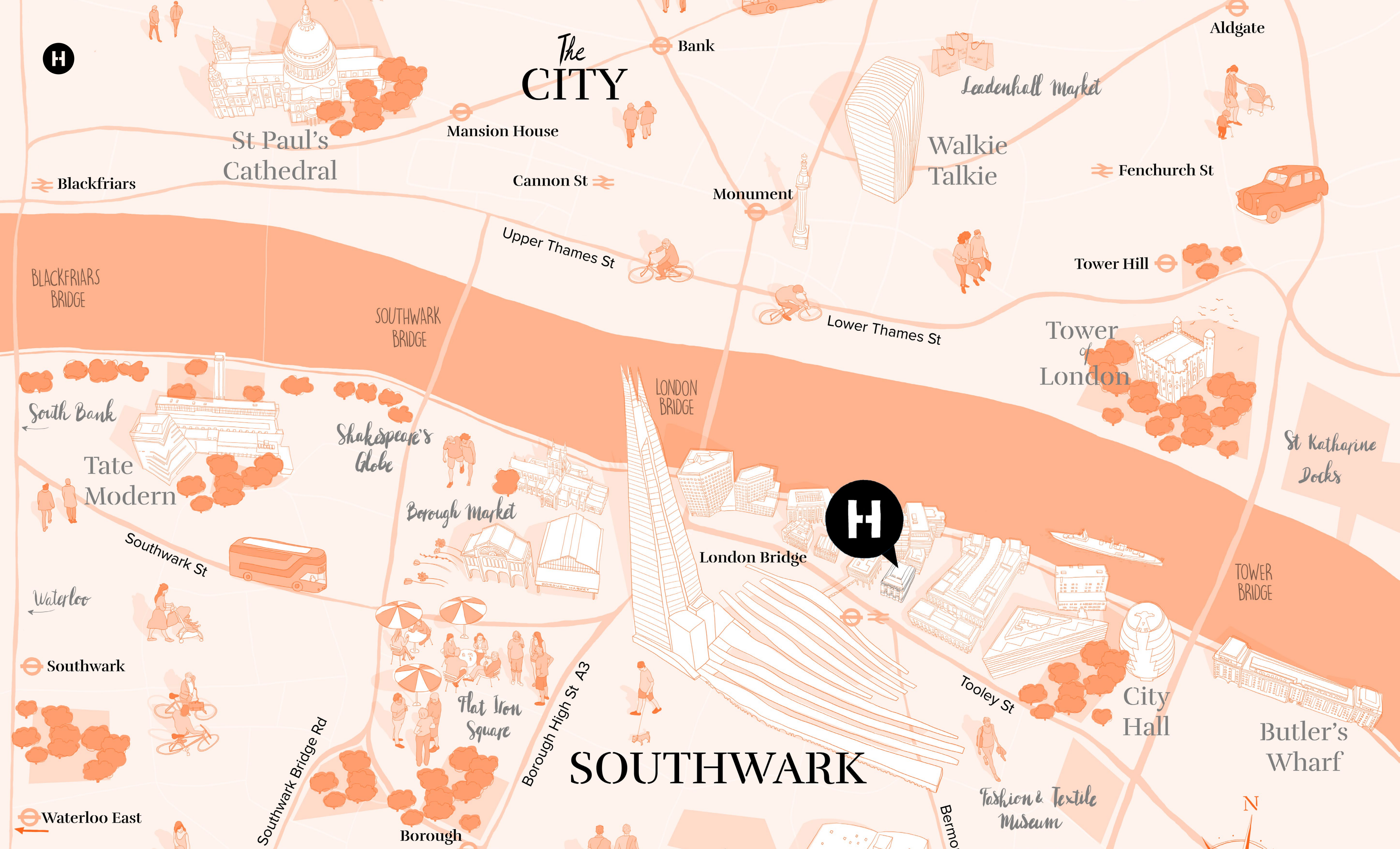
4th Floor CAT A space



3rd Floor CAT A space

Location





The CITY

St Paul's Cathedral

Mansion House

Cannon St

Monument

Walkie Talkie

Fenchurch St

Tower Hill

Tower of London

St Katharine Docks

London Bridge

City Hall

Butler's Wharf

SOUTHWARK

Shakespeare's Globe

Borough Market

Flat Iron Square

Borough

Blackfriars

BLACKFRIARS BRIDGE

SOUTHWARK BRIDGE

LONDON BRIDGE

TOWER BRIDGE

South Bank

Tate Modern

Waterloo

Southwark

Waterloo East

Southwark St

Southwark Bridge Rd

Borough High St A3

Tooley St

Bermon

Fashion & Textile Museum

N



View of The City

Riverside sunset at London Bridge City



Tower Bridge



Riverside working

Green spaces in London Bridge City



H

An exceptional waterside campus

Hay's Galleria is packed with food, drink and shopping opportunities. Fantastic on and off-site amenities give tenants a truly rare variety of choice and convenience.



View of Hay's Galleria from the River

View of the Galleria



Shopping at Hay's Galleria



View of Hay's Galleria

Hay's Lane



North entrance to Hay's Galleria



H

Steeped in History



1935
Barges moored at Hay's Wharf.



1927
Russian sailors watching gold from the Lena Gold Fields being unloaded from the S S Trotsky at Hay's Wharf. The shipment belongs to Messrs Rothschild.



1926:
Unloading ships at Hay's Wharf.

The Hay's Estate

6 Hay's Lane
18,635 SQ FT

18,635 SQ FT

Counting House
11,000 SQ FT

11,000 SQ FT

HAY'S LANE

Hay's Lane House
10,369 SQ FT

10,369 SQ FT

FULLY LEASED

Goldings House

GALLERIA

FULLY LEASED

Tea Auction House

CORPORATE RESIDENCES

Shackleton House
12,500 SQ FT

12,500 SQ FT

TOOLEY STREET

COUNTER STREET

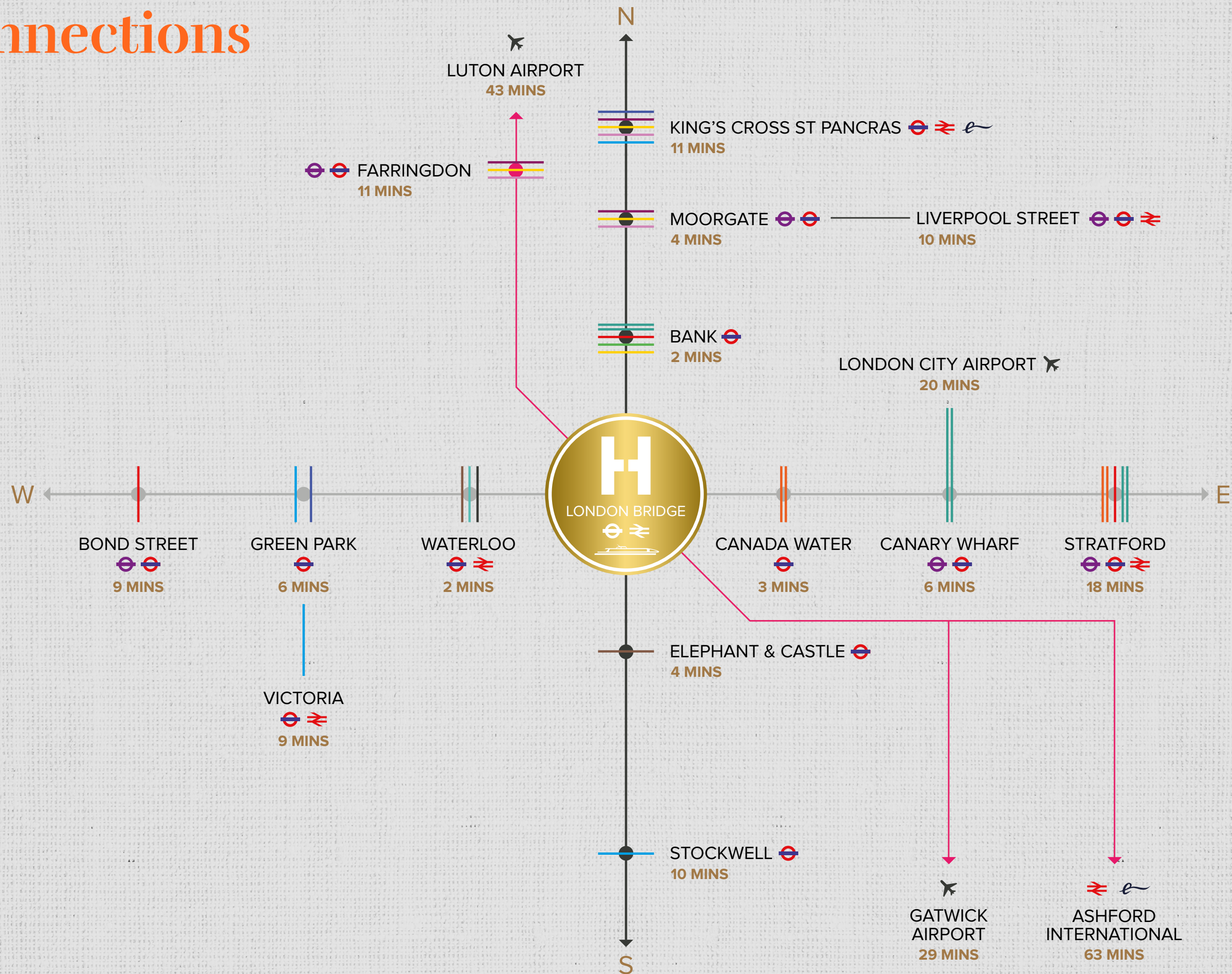
RIVER THAMES

BATTLE BRIDGE LANE

*ALL FIGURES BASED ON A TYPICAL FLOOR



Connections





Hector Macneal
+44 (0)7885 201 163
hector.macneal@cushwake.com

Holly Hamer
+44 (0)7471 725 112
holly.hamer@cushwake.com

Tom Fayers
+44 (0)7973 821 247
tom.fayers@cushwake.com

James Taylor
+44 (0)7899 843 767
james.taylor@cushwake.com

hays-galleria.com

A scheme by

The logo for St Martins, consisting of the words "ST" and "MARTINS" stacked vertically in a bold, sans-serif font, enclosed within a thin black rectangular border.

**ST
MARTINS**

Whilst the statements contained in these particulars are given in good faith and as a general guide to the property they do not form any part of an offer or contract. Neither the lessor, or any person in the employment of Cushman & Wakefield has any authority to make or give any representation or warranty whatsoever in relation to this property. Interested parties must satisfy themselves by inspection or otherwise as to the correctness of these particulars. February 2024.



HAYS GALLERIA

HAYS-GALLERIA.COM

