

Belsize Road, London, NW6

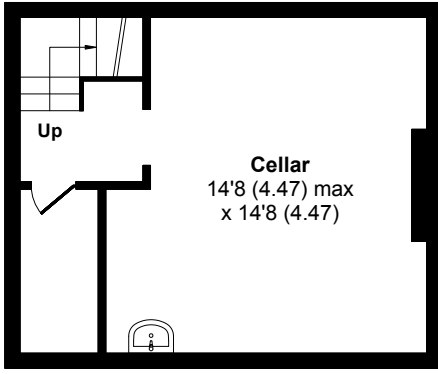
Approximate Area = 2244 sq ft / 208.4 sq m

Limited Use Area(s) = 44 sq ft / 4 sq m

Outbuilding = 88 sq ft / 8.1 sq m

Total = 2376 sq ft / 220.5 sq m

For identification only - Not to scale

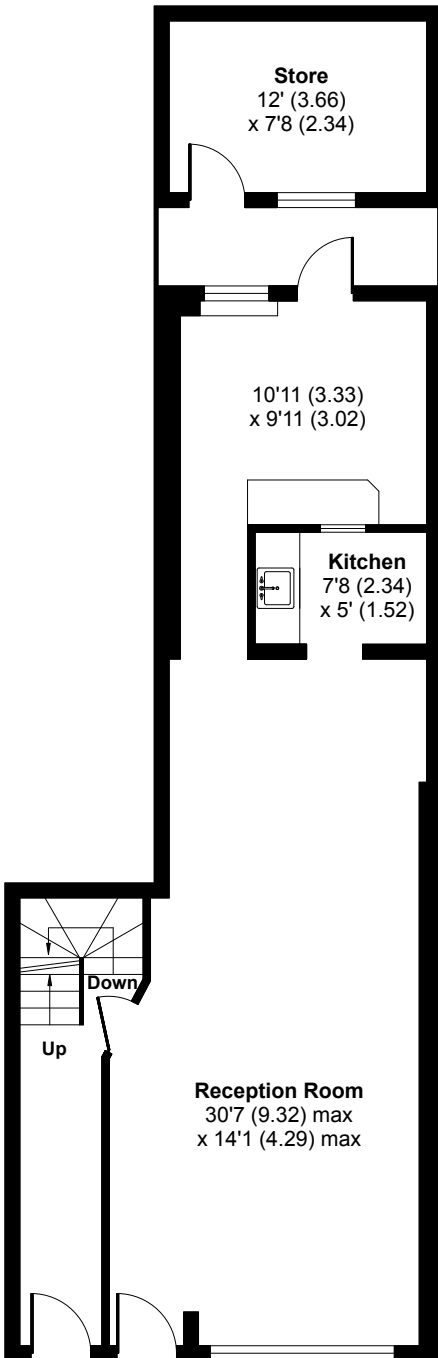


BASEMENT FLOOR
abt 273 SQFT (25.3 SQMT)

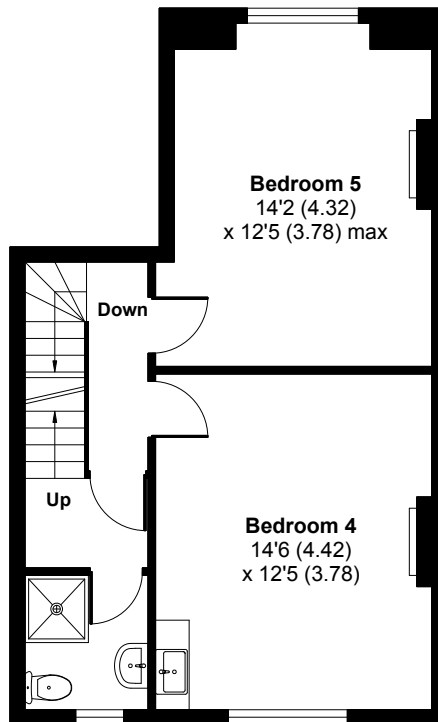


Denotes restricted head height

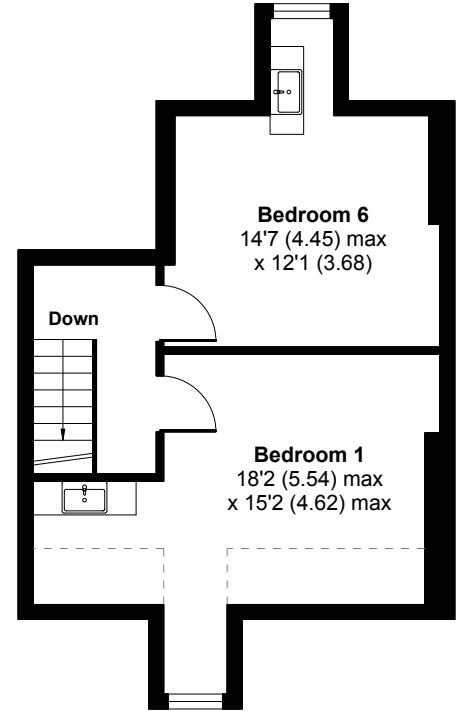
OUTBUILDING
abt 88 SQFT (8.1 SQMT)



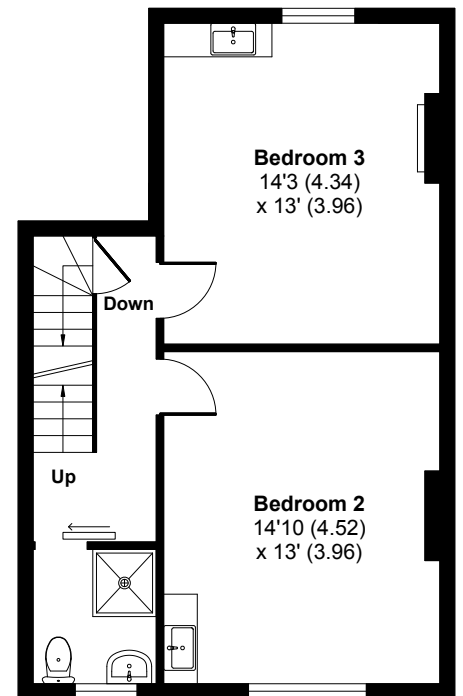
GROUND FLOOR
abt 670 SQFT (62.2 SQMT)



FIRST FLOOR
abt 486 SQFT (45.1 SQMT)



THIRD FLOOR
abt 378 SQFT (35.1 SQMT)



SECOND FLOOR
abt 481 SQFT (44.6 SQMT)

