

GENERAL NOTES



ROLLER SHUTTER DOOR

A 10.02.12 ISSUED FOR INFORMATION.		PM
Rev	Iss	Description

ARTHUR MCKAY
ELECTRICAL | MECHANICAL | FIRE NETWORKS
BUILDING SUPPORT SERVICES GROUP

Units B6 & 7,
Poplar Business Park,
10, Preston Road,
London E14 9RL.
Tel : 0207 531 7280.
Fax : 0207 531 7281.
www.arthur-mckay.com.

Edinburgh, London & Glasgow.

GENESIS HOUSING ASSOCIATION

192 WILLESDEN HIGH RD LONDON

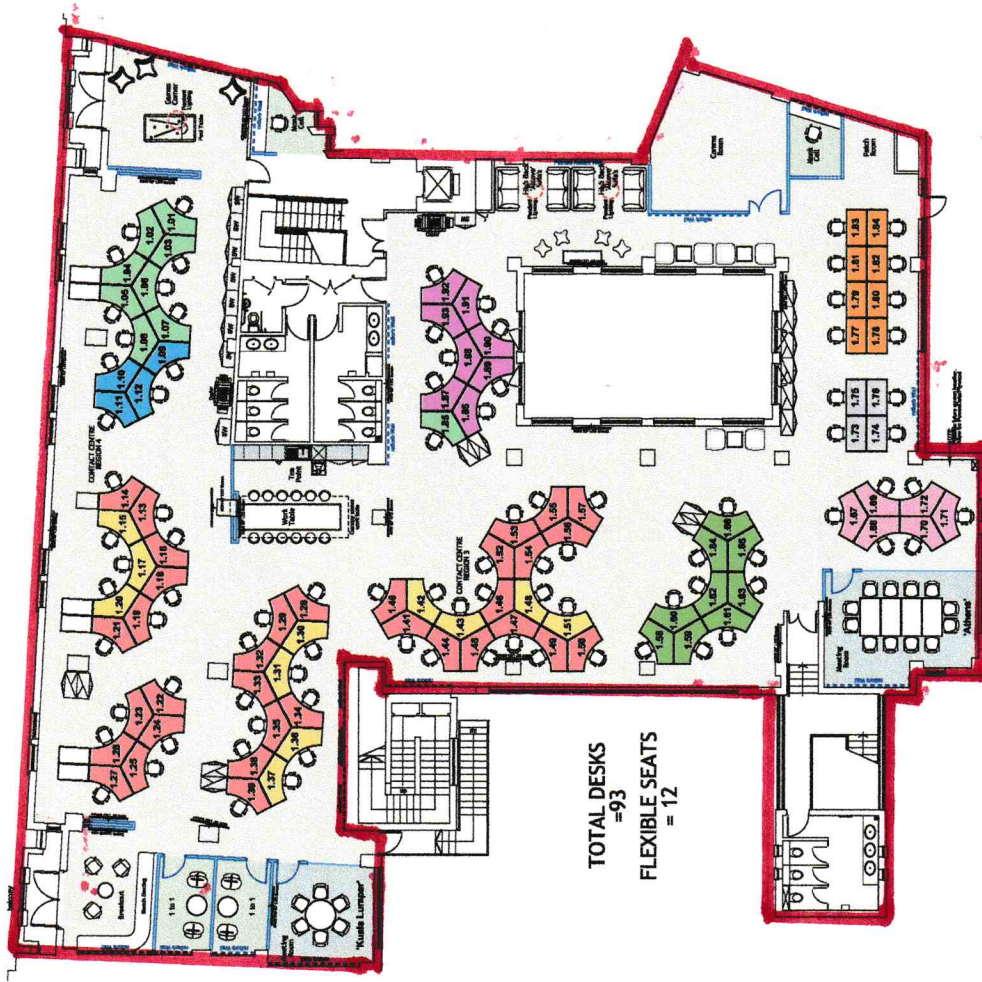
LIGHTING & EMERGENCY LIGHTING LAYOUT BASEMENT

INFORMATION

Drawn By	PM	Date	FEB 14	Project No	EL0092
Checked By	CK	Scale	1:100		

Drawing Number: **EL0092 60 BS 100**

A



Schedule of Accommodation

GPS (Resource Schedulers)	= 11
Contact Centre	= 42
HR&E Team	= 9
Temporary Housing	= 4
Health Media Team	= 8
Business Support	= 8
Management Team	= 4
Admin Team	= 6
Hot Desks	= 9
Meeting Room (12 Person)	= 1
Meeting Room (4 Person)	= 1
1 to 1 Rooms	= 2
Mark Cells	= 2

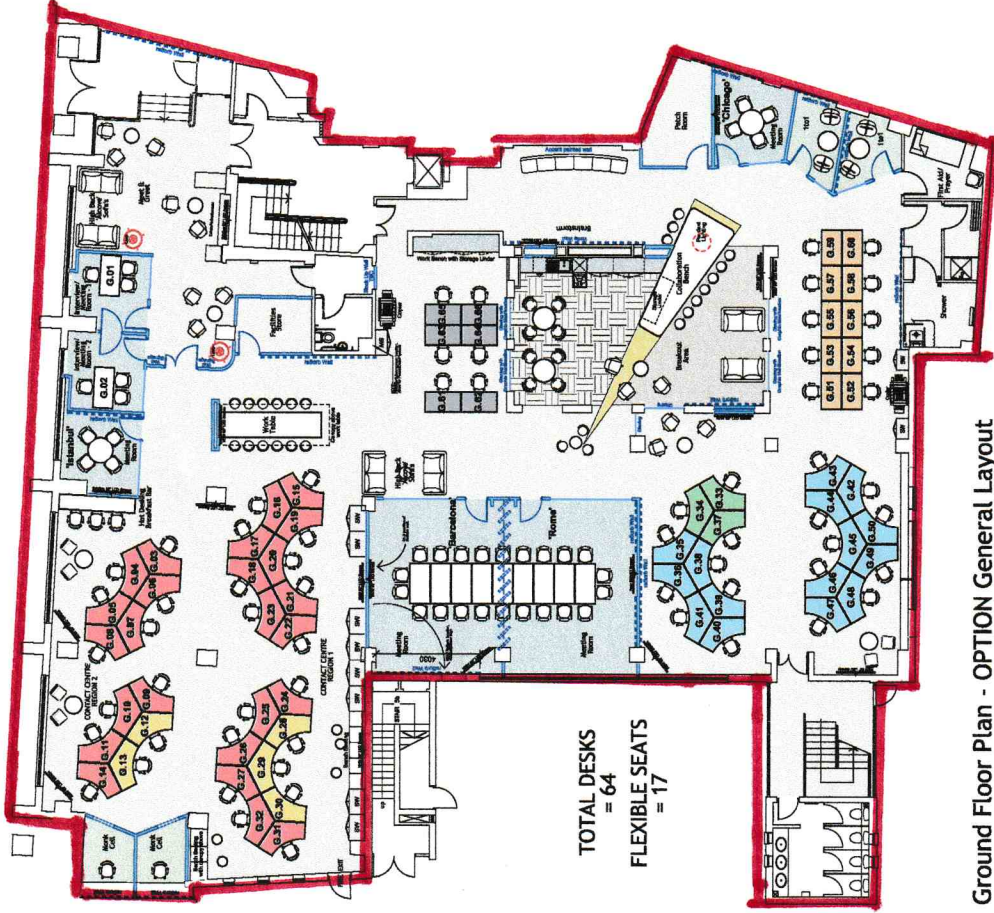
TOTAL DESKS
= 93
FLEXIBLE SEATS
= 12

First Floor Plan - OPTION General Layout

PARTITION & FURNITURE KEY

- Existing partition
- Existing Building Shell/Phase Build Wall
- Existing Partition/Doors to be Demolished
- New 75mm Stud Partition
- New 75mm 1/2 Hour Fire Rated Partition
- New 100mm Acoustic Steel Partition
- New 100mm 1 Hour Fire Rated Partition
- New 100mm Slab to Slab Partitions
- New Blom Glassing
- Existing Doors
- New Doors
- Demolish 'Velux Panel'
- VP
- (288) Door Reference Number
- Low Level Storage Unit
- Medium Level Storage Unit
- High Level Storage Unit
- Storage Wall
- Shelving
- Workbench
- Office Desk Chair
- Office Desk

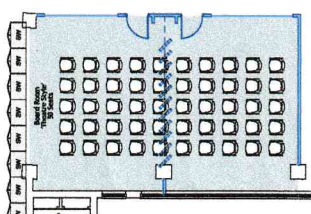




Schedule of Accommodation

GPS (Resource Schedulers)	= 5
Contract Management	= 10
Contract Centre	= 25
KIER	= 18
FM/I.T. Team	= 4
Hot Desks	= 3
Meeting Room (22 Person)	= 1
Meeting Room (4 Person)	= 2
Interview Rooms	= 2
1 to 1 Rooms	= 2
Monk Cells	= 2

TOTAL DESKS = 64
FLEXIBLE SEATS = 17



Boardroom Classroom Style

Ground Floor Plan - OPTION General Layout

PARTITION & FURNITURE KEY

- Existing partition
- Existing Building Shell/Frame Build Wall
- Existing Partition/Dorm to be Demolished
- New 75mm Slab Partition
- New 75mm 1/2 Hour Fire Rated Partition
- New 100mm Acoustic Stud Partition
- New 100mm 1 Hour Fire Rated Partition
- New 100mm Slab to Slab Partition
- New Sliton Glazing
- Existing Doors
- New Doors
- VP
- Door Reference Number
- Low Level Storage Unit
- Medium Level Storage Unit
- High Level Storage Unit
- Storage Wall
- Shelving
- Workbench
- Office Desk Chair
- Office Desk