

Rev	Revision	By	Date

**K NIGHT ARCHITECTURAL DESIGN**

K.A.D. Ltd.  
First Floor Unit 7  
The Quartermack  
Port Solent  
PO6 4TP  
T: 01489 660194  
E: admin@k-a-d.co.uk  
W: www.k-a-d.co.uk

Client  
**KILN ACRE PARTNERSHIP**

---

Project  
**1 KILN ACRE BUSINESS PARK  
WICKHAM ROAD, FAREHAM**

---

Drawing  
**LEASE PLAN**

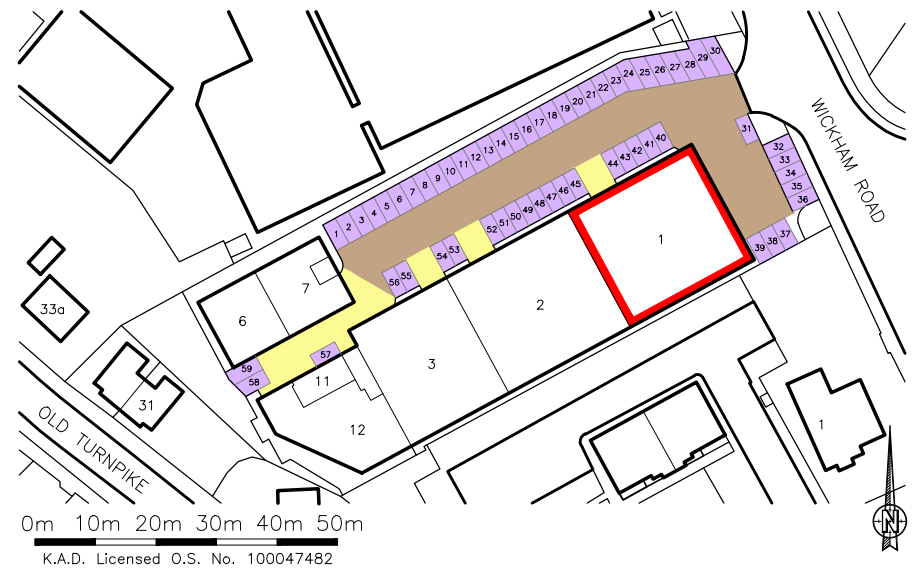
---

Scale <b>1:200@A4</b>	Date <b>JAN 2024</b>
--------------------------	-------------------------

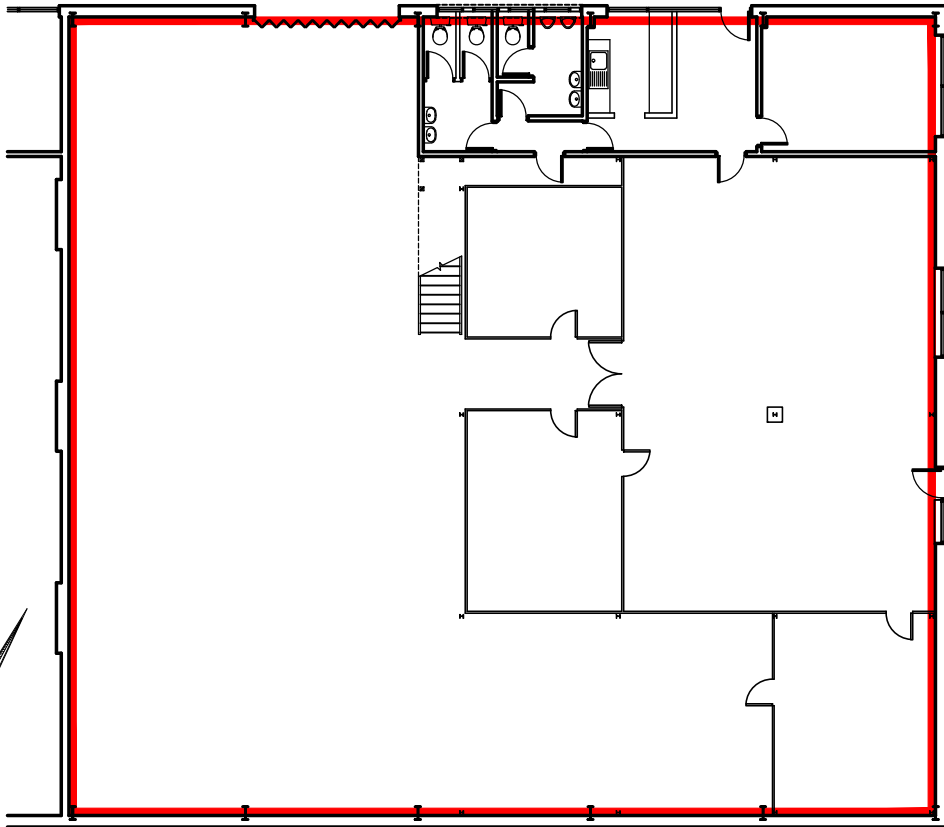
Project no.	Sequential	Bldg/Floor	Detail	Rev
KAD	01	A	SK1	B

- Road Access
- Parking
- No Parking

LOCATION PLAN  
1:1250



GROUND FLOOR  
479.90sqm / 5165.60sqft



FIRST FLOOR (MEZ)  
268.2sqm / 2885.4sqft

