



TO LET

Industrial / Warehouse Units

HAYDOCK INDUSTRIAL ESTATE

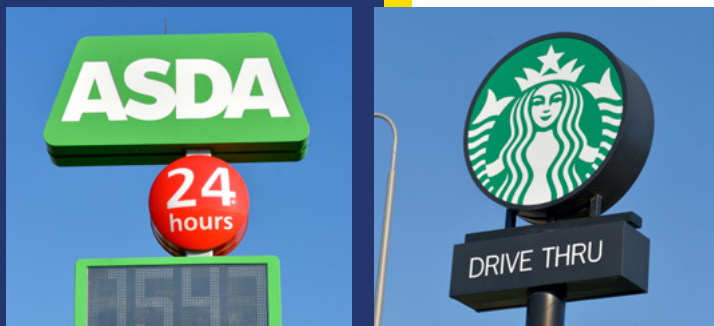
Haydock Lane,
Haydock
WA11 9XQ

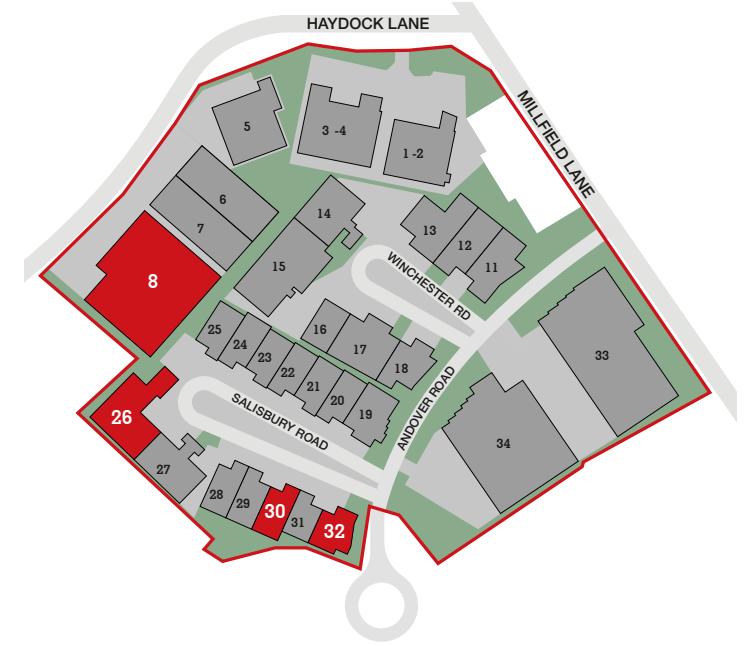
NEWLY REFURBISHED
UNITS FROM
3,654 - 27,656 SQ FT

LOCATION

Haydock Industrial Estate is strategically located within the heart of the Haydock Industrial area and is accessible via the A580 East Lancashire Road which is within 1 mile of Junction 23 of the M6.

Haydock is a recognised location for distribution facilities in the North West and neighbouring occupiers include Sainsbury's, Booker Belmont, Costco, Amazon and Kelloggs.





SPECIFICATION

- All units are newly refurbished
- Steel portal frame construction with part brick and metal clad elevations
- Minimum height to underneath eaves of 4.9m
- External shared / private service yards
- New insulated roofs for some units
- Mixture of allocated and common car parking

ACCOMMODATION

Unit	Area (Sq Ft)	Area (Sq M)
8	27,656	2,570
26	9,178	852
30	3,654	339
32	3,961	368



FURTHER INFORMATION

EPC

Available on request from the agents.

SERVICE CHARGE

A service charge will be levied for the maintenance of the common areas of the estate.

BUSINESS RATES

Tenants will be responsible for payment of business rates direct to the Local Authority. For further information contact St Helens Council.

CONTACT

For further information or to arrange a viewing, please contact one of the retained letting agents.

Henry Farr
henry.farr@cbre.com

Archie Burrows
archie.burrows@cbre.com

Alex Perratt
alex@b8re.com

Thomas Marriott
thomas@b8re.com

Max Seed
max@daviesharrison.com

Rick Davies
rick@daviesharrison.com



Misrepresentation Act 1967. These particulars are issued without any responsibility on the part of the agent and are not to be construed as containing any representation or fact upon which any person is entitled to rely. Neither the agent nor any person in their employ has any authority to make or give any representation or warranty whatsoever in relation to the property. November 2023. RB&Co 0161 833 0555. www.richardbarber.co.uk

