

**CORINTHIAN
HOUSE**

CORINTHIAN HOUSE

CROYDON | CRO 2BX

FLEXIBLE SPACE AVAILABLE ACROSS 10 FLOORS



WORKSPACE®

FIRST CLASS FEATURES



Providing an energy-efficient and comfortable environment, Corinthian House offers a host of premium building features:



**HIGH
QUALITY
KITCHENETTES**



**BOOKABLE
MEETING
ROOMS**



**ONSITE
MANAGER**



**SUPERB
NATURAL
LIGHT**



**OPENABLE
WINDOWS**



**SHOWER
ROOM**



**EPC
RATING B**



**ON-SITE
PARKING**



**13-PERSON
LIFTS**

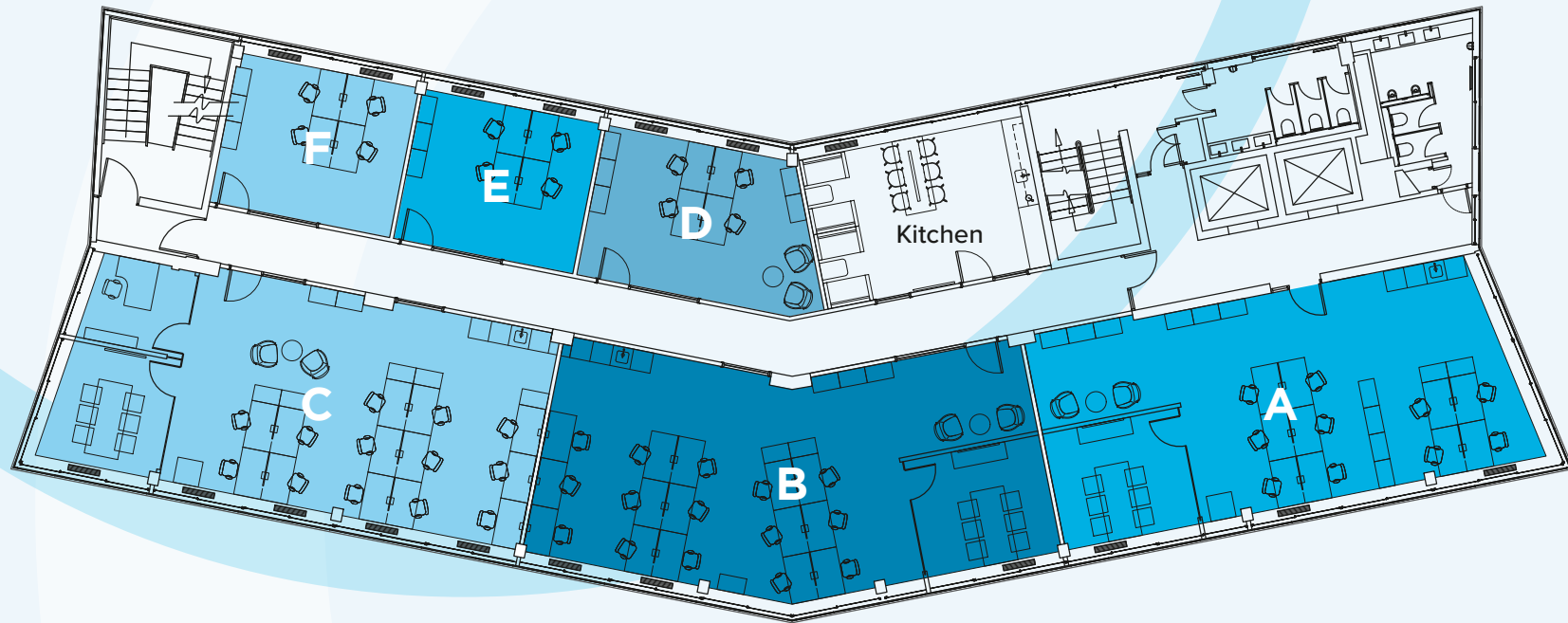


**LED
LIGHTING**



**NEW VRF AIR
CONDITIONING**

SMALLER UNIT OPTIONS



INDICATIVE AREAS

Suite A - 1,002 sq ft

Suite B - 1,075 sq ft

Suite C - 1,030 sq ft

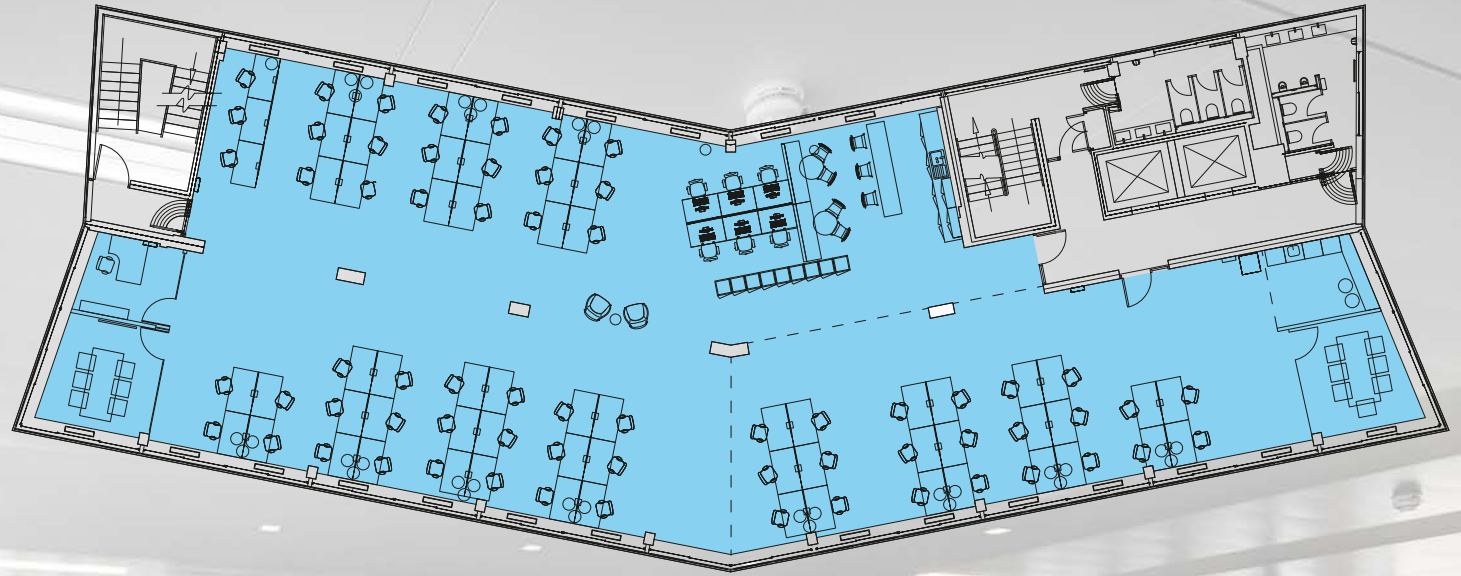
Suite D - 332 sq ft

Suite E - 276 sq ft

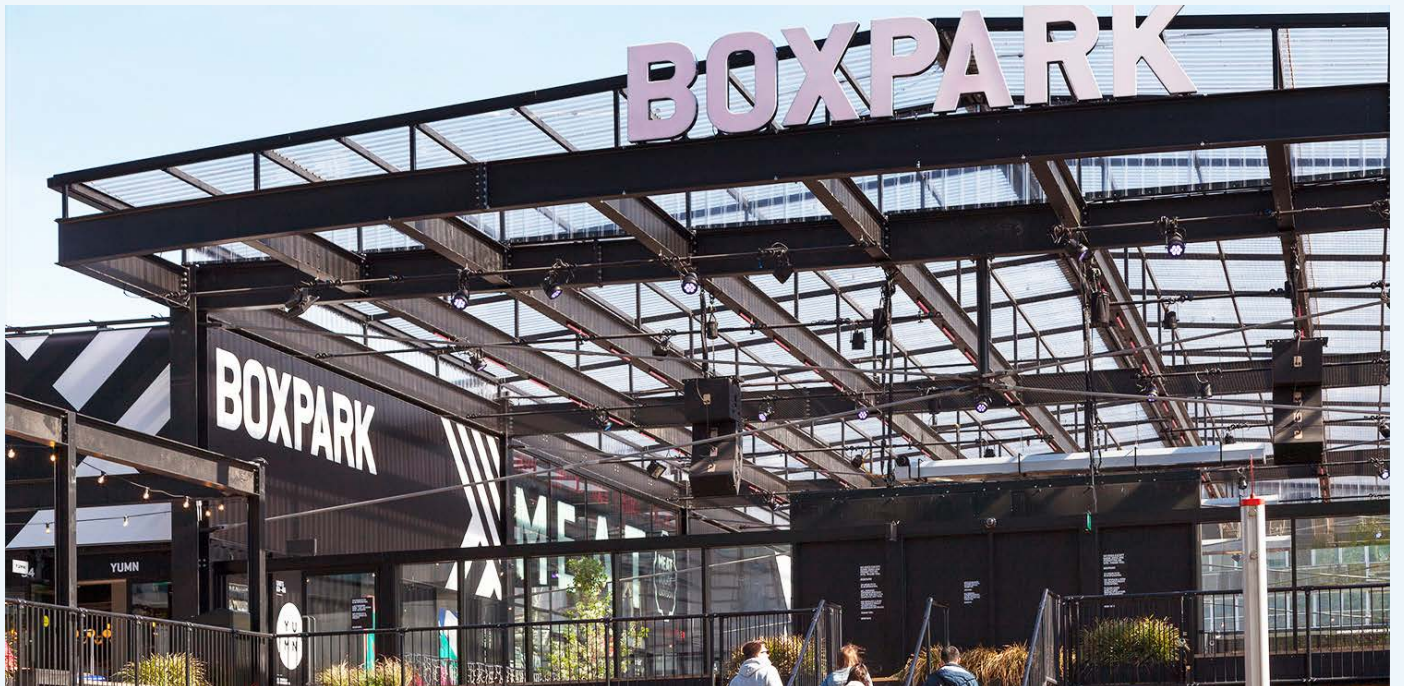
Suite F - 276 sq ft

INDICATIVE AREAS

1,500 sq ft, 3,500 sq ft or
4,900 sq ft



LARGER
UNIT OPTIONS



SPACE TO CONNECT

**10
MILES**

**DRIVE TO
THE M25 J7**

**2
MINS**

**WALK TO EAST
CROYDON
STATION**

**16
MINS**

**DIRECT TRAIN TO
LONDON VICTORIA
AND LONDON
BRIDGE**

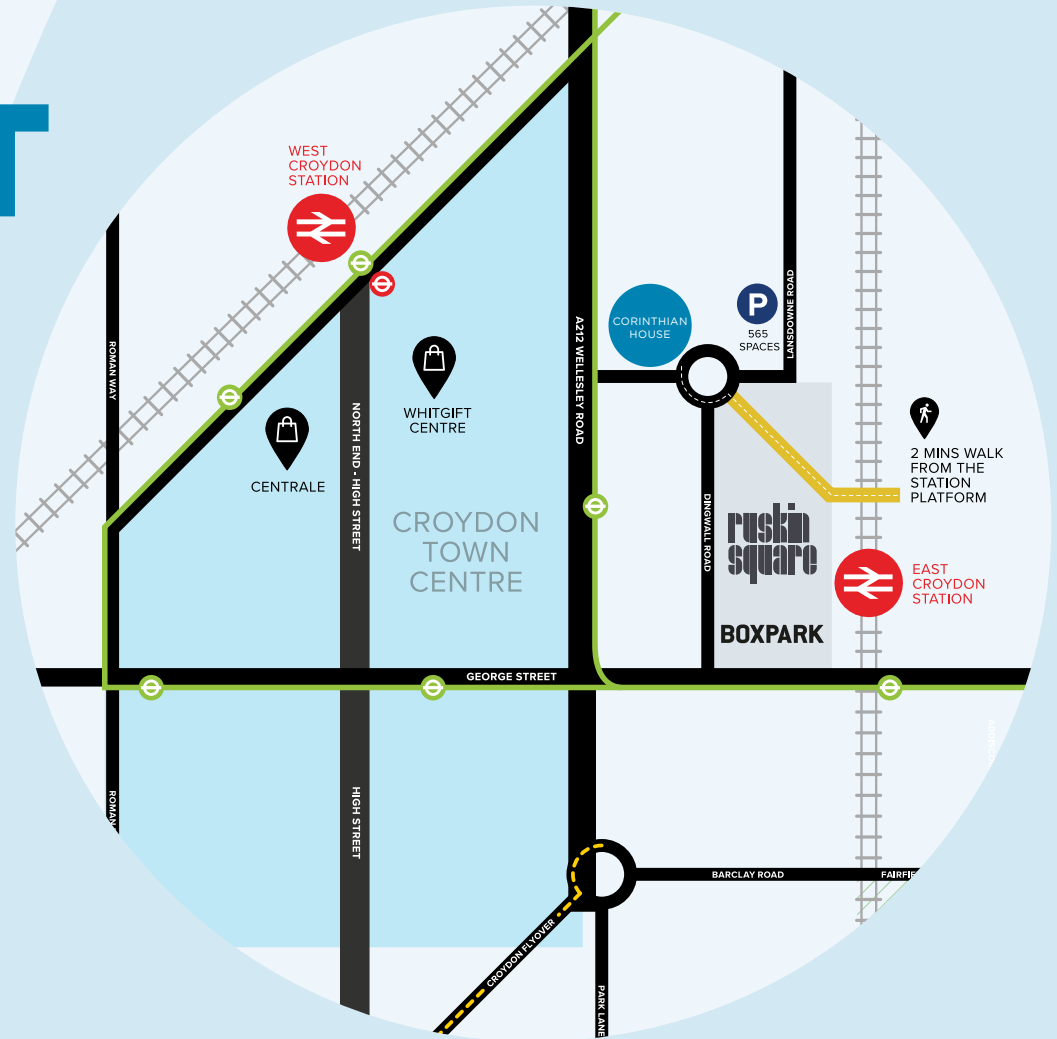
**24
MILLION**

**PASSENGERS USE
EAST CROYDON
STATION PER YEAR**

**29
MILLION**

**PASSENGERS USE
THE CROYDON
TRAMS EACH YEAR**

Be on the East Croydon train station platform, within 2 minutes. Access to London within 16 minutes thereafter.



- TRAM ROUTE
- TRAIN STATION
- BUS STATION
- TRAM STOP
- CAR PARK
- BUS STATION
- NEW FOOTPATH

Corinthian House has a thriving community and is home to a diverse mix of businesses in sectors such as finance, insurance, commodities and real estate.

CONTACT

AGENTS



DAMIAN LAMBOURN
T: 07796 953 360
E: dl@lcprop.com



JAMES GRIFFITHS
T: 07867 232653
E: jgriffiths@shw.co.uk

THOMAS TARN
T: 07943 579296
E: ttarn@shw.co.uk



WORKSPACE[®]

Home to London's brightest businesses

Workspace provides London commercial properties designed to support entrepreneurs and small businesses, tailored for individual business needs. As the leading commercial property company in London, Workspace owns more than 3.7 million square feet of office and studio space, providing homes for over 3,000 businesses in the capital.

