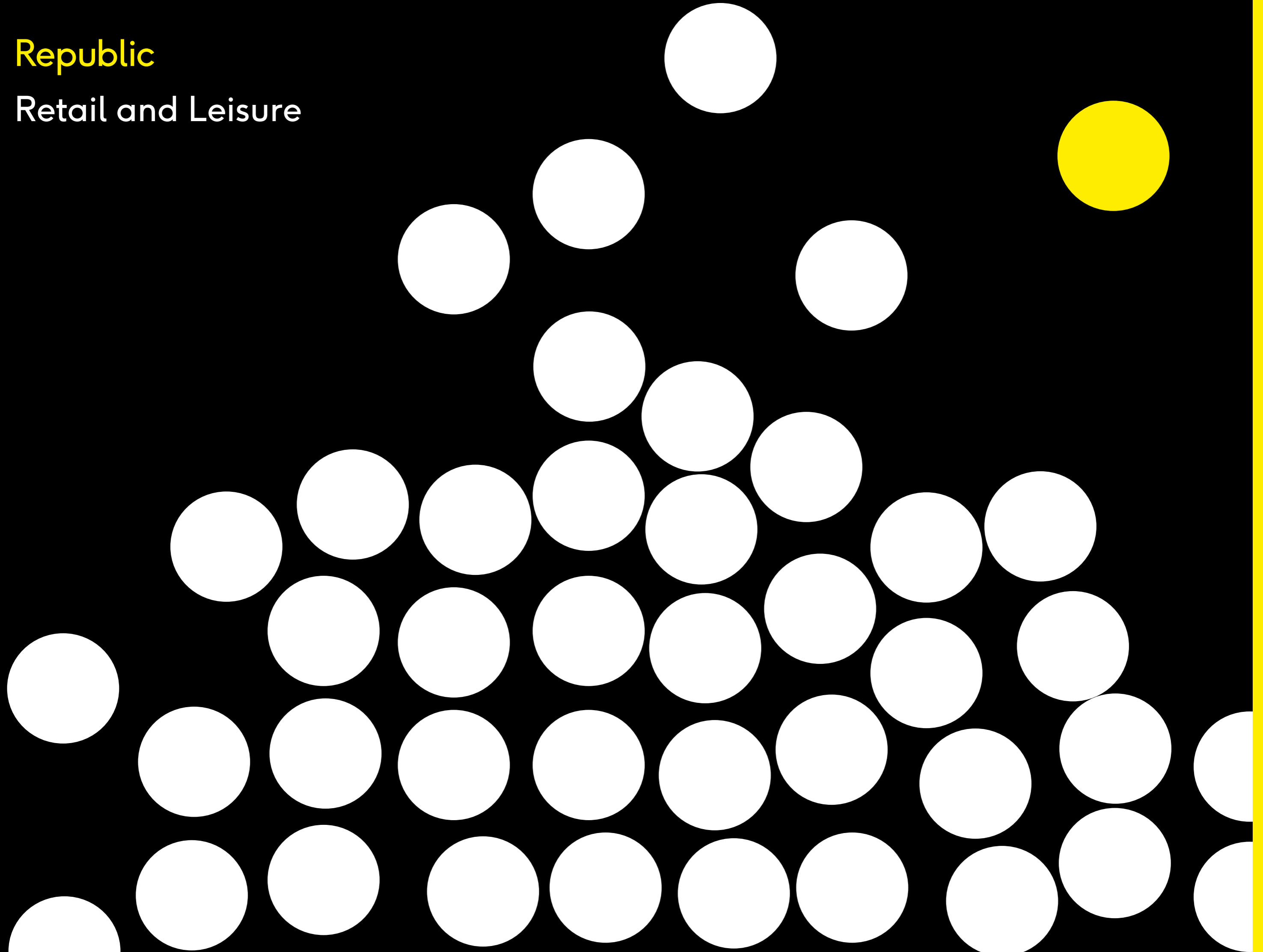


Republic

Retail and Leisure





Republic





## We are Republic

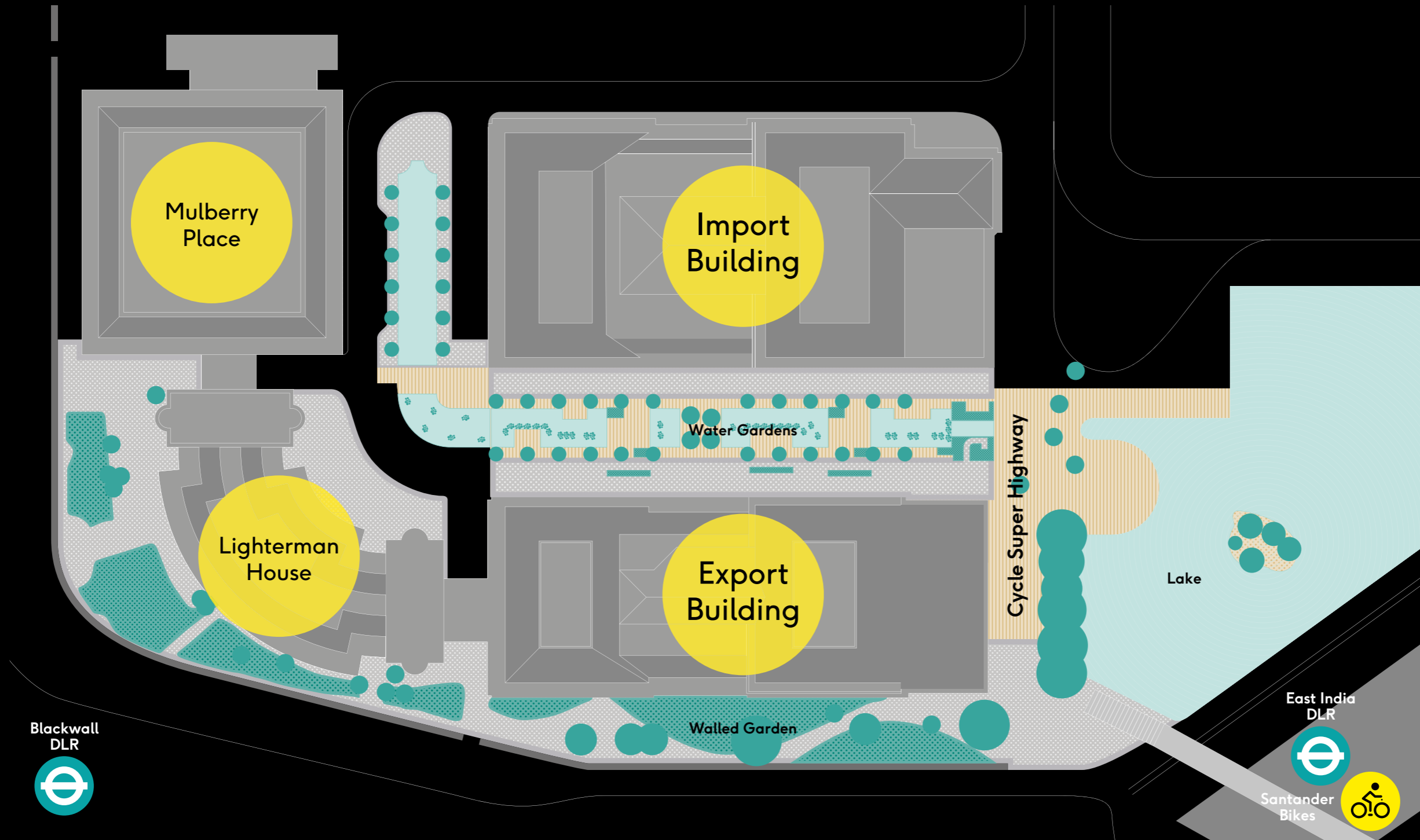
A 720,000 sq ft contemporary office campus in East London – a state of independence for an independent state of mind.

Republic offers 43,000 sq ft of retail and leisure space, centred around a stunning water garden and public realm.

## Masterplan

Import Building:	281,331 sq ft
Export Building:	232,480 sq ft
Lighterman House:	64,983 sq ft
Mulberry Place:	142,375 sq ft
<b>Total</b>	<b>721,169 sq ft</b>

Plan not to scale.  
For indicative purposes only.



Blackwall  
DLR



East India  
DLR



Santander  
Bikes

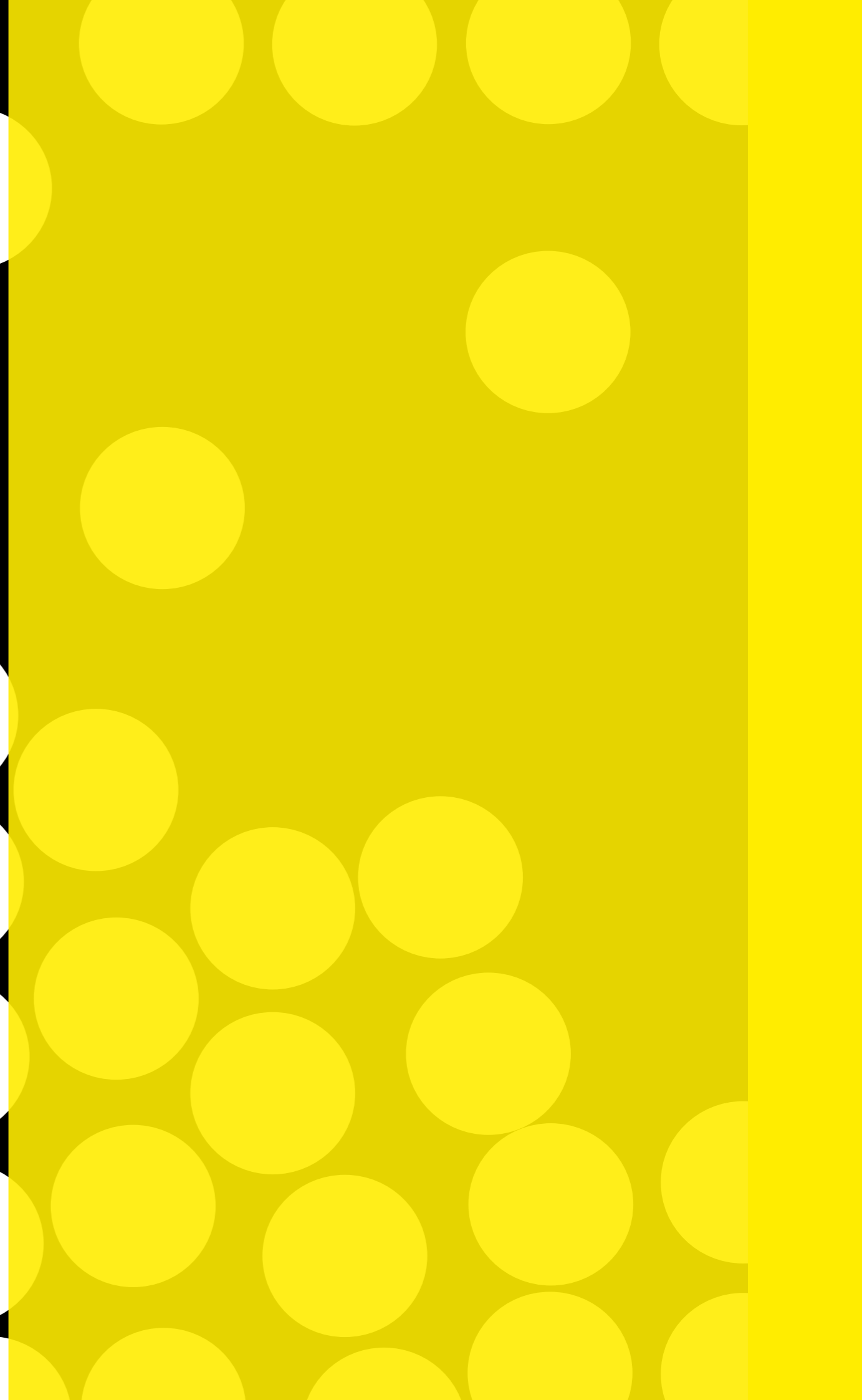
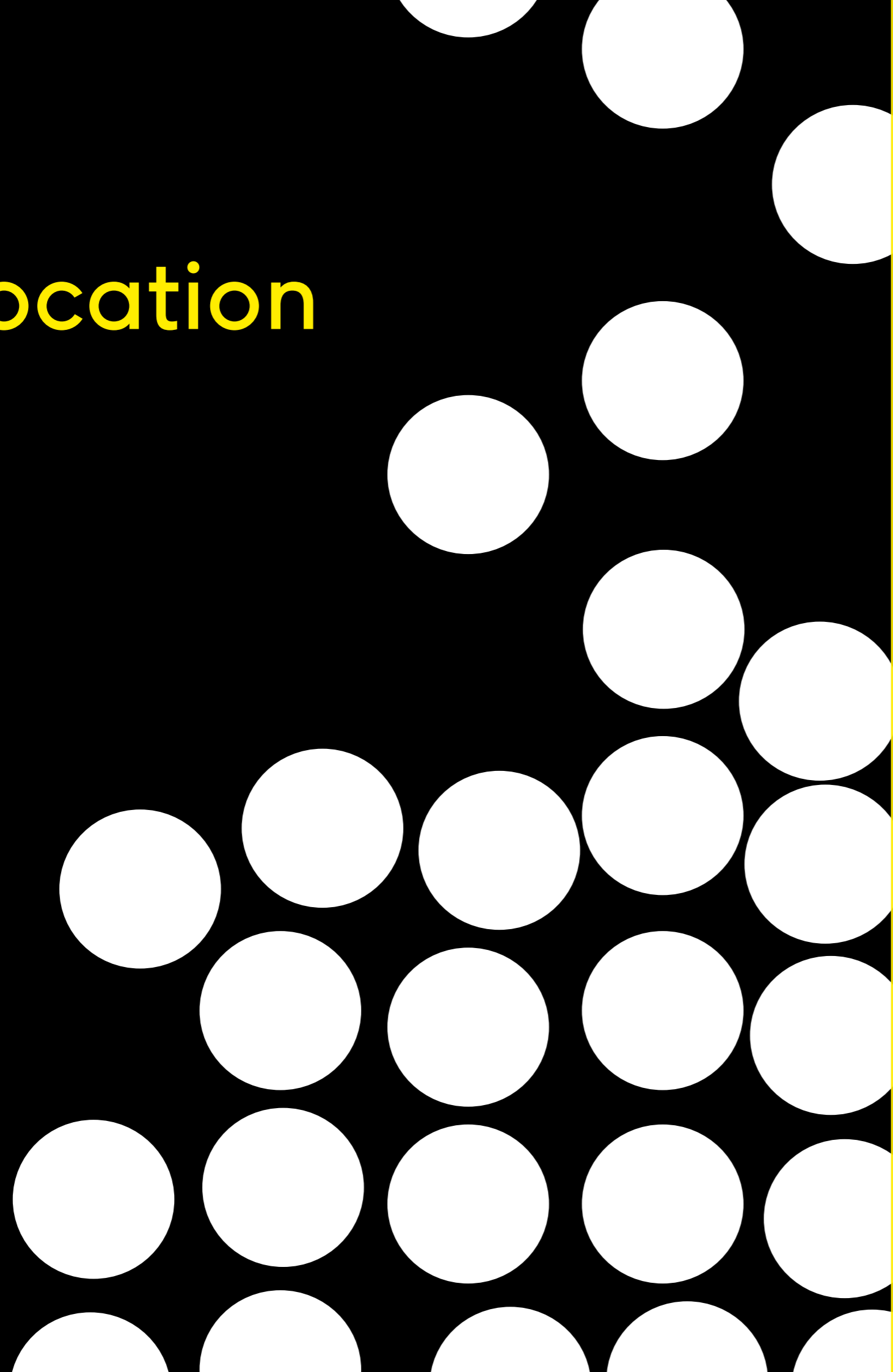
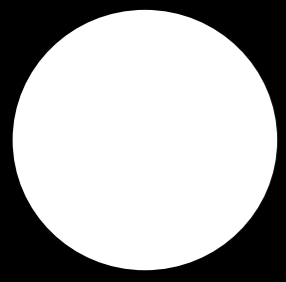
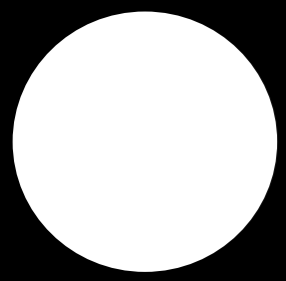


Republic is at the centre of a dynamic, rapidly evolving East London district surrounded by a burgeoning residential population. It is within easy walking distance of Canary Wharf and is connected to the City and West End by excellent transport links.

The Import and Export Buildings consist of 514,000 sq ft of office space for creative and innovative businesses. Republic is already home to a dynamic mix of sectors from digital media and international telecoms giants to co-working and charities.

Retail and leisure units are available from 616 sq ft to 17,714 sq ft.

Location

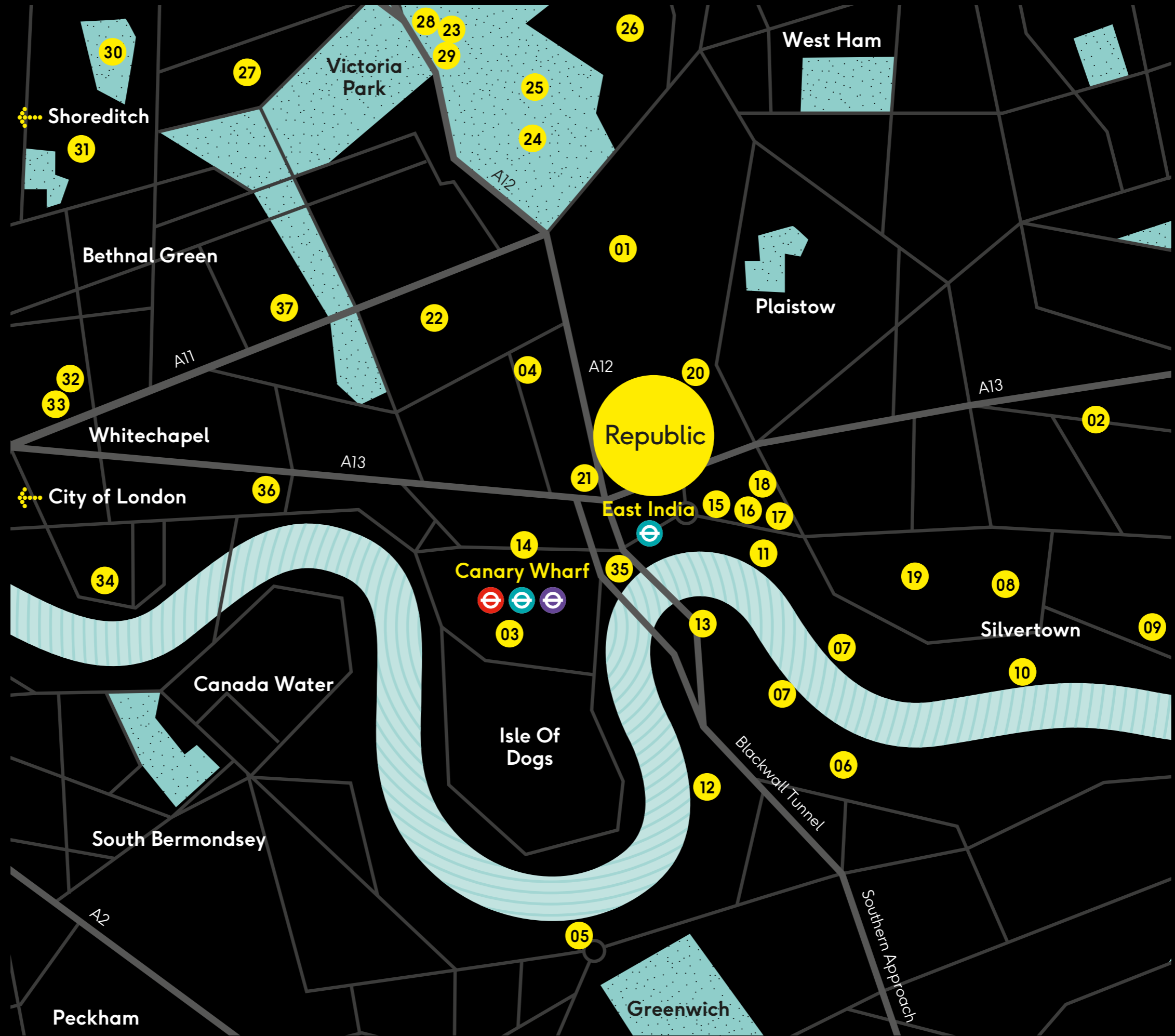


# Docklands

## The Bigger Picture

### Landmarks

- 01 3 Mills Studios
- 02 Beckton District Park
- 03 Canary Wharf
- 04 Crisp Street Market
- 05 Cutty Sark
- 06 Greenwich Peninsula Ecology Park
- 07 Emirates Air Line Cable Car
- 08 ExCel London
- 09 London City Airport
- 10 Thames Barrier Park
- 11 Trinity Buoy Wharf
- 12 Meantime Brewing Company
- 13 The O2
- 14 Crossrail Place
- 15 Limmo Peninsula Ecology Park
- 16 London City Island
- 17 English National Ballet
- 18 National Film School
- 19 Royal Victoria Dock
- 20 Aberfeldy Village
- 21 Blackwall Reach
- 22 Poplar Union Arts Space
- 23 Fish Island
- 24 The London Stadium
- 25 Queen Elizabeth Olympic Park
- 26 Westfield Stratford City
- 27 Victoria Park Village
- 28 Cornerstone
- 29 Crate Brewery & Pizzeria
- 30 London Fields
- 31 Broadway Market
- 32 Brick Lane
- 33 Whitechapel Gallery
- 34 Tobacco Dock
- 35 New Providence Wharf
- 36 The Troxy
- 37 Queen Mary University





## Connection

## Key Travel Times (from East India DLR)

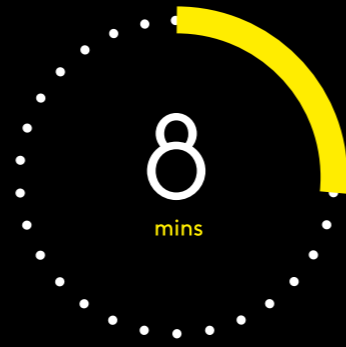
Canning Town  
(DLR)



Canary Wharf  
(DLR & Walk)



London City Airport  
(DLR)



Stratford  
(DLR & Jubilee)



Bank  
(DLR)

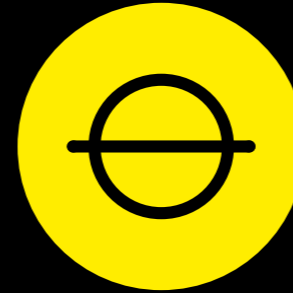


Bond Street  
(DLR & Jubilee)



## Key Facts

East India DLR Station Onsite



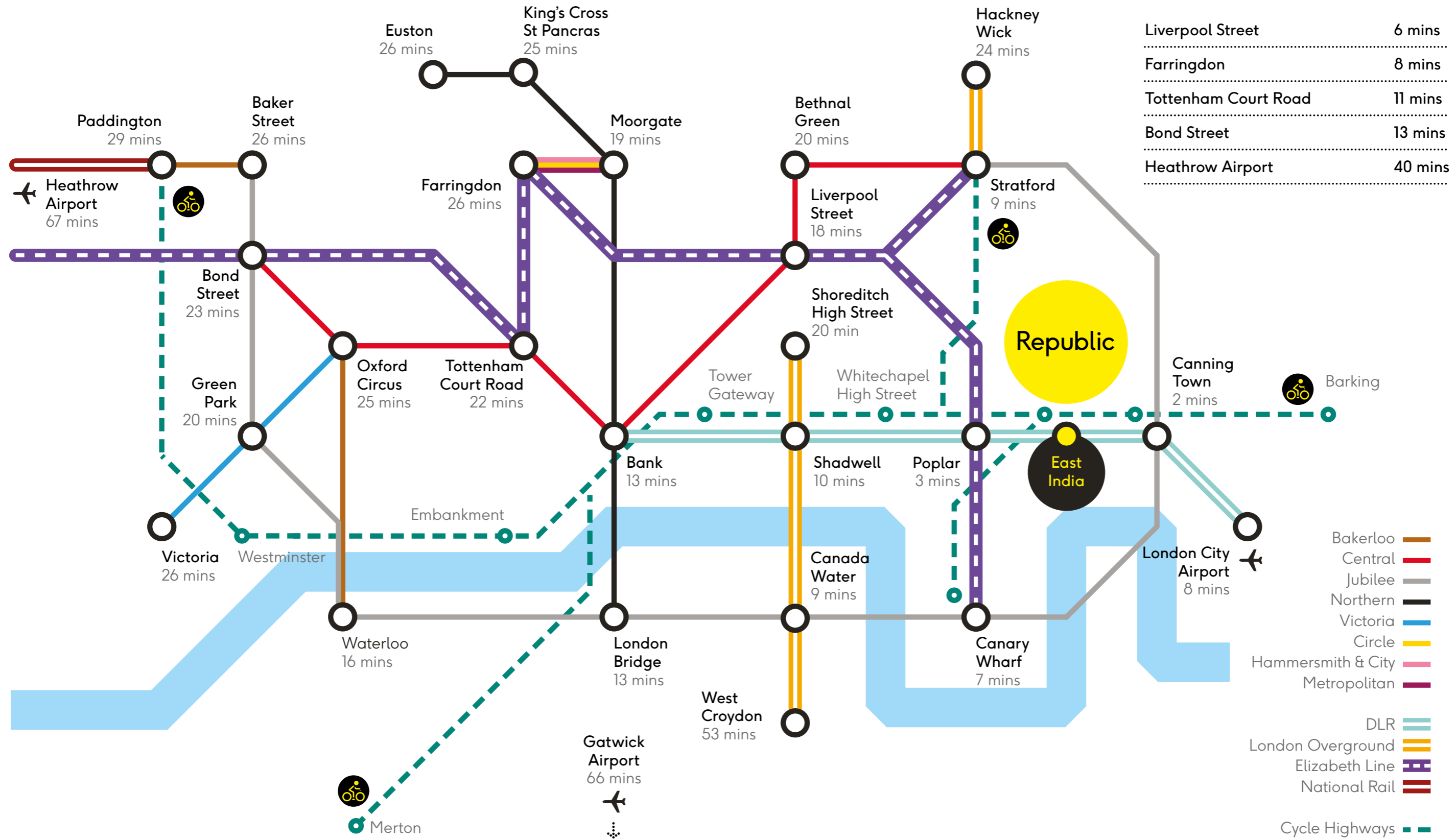
Elizabeth Line  
5 minutes to the platform



Cycle Super Highway  
runs through the site



# Connection Transport Map

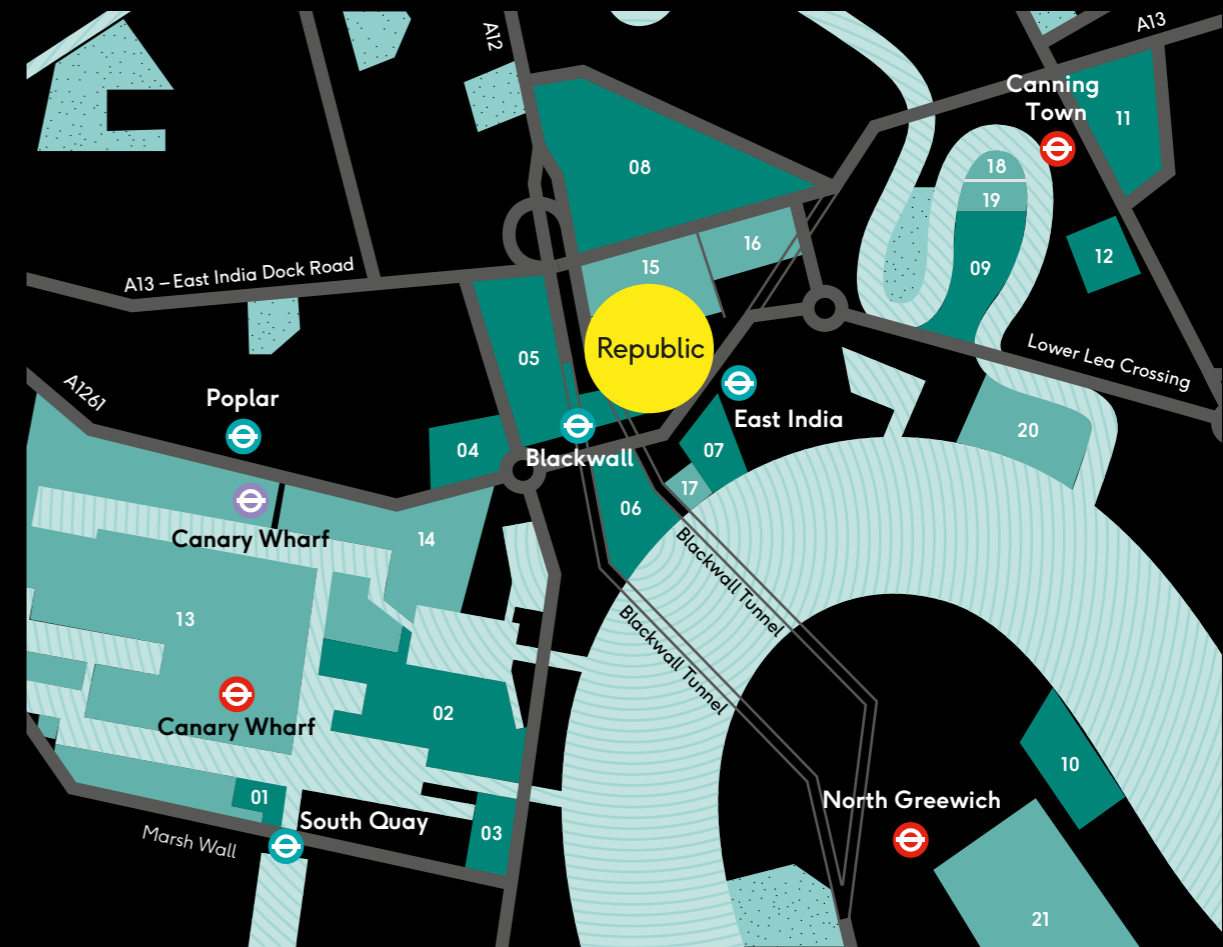


Main map shows travel times from Republic. Source: TfL.

## Connection Catchment

Republic's newly transformed campus is at the forefront of East London's commercial and cultural regeneration.

With over 20,000 new residents coming to the area through new residential developments and over 108,000 workers via new commercial developments – the local catchment population is constantly growing.



Number of residential schemes under construction within eyesight of Republic



5th fastest growing borough in London for new business growth



Increase in the population of Tower Hamlets over the past ten years



Fastest growing borough in the UK for population growth



### Local Residential Developments (Under Construction)

- 1 South Quay Plaza  
1,332 Residents
- 2 Canary Wharf  
5,500 Residents
- 3 Dollar Bay  
182 Residents
- 4 Manhattan Plaza  
882 Residents
- 5 Blackwall Reach  
2,250 Residents
- 6 New Providence Wharf  
1,089 Residents
- 7 Blackwall Yard  
1,062 Residents
- 8 Aberfeldy Village  
1,358 Residents
- 9 London City Island  
2,559 Residents
- 10 Upper Riverside  
1,500 Residents
- 11 Hallsville Quarter  
1,650 Residents
- 12 Brunel Street Works  
975 Residents

### Local Commercial Developments (Workforce)

- 13 Canary Wharf  
105,000 Workers
- 14 Billingsgate Market  
C. 300 Workers
- 15 Global Switch  
C. 300 Workers
- 16 Telehouse  
500 Workers
- 17 Reuters  
600 Workers
- 18 London Film School  
C. 100 Workers
- 19 English National Ballet  
C. 50 Workers
- 20 Trinity Buoy Wharf  
200 Workers
- 21 Greenwich Peninsula  
1,000 Workers

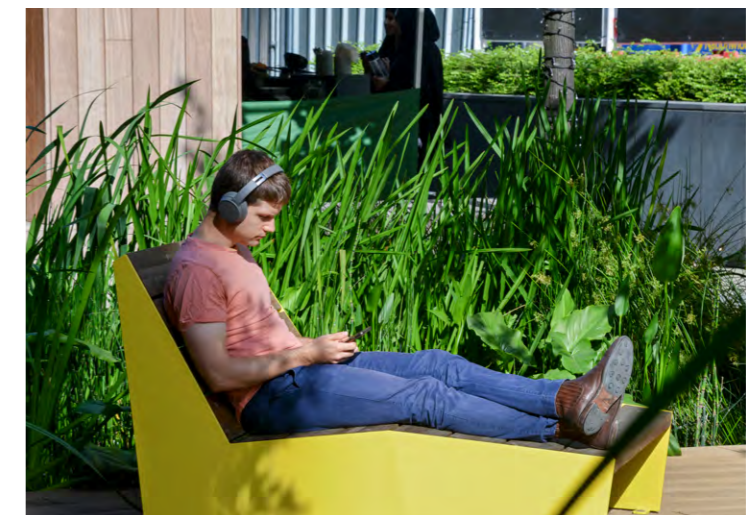


**Onsite  
Amenity**



Stunning  
water garden –  
a public realm  
at the heart  
of the campus

Communal Facilities  
Public Realm



Eat, Drink, Exercise



Salento  
Italian  
Restaurant



PureGym/  
F45 Training

Simply  
Fresh

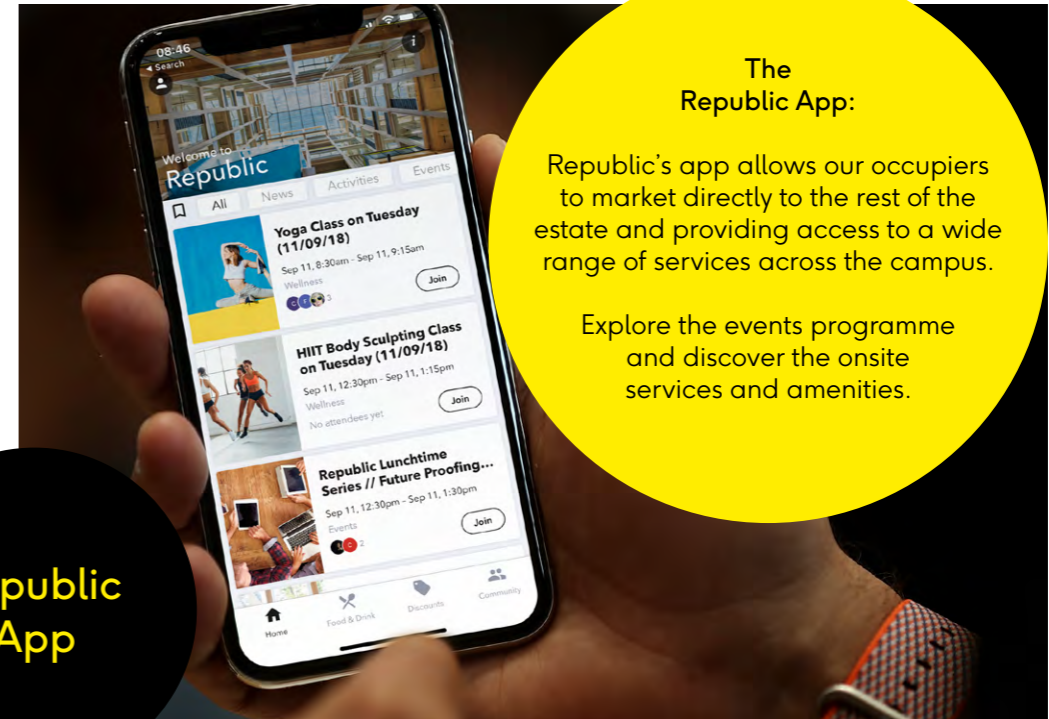


The  
Gentlemen  
Baristas





# Community



Events

Republic App

The Republic App:  
Republic's app allows our occupiers to market directly to the rest of the estate and providing access to a wide range of services across the campus.  
Explore the events programme and discover the onsite services and amenities.



A year-round schedule of events and activities to exercise the mind and body

Wellness



Available  
Space

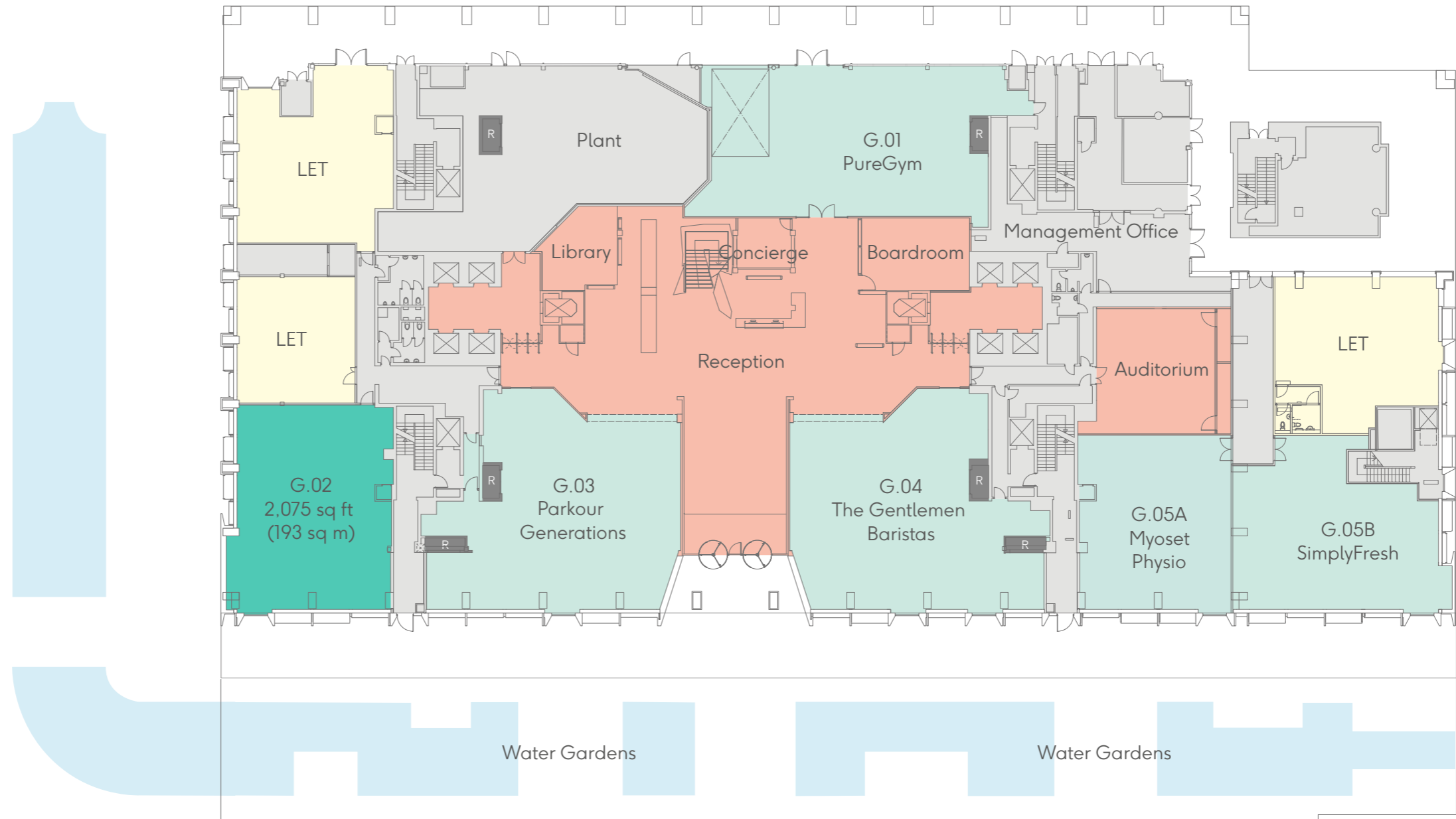


# Import Building Ground Floor Plan

Retail Unit	
G.01	PureGym
G.02	2,075 sq ft / 193 sq m
G.03	Parkour Generations
G.04	The Gentlemen Baristas
G.05A	Myoset Physio
G.05B	SimplyFresh
<b>Total Retail</b>	<b>2,075 sq ft / 193 sq m</b>

**Timing**  
Available now

**Uses:**  
Retail, restaurant, bar and leisure uses considered



**MYOSET**



Available ●

Let ●



# Export Building Ground Floor Plan

## Retail Units

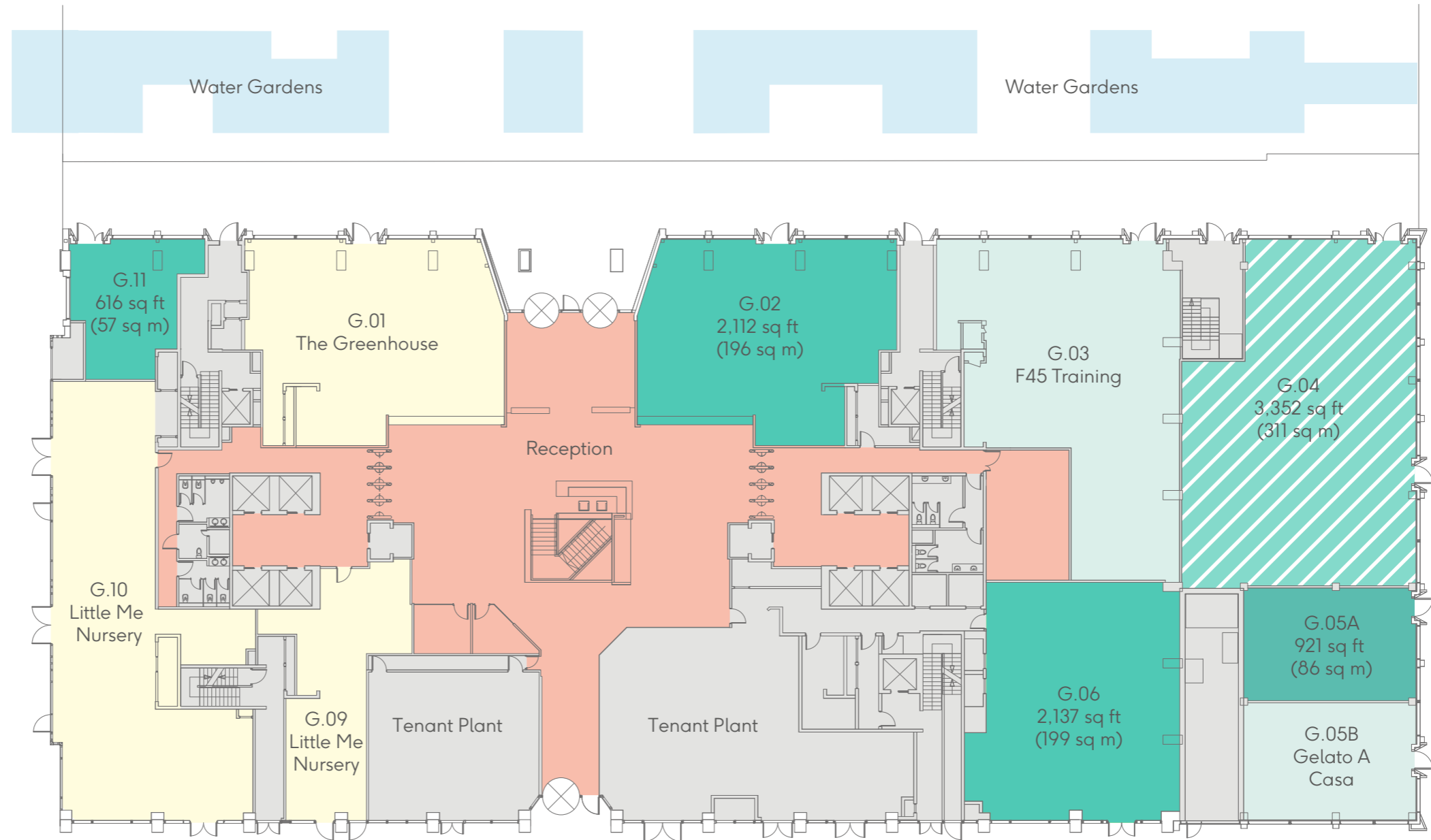
G.01	The Greenhouse
G.02	2,112 sq ft / 196 sq m
G.03	F45 Training
G.04	Under Offer
G.05A	921 sq ft / 86 sq m
G.05B	Gelato A Casa
G.06	2,137 sq ft / 199 sq m
G.09	Little Me Nursery
G.10	Little Me Nursery
G.11	616 sq ft / 57 sq m
<b>Total Retail</b>	<b>5,786 sq ft / 538 sq m</b>

## Timing

Available Now

## Uses:

Retail, restaurant, bar and leisure uses considered



Available	
Let	
Under Offer	



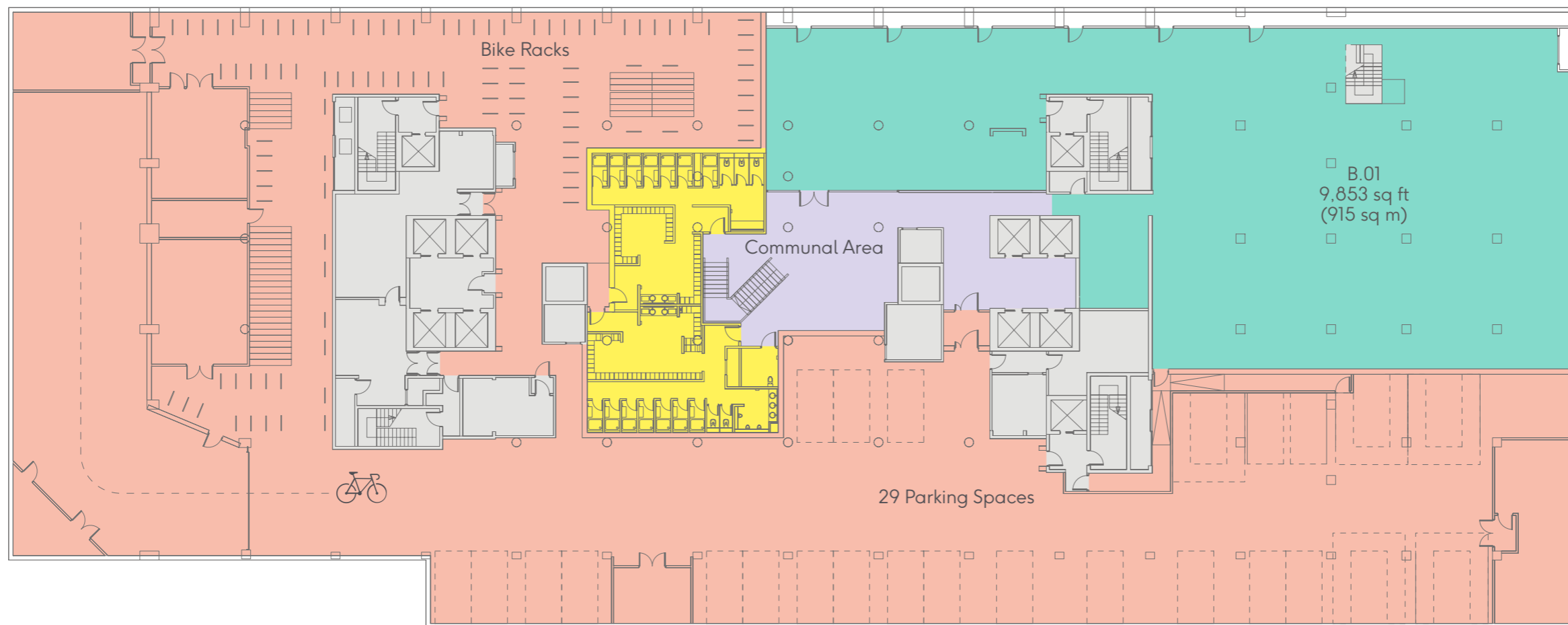
Floor plans not to scale.  
For indicative purposes only.



# Export Building Basement Floor Plan

Basement

B.01 9,853 sq ft / 915 sq m



- Available Retail/Event Space
- Showers
- Reception and Tenant Amenities
- Communal Area
- Core



## Contact Details

---

### Retail

---

#### CBRE

Steven Stedman  
DL +44 (0) 20 7182 2712  
M +44 (0) 7967 697 920  
steven.stedman@cbre.com

—  
Celine Foulad  
M +44 (0) 7453 289 289  
celine.foulad@cbre.com

#### CF Commercial

John Giblin  
DL +44 (0) 20 3319 5821  
M +44 (0) 7867 505 604  
john@cfcommercial.co.uk

—  
Gabrielle Drury  
M +44 (0) 7800 857 056  
gabrielle@cfcommercial.co.uk

republic.london

TRILOGY

 LaSalle  
INVESTMENT MANAGEMENT®

Important Notice: 1. Particulars: The particulars are not an offer or contract, nor part of one. You should not rely on statements by CBRE or CF Commercial in the particulars or by word of mouth or in writing ("information") as being factually accurate about the property, its condition or its value. Neither CBRE or CF Commercial has any authority to make any representations about the property and accordingly any information give in entirety without responsibility on the part of the agents, seller (s) or lessor (s). 2. Photos etc: The photographs show only certain parts of the property as they appeared at the time they were taken. Areas, measurements and distances given are approximate only. 3. Regulations etc: Any references to alterations to, or use of, any part of the property does not mean that any necessary planning, building regulations or other consent has been obtained. A buyer or lessee must find out by inspection or in other ways that these matters have been properly dealt with and that all information is correct. CGIs are for indicative purposes only and may be subject to change. CBRE is the trading name of CBRE Limited, a limited liability partnership registered in England and Wales with registered company number 3536032. November 2022.

Designed by Cre8te - 020 3468 5760 - cre8te.london

