

**KING  
WILLIAM  
ST. 10**

[Click to enter](#)

The opportunity

Location

Nearby

Accommodation

Tourism

Contact

Retail & leisure



**From 360 to 15,380 sq.ft of retail &  
leisure space available in the heart of London**

18 King William Street, London, EC4N 7BQ



# KING WILLIAM ST. 18

The opportunity

Location

Nearby

Accommodation

Tourism

Contact



18 King William Street is the perfect space for a potential 21<sup>st</sup> century leisure extravaganza. Whether it be a bar, restaurant, retail store or luxury boutique the space is perfectly positioned under 18 King William Street in the heart of London's business district.

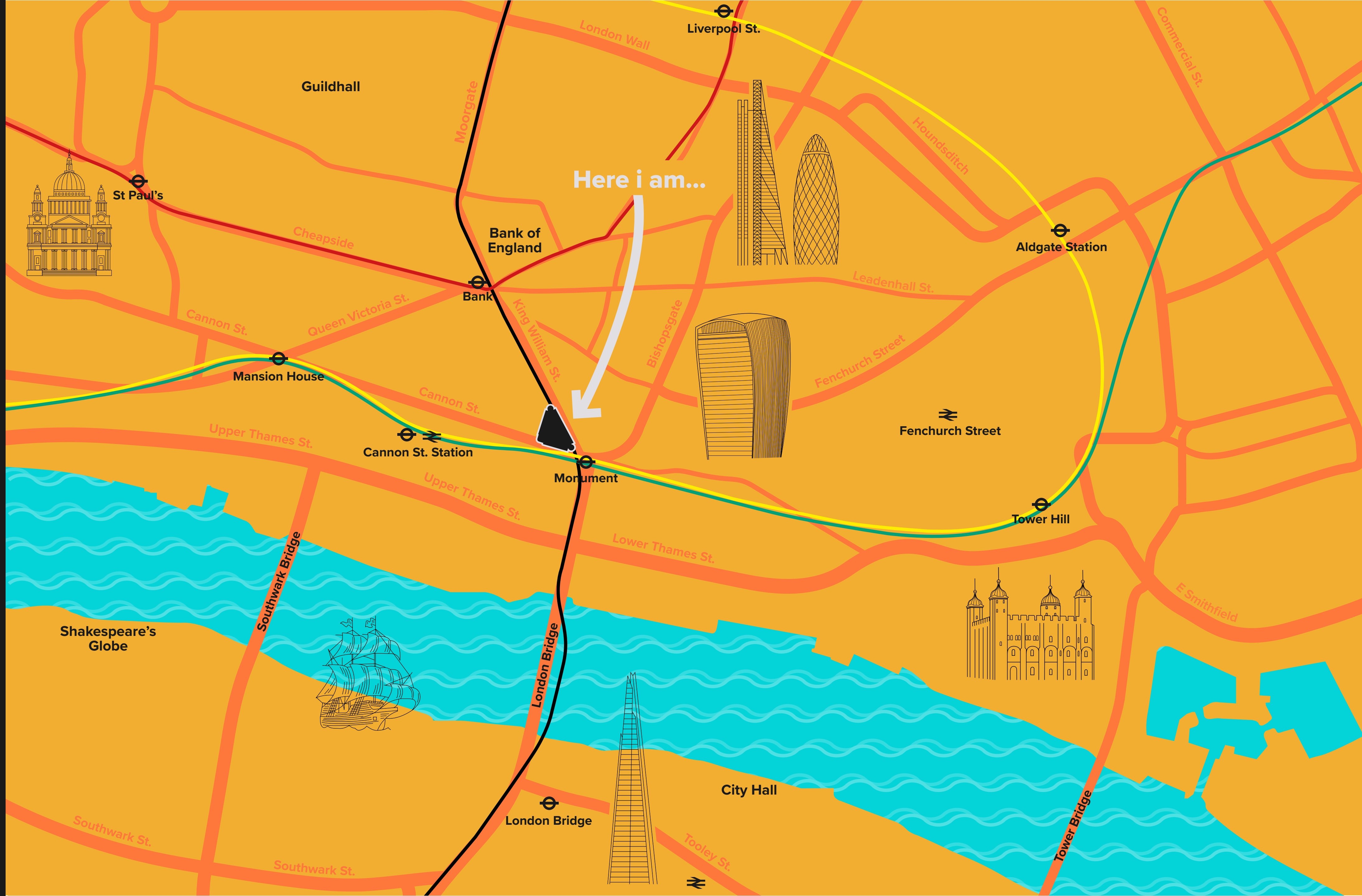
The space is surrounded on all sides by famous landmarks. The Bank of England can be found a few minutes walk north, the Walkie Talkie building to the east, London Bridge to the south and St Paul's Cathedral to the west. The area is both a tourist hotspot and home to seemingly endless offices, providing a constant throng of passing footfall - ideal for potential retail & leisure space.

18 King William Street is seriously well connected - it is only a minutes' walk from Monument tube station and is literally next door to the new TFL Bank Station Entrance which will open in early 2023.

Large available space like this in The City of London is rare - the current status of the space means that it's a blank canvas ready for a tenant to paint a masterpiece. Spaces are available on both the ground floor and basement levels.

# KING WILLIAM ST. 18

- The opportunity
- Location
- Nearby
- Accommodation
- Tourism
- Contact



# KING WILLIAM ST. 18

The opportunity

Location

Nearby

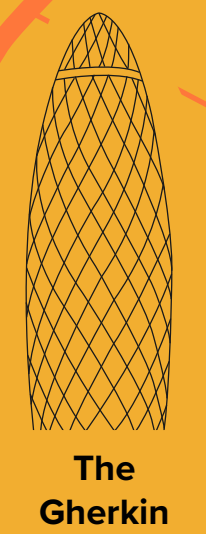
Accommodation

Tourism

Contact



## 18 King William Street



The Gherkin



Walkie Talkie Building

# Really <sup>really</sup> well located



Located in the heart of  
The City of London within the  
financial centre for the UK



Over 500,000 people  
work in The City of London  
each day



Excellent transport links located close  
to historic buildings, monuments,  
high-rise skyscrapers and restaurants

The opportunity

Location

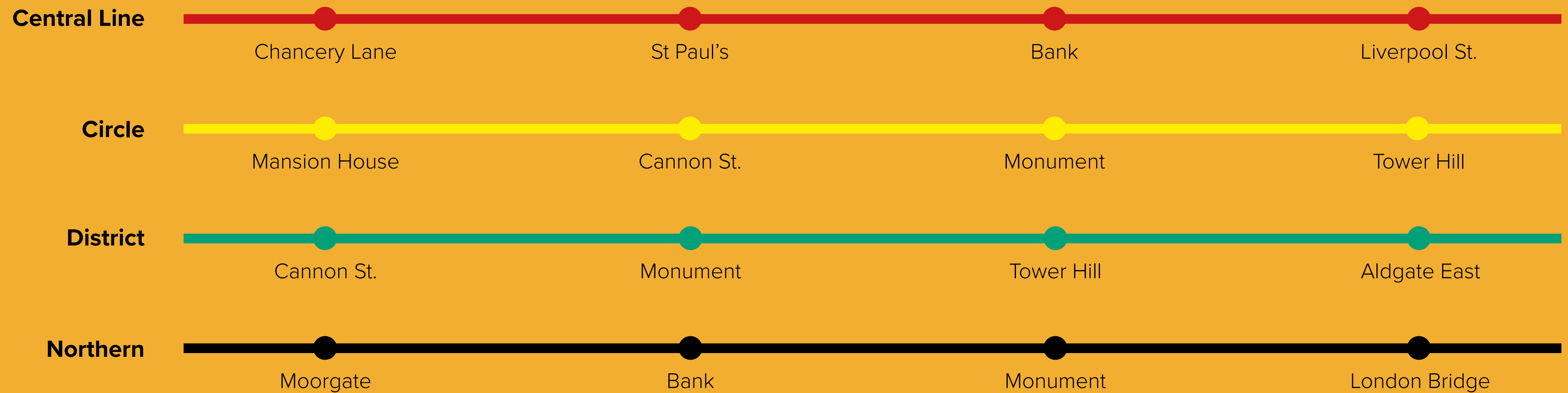
Nearby

Accommodation

Tourism

Contact

## Connected Tube Lines



# Unrivalled connectivity

TFL are currently working round the clock to build a new state-of-the-art complex which will interlink Bank and Monument stations. A new station entrance will be located next-door to us on Cannon St. The two stations are currently the **3<sup>rd</sup> busiest interchange** on the London underground network - over 120 million

people pass through these stations every year. Yes you read that right **120 million people** - amazing no? The works taking place will increase the station's capacity by a whopping 40% equating to an extra 56,000 passengers per annum. Most of the construction is taking place underground so as to

avoid any damage to the 31 listed buildings that call the area home. Use of Bank has risen by over 70% passenger journeys taking the total to over 475,000 passengers per day. All this commuting is taking place right next-door. Completion for the new station is set for early 2023.

The opportunity

Location

Nearby

Accommodation

Tourism

Contact



# Near, far - wherever you are...

2022

New link to Northern line and expansion to the current complex to be open by mid 2022, this is due to demand that outstrips current capacity

1.35 billion

The rail network in total has over 1.35 billion passengers each year

13,280,504

3<sup>rd</sup> busiest interchange on the London underground network with over 120 million passengers a year.

40,000

Up to 40,000 people cross London bridge every day, London bridge is 5 minutes walk from 18 King William St.

The opportunity

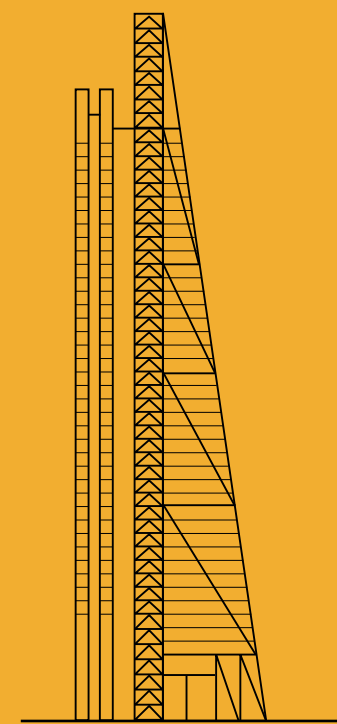
Location

Nearby

Accommodation

Tourism

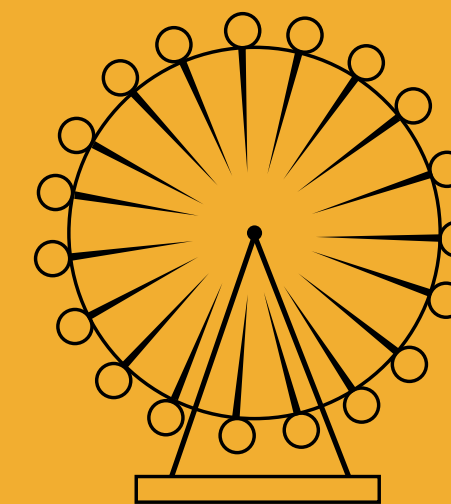
Contact



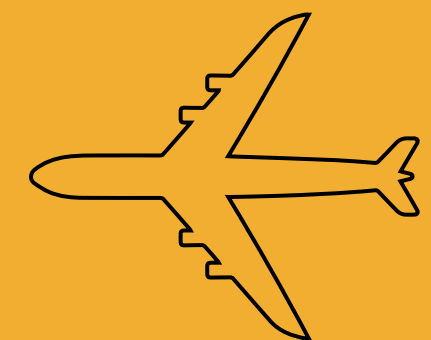
**Leadenhall Building**  
7 minutes walk



**St Paul's Cathedral**  
12 minutes walk



**London Eye**  
12 minutes drive



**City Airport**  
23 minutes drive





# The City of London

The opportunity

Location

Nearby

Accommodation

Tourism

Contact

• 2018 - **522,000** people employed within the City of London Borough

• 2026 – Estimated **600,000** people employed within the City of London Borough

• The local borough contributed approx. **£69bn** in gross value to the UK's national income in 2018 (that is around 4% UK or 15% London's output)

• **70%** of the boroughs employed are highly skilled compared to the national average of 47%

• Over **21m** people visited The City of London in 2018 with a direct spend of over **£2bn**

• Tourism supports over **18,000** FTE jobs in the City



# KING WILLIAM ST. 18

The opportunity

Location

Nearby

Accommodation

Tourism

Contact

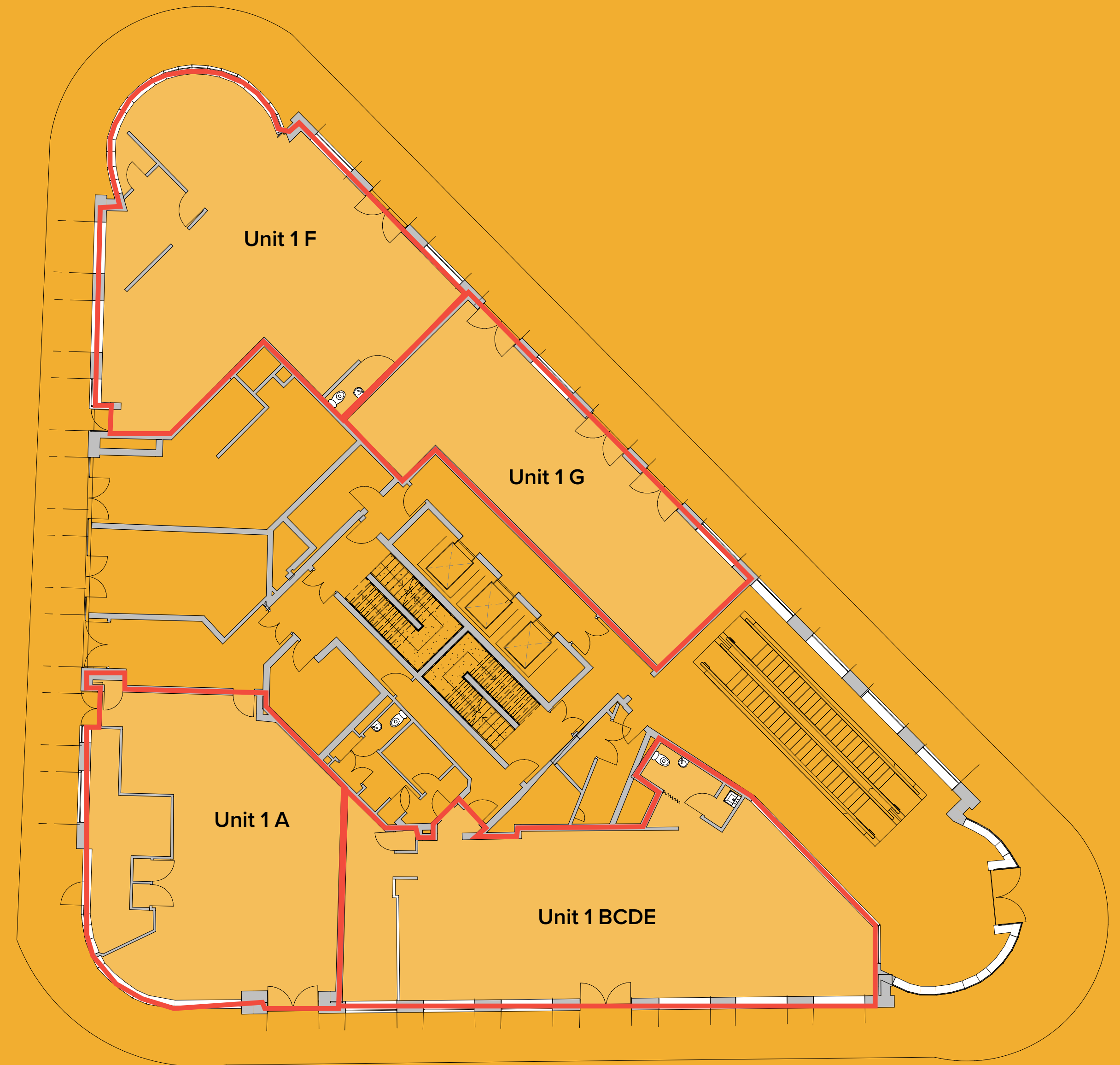


18 King William Street

# Ground floor

Gross Internal Area	
Unit 1A	893 sq.ft
Unit 1B,C,D,E	1,534 sq.ft
Unit 1F	1,274 sq.ft
Unit 1G	830 sq.ft
<b>Total</b>	<b>4,531 sq.ft</b>

Units can be combined if required



The opportunity

Location

Nearby

Accommodation

Tourism

Contact



# Basement

Gross Internal Area	
Upper basement	1,671 sq.ft
Lower basement	5,634 sq.ft

The opportunity

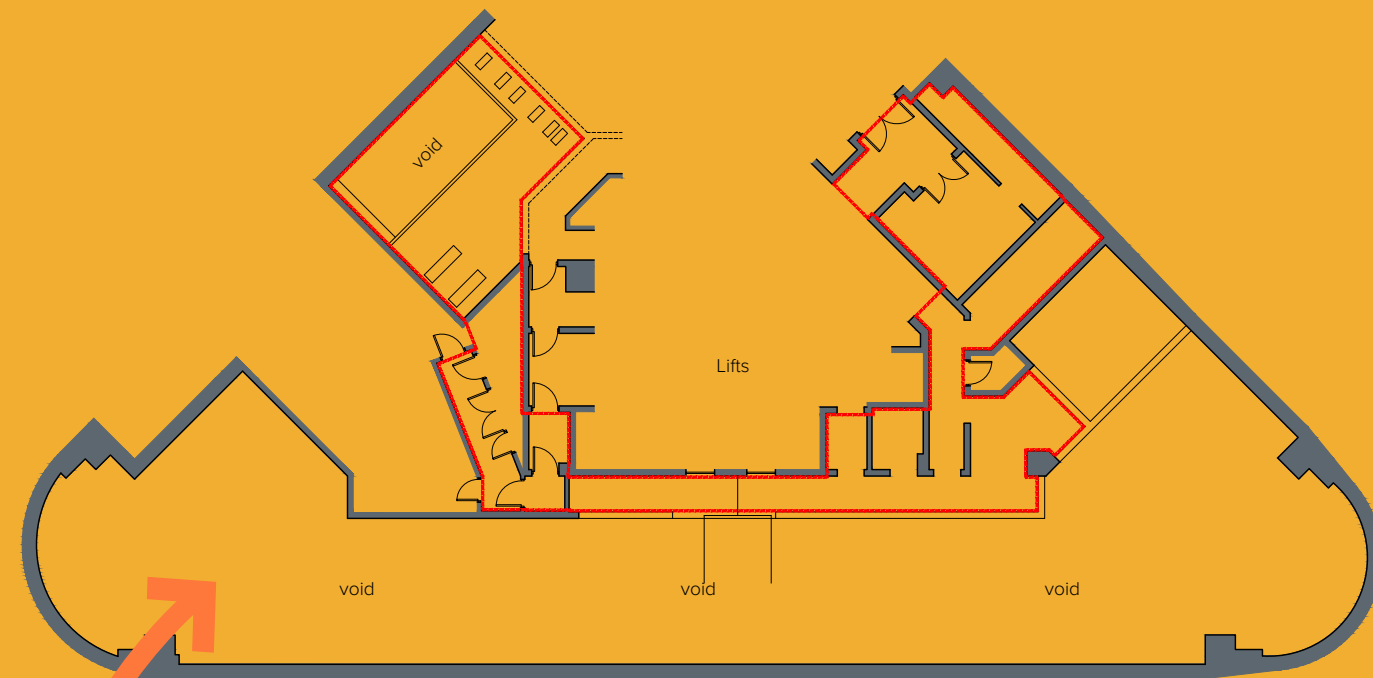
Location

Nearby

Accommodation

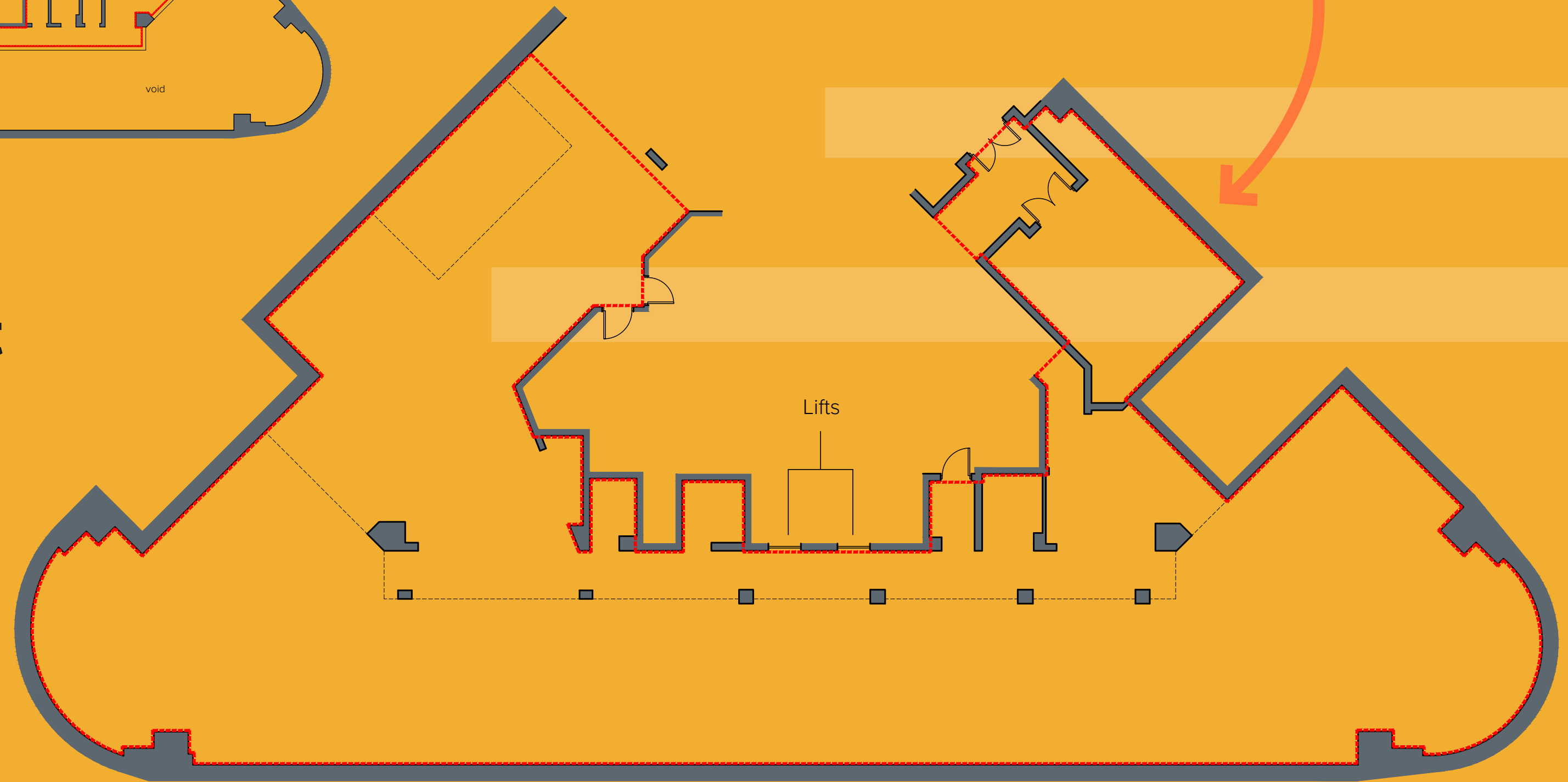
Tourism

Contact



Upper basement

Lower basement



KING  
WILLIAM  
ST. 18

The opportunity

Location

Nearby

Accommodation

Tourism

Contact



Welcome



The opportunity

Location

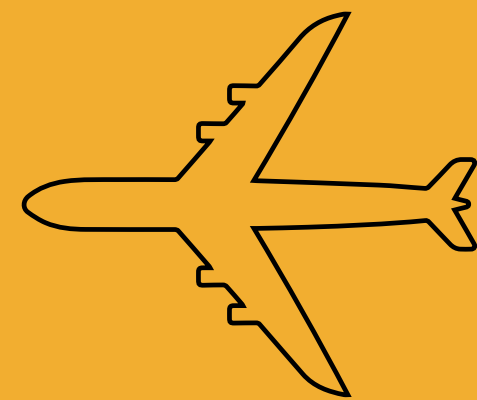
Nearby

Accommodation

Tourism

Contact

Bank Station and Monument Station have over 120 million people pass through these stations every year.



London had 20.42m international visitors in 2018



London is the  
**3<sup>rd</sup>**  
most popular  
city destination  
for tourists  
globally



Approximately 6,100 Hop on Hop off London Tour Buses pass each year



425 hectares  
of green space  
within a 5 mile  
radius

## Notable Tourist Attractions

### Sky Garden

0.2 miles - 600,000 visitors a year

### St Paul's Cathedral

0.6 miles - 2m visitors a year

### HMS Belfast

0.6 miles - 250,000 visitors a year

### Shakespeare's Globe

0.7 miles - 1m visitors a year

### British Museum

2.5 miles - 5.9m visitors a year

### Southbank Centre

1.7 miles - 3.2m visitors a year

### Somerset House

1.5 miles - 3.2m visitors a year

### Tate Modern

1 mile - 5.7m visitors a year



KING  
WILLIAM  
ST. 18

The opportunity

Location

Nearby

Accommodation

Tourism

Contact

KING  
WILLIAM  
ST. 18

18 King William Street, London, EC4N 7BQ

All enquiries please contact:

BRUCE  
GILLINGHAM  
POLLARD

**Pete Wood**

+44(0) 7872 602336  
peter@brucegillinghampollard.com

**Dom Tixerant**

+44(0) 7742 756817  
dominic@brucegillinghampollard.com

LUNSONMITCHENALL  
020 7478 4950  
LUNSON-MITCHENALL.CO.UK

**George Oppenheim**

+44(0) 20 7478 4968  
georgeo@lunson-mitchenall.co.uk

**Ruvan Sangra**

+44(0) 20 7478 4957  
ruvans@lunson-mitchenall.co.uk



**FI** REAL ESTATE  
MANAGEMENT

0845 500 61 61  
www.fi-rem.com  
enquiries@fi-rem.com

**Ryan Barber**

rbarber@fi-rem.com  
07919 047 036

**Joey Savaglia**

jsavaglia@fi-rem.com  
07552 827 899

