

Forth House

Suite 3, Burnside Business Court
KY11 1NZ



**First floor
self-contained
office suite**

**On-site
parking**

Close to Forth bridges and M90.

Close to Inverkeithing train station

Spacious office

24 hr access

BURNSIDE BUSINESS COURT

The two-storey property is situated in the Bridgehead area on the outskirts of Inverkeithing and within walking distance of the Inverkeithing Railway Station. The M90 is just a 5-minute drive giving direct links to the central Scotland motorway network, to Perth and Edinburgh. There are public transport links provided by bus and railway services via the town's own stations.

The suites benefit from:

- Self-contained office suite
- Individual offices
- Dedicated kitchen and toilet facilities
- Disabled access
- 24hr access
- On site car parking
- Lift

AVAILABILITY

Suite 3 – 2826 sq ft. (262.5 sqm) – £21,500 PA

ENERGY PERFORMANCE RATING

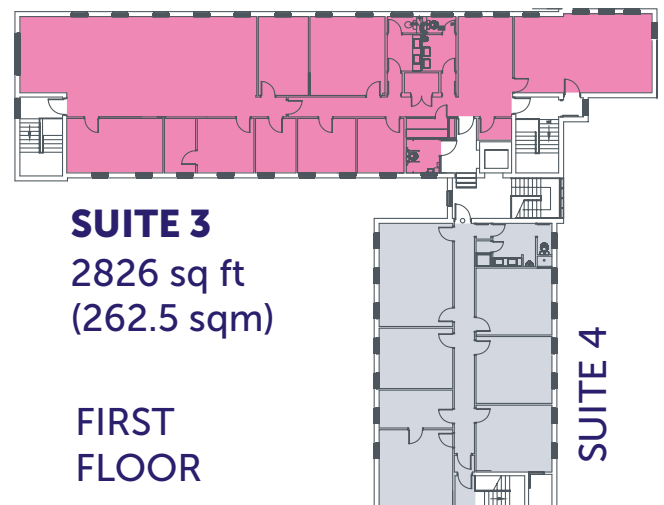
Energy Performance rating ranging from B-C, individual property ratings can be provided on enquiry.

LEASE TERMS OVERVIEW

An overview of standard lease terms are as attached

FURTHER INFORMATION

To obtain details on availability and rental terms for Burnside Business Court, please contact the Business Property Team:



Business Property Team
fifemeansbusiness@fife.gov.uk

#fifemeansbusiness

Fife Council give notice that: (i) the particulars are set out as a general outline only for the guidance of intended purchasers or lessees and do not constitute, nor constitute part of, an offer or contract; (ii) all descriptions, dimensions, reference to condition and necessary permissions for use and occupation, and other details are given without responsibility and any intending purchasers or tenants should not rely on them as statements or representations of fact but must satisfy themselves by inspection or otherwise of the correctness of each item.

Invest Fife is an investment initiative supported by Fife Council and works in partnership with Scottish Enterprise and Scottish Development International.