

# axiomhouse

THE CENTRE, FELTHAM TW13 4AU



REFURBISHED TOWN  
CENTRE OFFICES  
ADJACENT TO  
FELTHAM STATION

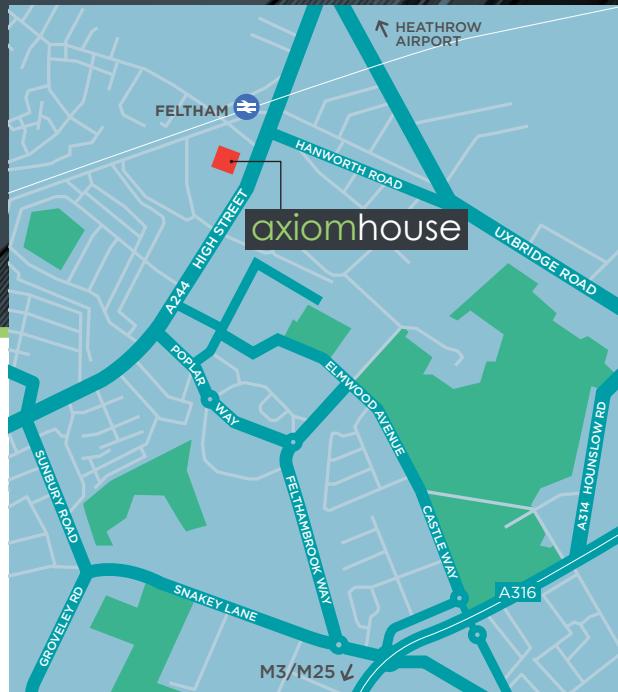
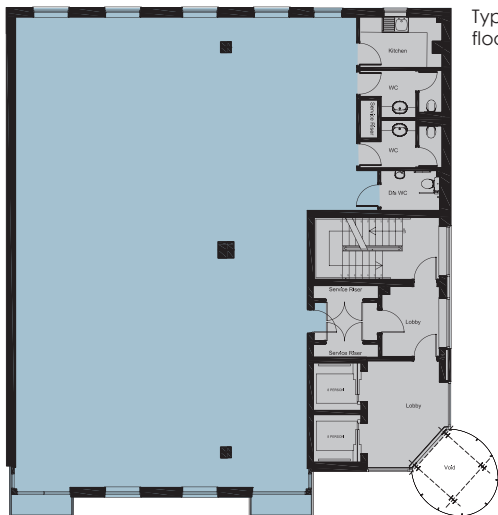
2,253 to 6,759 SQ FT  
(209 to 628 SQ M)  
TO LET

## Location

Axiom House is located in the heart of Feltham Town Centre within a 3 minute walk of the station. The Centre offers an excellent range of amenities including an Asda Superstore, Costa Coffee, Starbucks and bank facilities. Feltham Station provides a fast regular service to London Waterloo (journey time 29 mins). Feltham is well placed for Heathrow Airport (approx 4 miles) and the motorway network with the M3/A316 being within 2 miles.

## Description

Axiom House is a modern office building with a ground floor entrance/reception area and 5 upper floors. The 3rd, 4th and 5th floors have been comprehensively refurbished and benefit from comfort cooling and heating, LED lighting and raised access floors. The 5th floor benefits from an existing fit out.



## Amenities

- Double height ground floor reception
- Comfort cooling and heating
- LED Lighting
- Raised access floors
- Two eight person passenger lifts
- Exclusive Male, female and disabled WC's
- Allocated car parking
- Energy Performance Rating D-77

## Accommodation

Floor	sq ft	sq m
Fifth	2,253	209.3
Fourth	2,253	209.3
Third	2,253	209.3
<b>Total</b>	<b>6,759</b>	<b>627.9</b>

### Terms:

Available on new leases direct with the Landlord.

### Viewing:

Strictly by appointment through the sole agents.



**Paul Flannery**  
 e: paulf@desouza.co.uk  
 t: 020 8707 3035  
 m: 07946 422 920



**Marcus Smith**  
 e: msmith@vailwilliams.com  
 t: 020 8564 8300  
 m: 07879 434 314