



Prime Industrial / Warehouse Development Site
For up to 250,000 sq ft **ALL ENQUIRIES**

- Adjacent to Glasgow Airport
- Excellent access to M8 (J27)
- New bridge will provide direct access to Glasgow Airport
- Scotland's largest fully enclosed industrial/distribution park
- 24/7 manned security and CCTV
- Landscaped environment

GLASGOW

westway

RENFREW ■ GLASGOW ■ PA4 8DJ



Design and Build Opportunities Up to 250,000 sq ft



Steel Portal Frame
Construction



Secure Yards



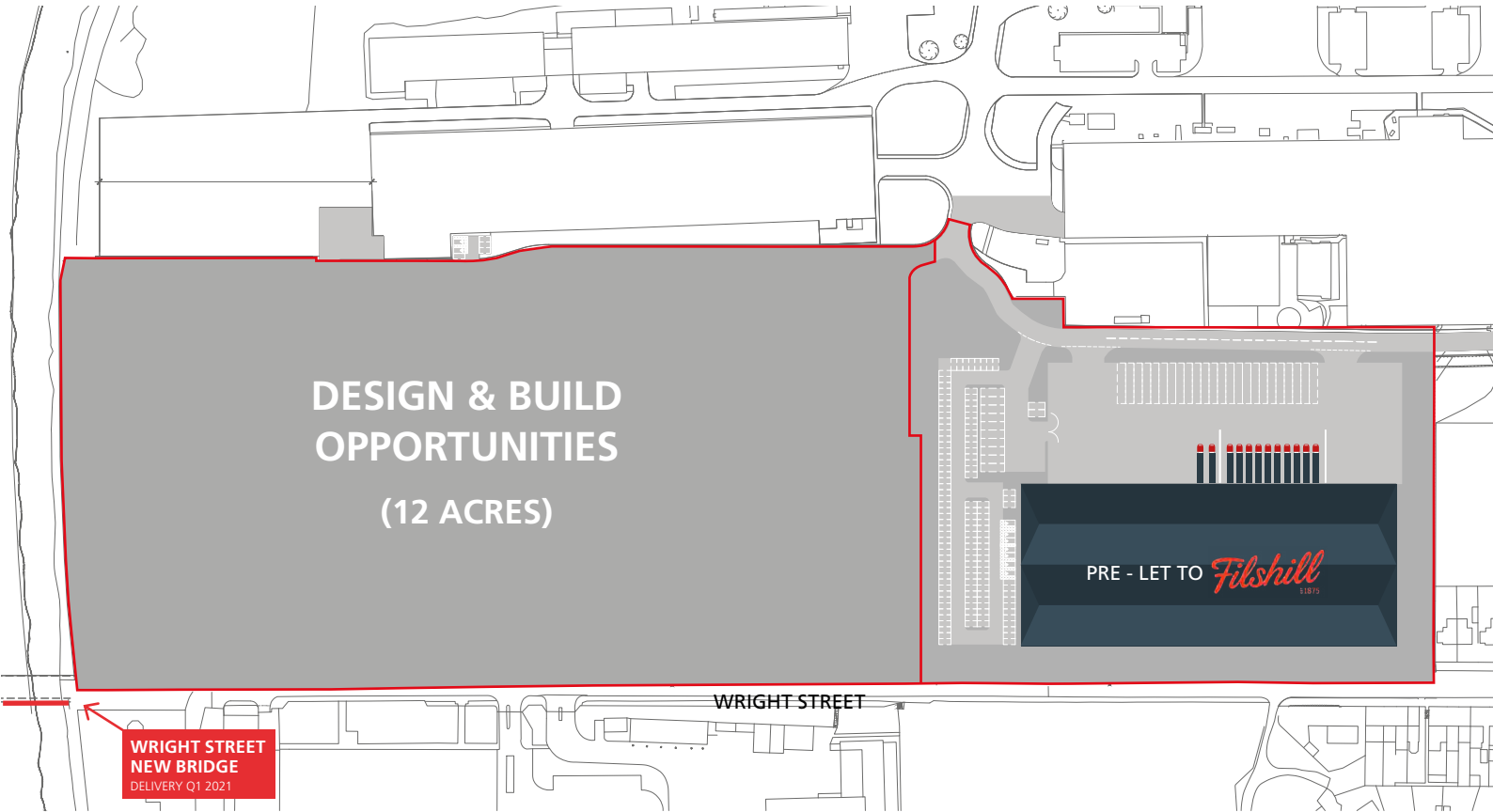
High quality
offices

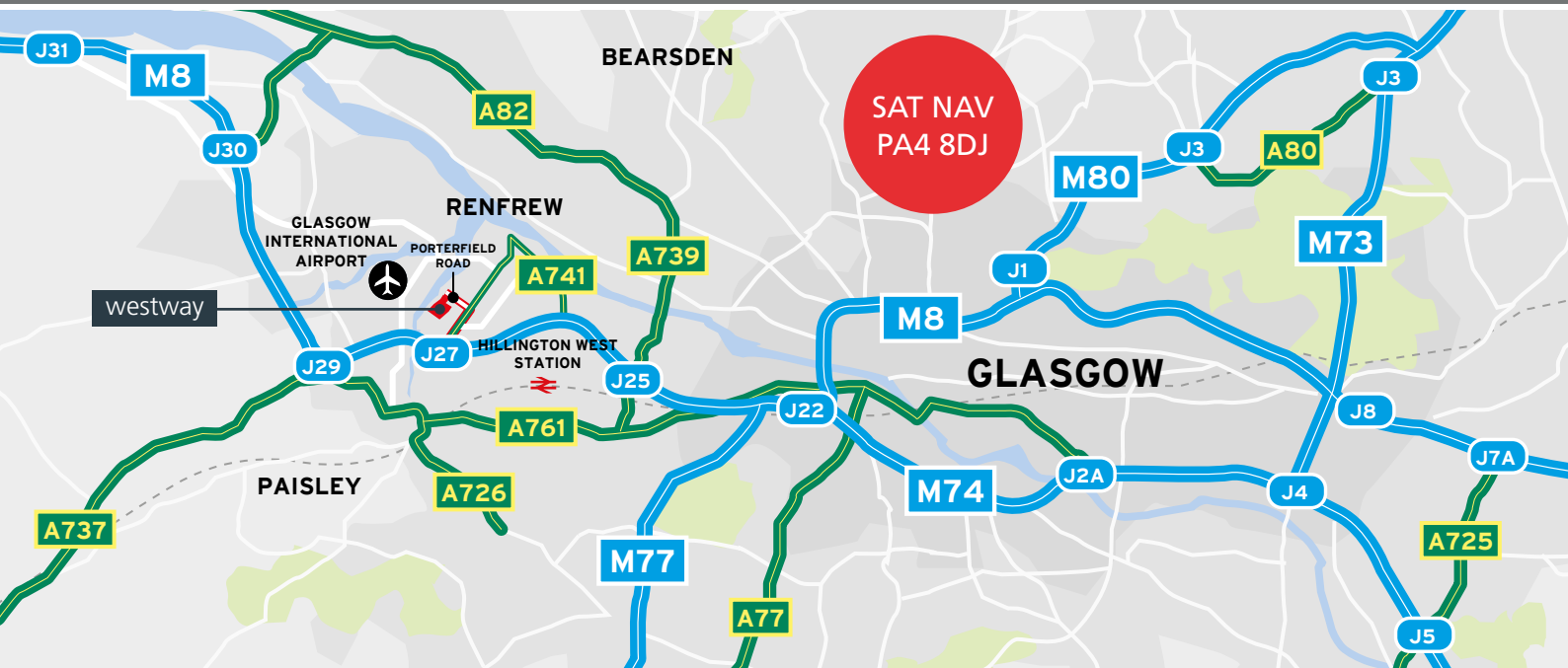


Dedicated car
parking areas

GLASGOW

SITE PLAN





LOCATION

Westway lies approximately 10 miles west of Glasgow City Centre and adjacent to Glasgow International Airport. Westway is accessed via the four way Junction 27 of the M8 motorway, just 1.2 miles away, which provides access to Glasgow, Edinburgh, the M74, M77, M80 and in turn the national motorway network.

The main entrance is situated on Porterfield Road just off the A741 which is the main arterial route from the M8. The development site has prominent frontage to Glasgow Airport and is situated close to the new bridge which will provide direct access to the airport, the J28 of the M8 and Glasgow Airport Investment Area via Wright Street from Q1 2021.



J27 M8	3 mins
Glasgow	14 mins
Edinburgh	50 mins
Carlisle	1 hr 37 mins
Aberdeen	2 hrs 46 mins
Manchester	3 hrs 41 mins



King George V Dock	5 mins
Grangemouth Freight Hub	30 mins
Eurocentral Freight Terminal	30 mins
Rosyth Container Terminal	37 mins



Glasgow Airport	5 mins
Edinburgh Airport	50 mins

FURTHER INFORMATION

Further information, plans and specifications are available on a bespoke basis through our joint sole agents.



Andrew McCracken
andrew.d.mccracken@eu.jll.com

Michael Brown
michael.brown@eu.jll.com



0141 226 1000
www.colliers.com/uk/industrial

Iain Davidson
iain.Davidson@colliers.com

Colin McManus
Colin.McManus@colliers.com