



## Basement

Glen House, Crossways Road, Hindhead, GU26 6HG

**Self contained unit. Might suit personal trainer, photographer etc. Alternative uses considered.**

**450 sq ft**  
(41.81 sq m)

- Town centre location
- W.C.
- Nearby parking

# Basement, Glen House, Crossways Road, Hindhead, GU26 6HG

## Summary

Available Size	450 sq ft
Rent	£750 per month
Business Rates	To be assessed.
Service Charge	N/A
VAT	Applicable
EPC Rating	Upon Enquiry

## Description

The available space comprises the basement of a town centre office building and benefits from its own entrance. The space is currently open plan with a W.C. to be installed and could suit a variety of uses including personal training, photography, storage etc.

There is ample parking available nearby and Grayshott centre provides a range of valuable amenities.

## Location

Glen House is located right in the centre of Grayshott and so enjoys good road connections to the surrounding area via the A3.

Grayshott itself is an attractive village on the Surrey/Hampshire border, approximately 4 miles from Haslemere. The Devil's Punch Bowl Area of Outstanding Natural Beauty.

## Accommodation

The accommodation comprises the following areas:

Name	sq ft	sq m	Availability
Basement	450	41.81	Available
<b>Total</b>	<b>450</b>	<b>41.81</b>	

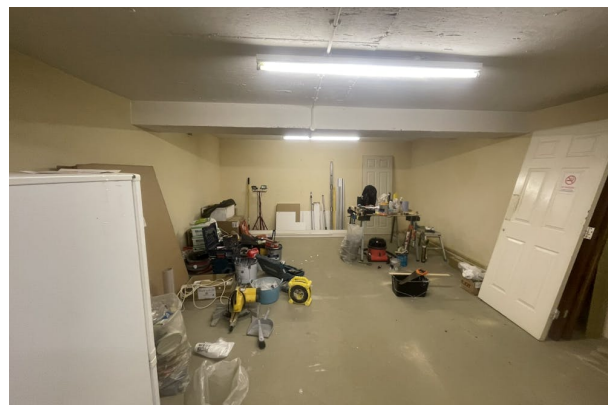
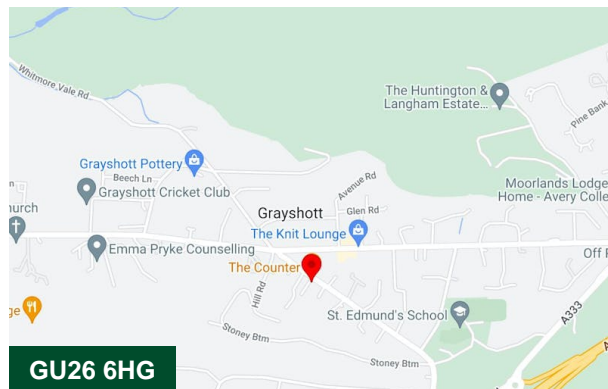
## Viewings

Strictly by appointment with the sole agent.

Derwent Hillside - Matthew Seary - 07950 464618 - matthew@derwenthillside.co.uk

## Terms

A new lease is available, direct from the landlord, for a term to be agreed.



## Viewing & Further Information



**Matthew Seary**

01256 578049 | 07950 464618

matthew@derwenthillside.co.uk