

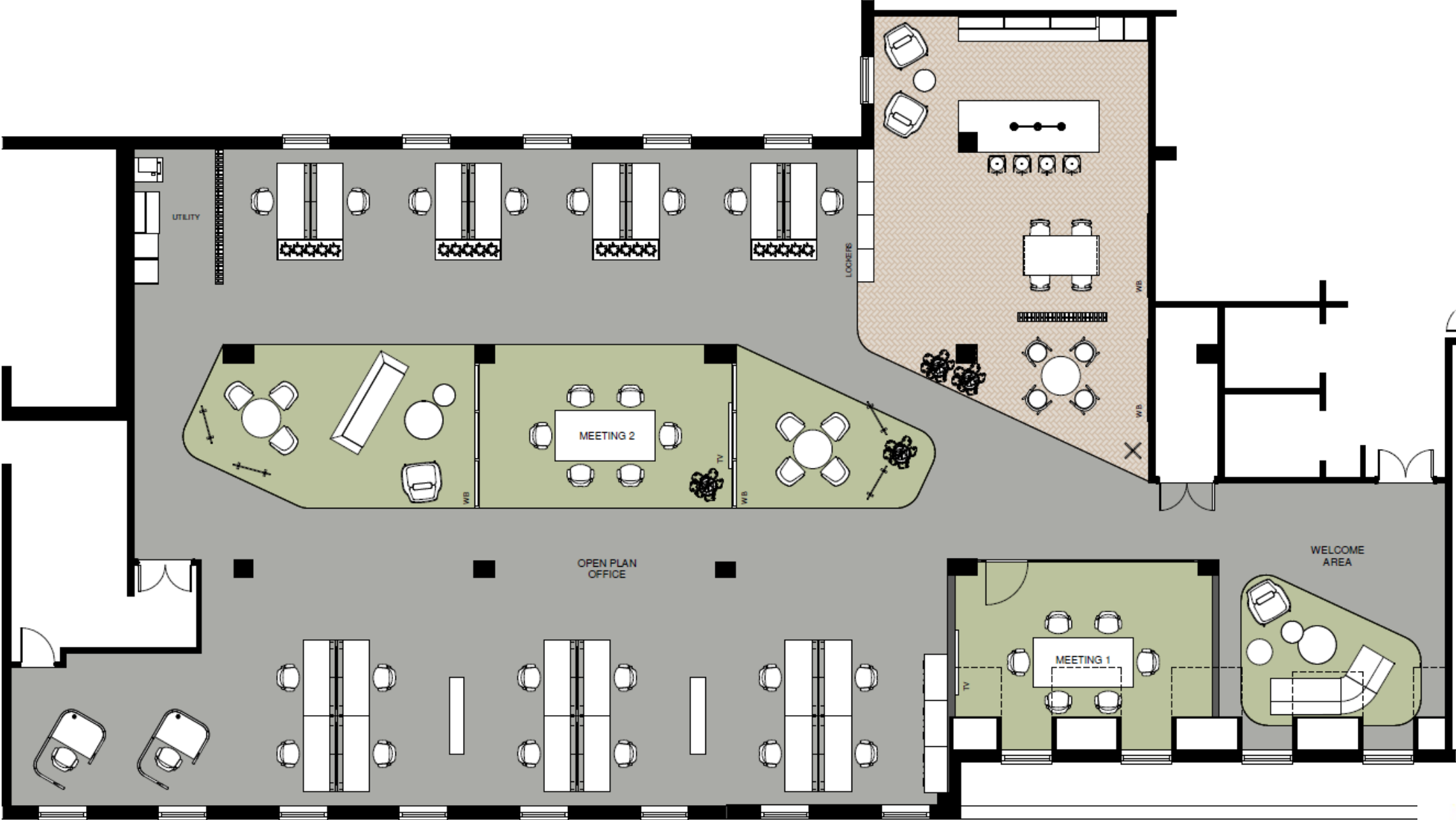


Level 3 - Hobart House – Concept Design Stage 1

Hobart House, 80 Hanover Street, Edinburgh

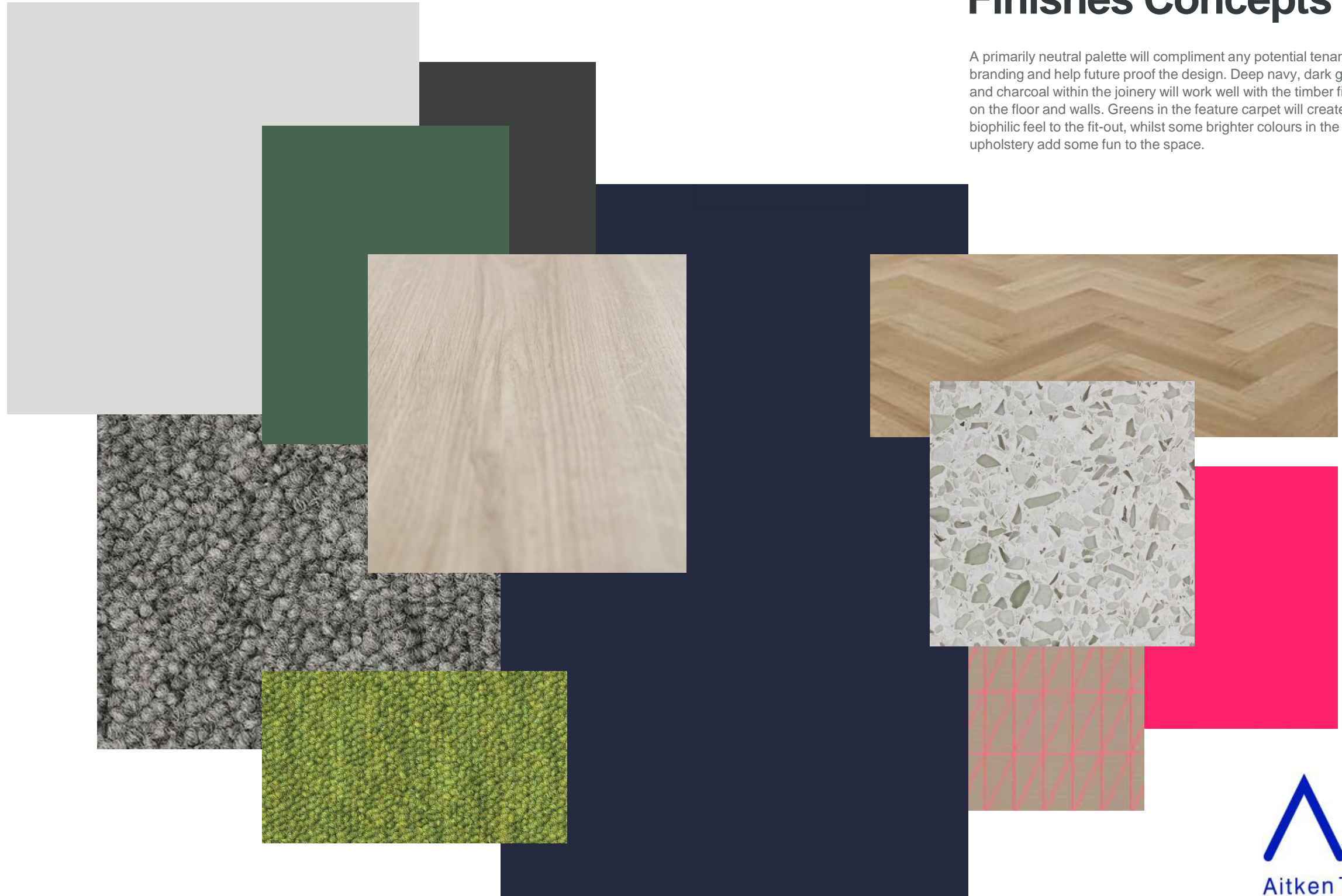
Rev 1 - 01/12/2020

Level 3 – Concept Floor Plan



Finishes Concepts

A primarily neutral palette will compliment any potential tenant's branding and help future proof the design. Deep navy, dark greens and charcoal within the joinery will work well with the timber finishes on the floor and walls. Greens in the feature carpet will create a biophilic feel to the fit-out, whilst some brighter colours in the upholstery add some fun to the space.



Welcome Area

The Welcome area replaces a traditional reception desk and waiting space. It creates an informal seating area to welcome guest and meet and greet prior to entering more formal meetings.... Could also act as a work touch down for guest too.



Informal Meeting areas

Flexible furniture solutions create dynamic team neighborhoods that are designed for spontaneity. It enables teams to reconfigure their space on demand, making it easy to shift from a brainstorm to a workshop, or from a daily stand-up to a project review.



Meeting Rooms

Traditional Meeting rooms could be improved on by selecting interesting furniture and finishes to create a warmer more relaxed feel. Providing work tools, such as whiteboard walls, pin board and advanced AV, would make the rooms far more usable.



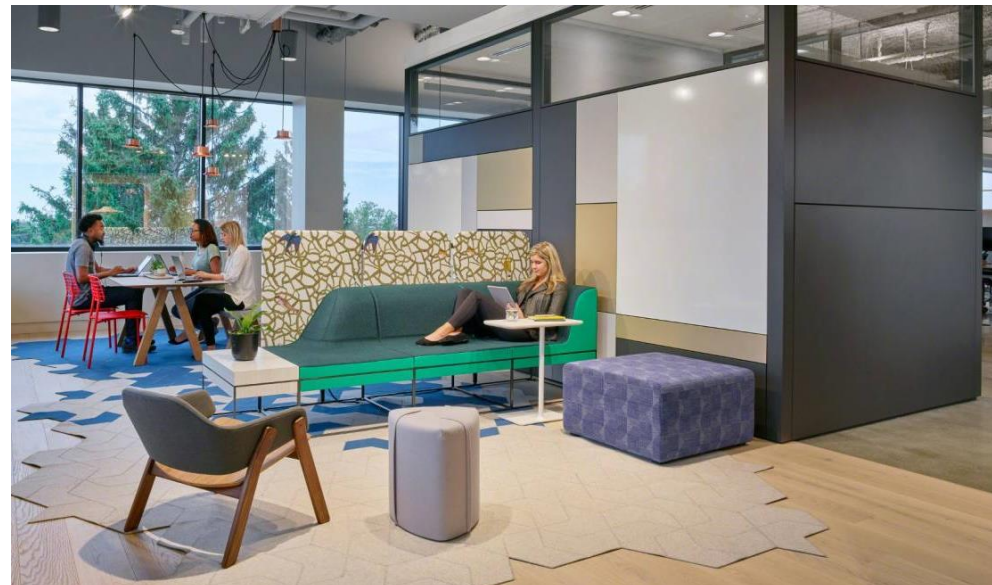
Joinery Concepts

The Kitchen/Breakout area really bring a focal point to the scheme, the new joinery elements will bring colour into the design, whilst the island bench will create a space for informal meetings and socializing



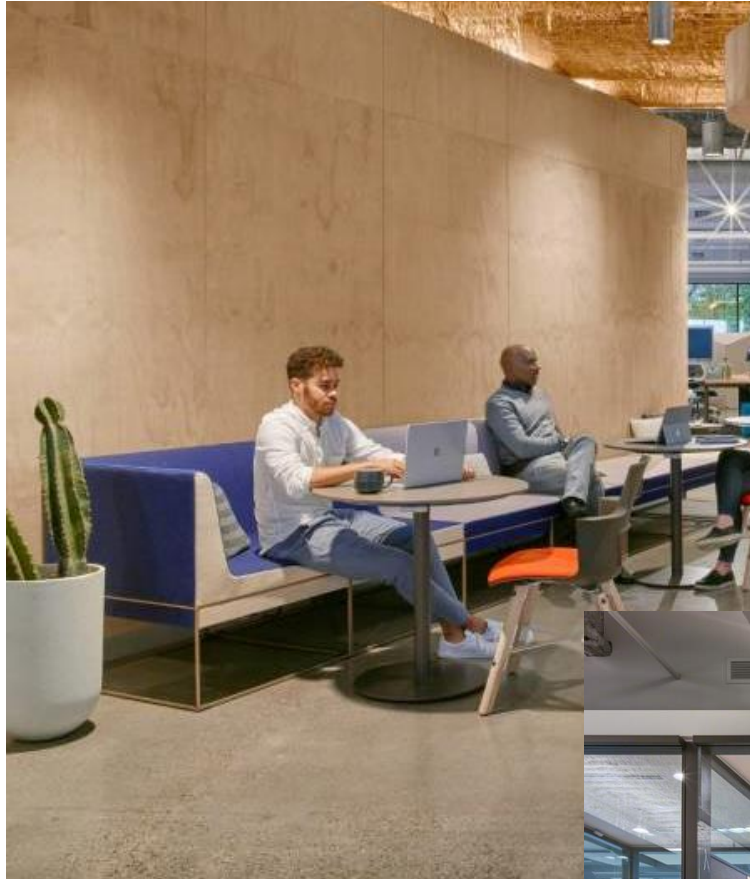
Furniture Concept

It's important to create spaces that support the way companies and employees *actually* collaborate together, this is the key to getting the space right. The correct furniture is imperative to support work postures, new workstyles and help create a sense of place within the open plan work areas.



Partitioning Concept

A black framed thin profile partitioning system will complement the existing ceiling. Cladding the solid partitioning in Plywood, is a great way to warm the space up.



Lighting Concept

Pendant lights will help define spaces and create a more domestic feel to the fit-out. The introduction of new sleek spotlights will give more flexibility and create a warmer lighting effect in the meeting/collaboration areas.



View 1 – Open Plan Office



View 2 – Open Plan Office



View 3 – Meeting Room



View 4 - Work Café / Lounge



View 4 - Work Café / Lounge



View 4 – Welcome / Reception

