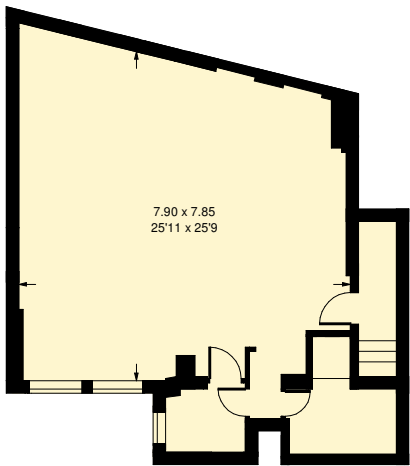
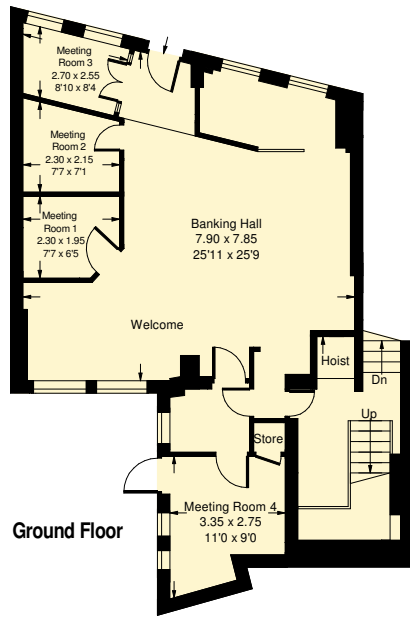


High Street, W3

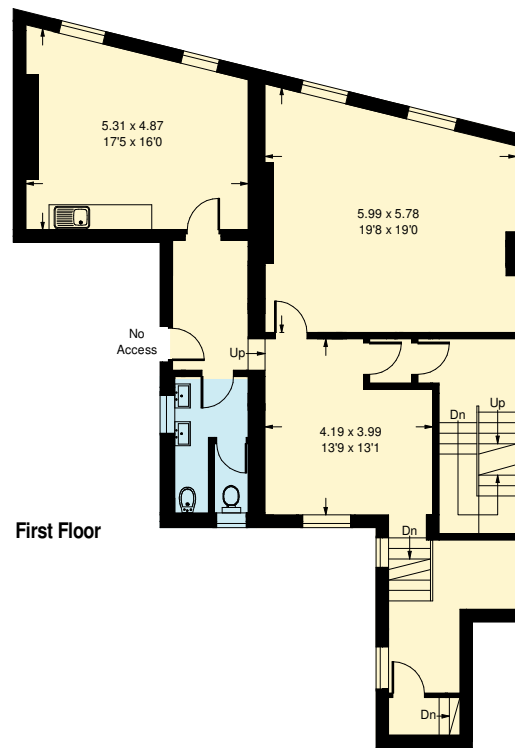
Approx Gross Internal Area = 404 sq m / 4349 sq ft
 Basement = 71.4 sq m / 768 sq ft
 Total = 475.4 sq m / 5117 sq ft



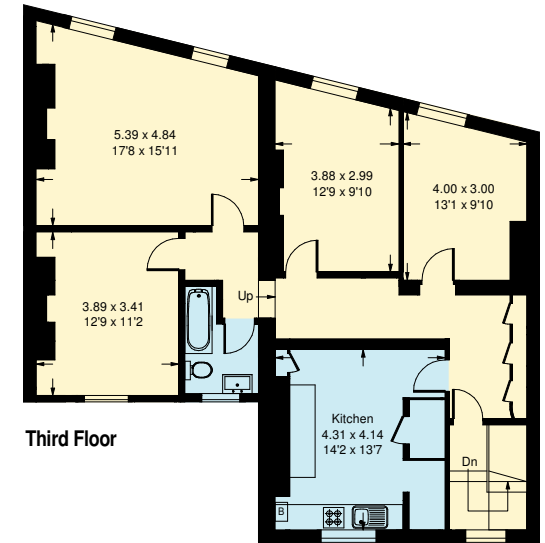
Basement



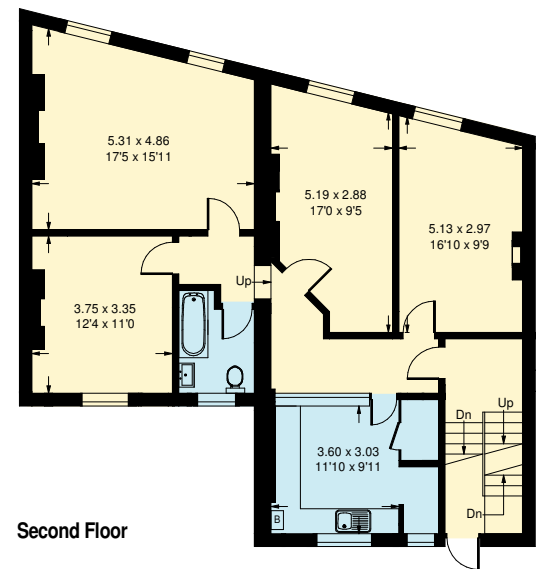
Ground Floor



First Floor



Third Floor



Second Floor

Whilst every attempt has been made to ensure the accuracy of the floor plan, measurements are approximate and not to scale.
 No guarantee is given on the total square footage of the property quoted on the plan. Figures given are for guidance.
 Plan is for illustration purposes only, not to be used for valuations.