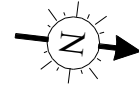


# SHEPHERD'S BUSH ROAD, W6

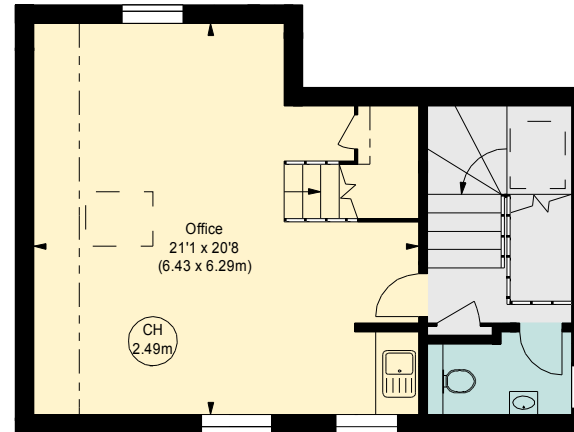
Approximate gross internal area

2570 sq ft / 238.75 sq m  
(Including Eaves Storage)

Eaves Storage  
128 sq ft / 11.89 sq m



Key :  
CH - Ceiling Height



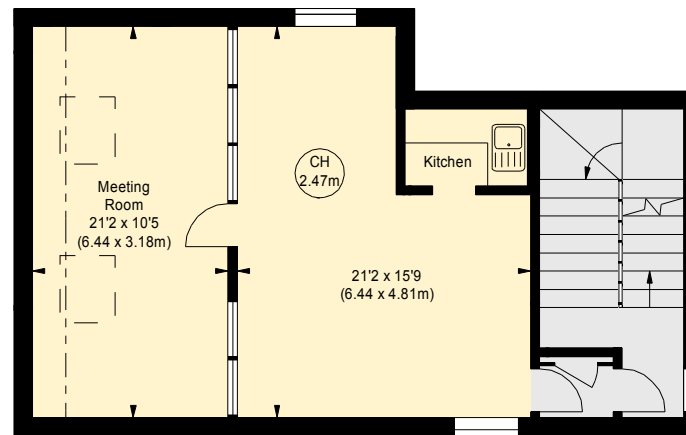
**SECOND FLOOR**

(538 sq ft.)



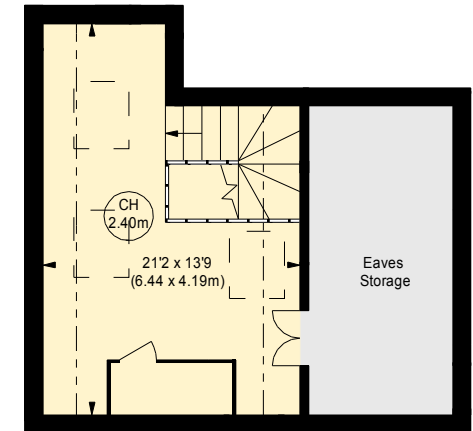
**GROUND FLOOR**

(973 sq ft.)



**FIRST FLOOR**

(665 sq ft.)



**THIRD FLOOR**

(266 sq ft.)

Although every attempt has been made to ensure accuracy, all measurements are approximate.  
This floorplan is for illustrative purposes only and not to scale.  
Measured in accordance with RICS Standards.