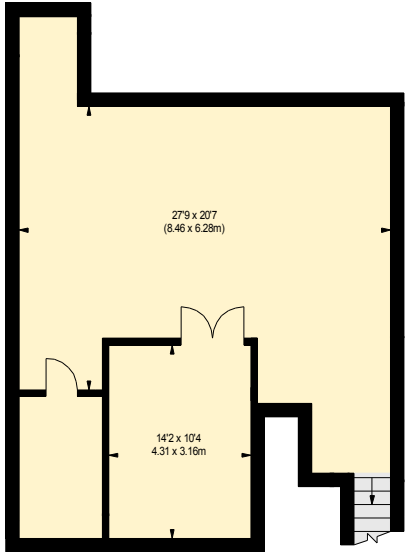
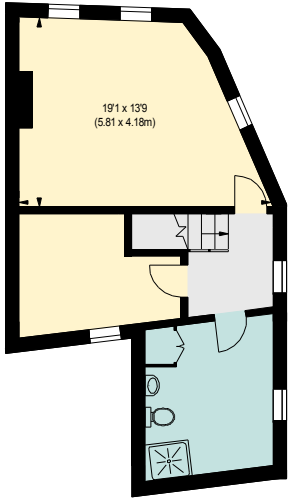


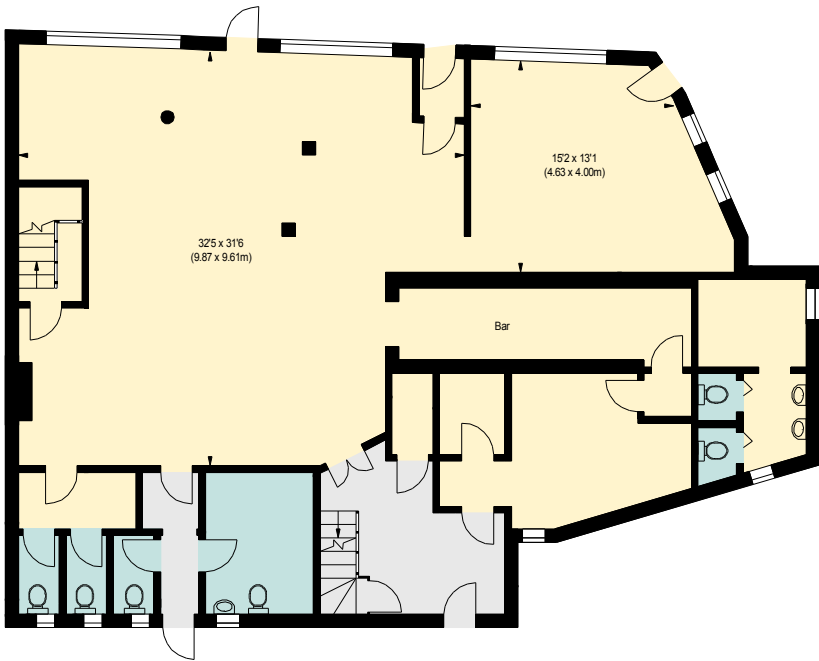
HERTFORD ROAD, EN3  
Approximate gross internal area  
5329 sq ft / 495.06 sq m



**BASEMENT**  
(822 sq ft.)



**SECOND FLOOR**  
(476 sq ft.)



**GROUND FLOOR**  
(2032 sq ft.)



**FIRST FLOOR**  
(1999 sq ft.)

Although every attempt has been made to ensure accuracy, all measurements are approximate.  
This floorplan is for illustrative purposes only and not to scale.  
Measured in accordance with RICS Standards.