



**150 Wandsworth Bridge Road**

London, SW6 2UH

**TO LET - Outstanding retail unit in the heart of Fulham.**

**672 sq ft**  
(62.43 sq m)

- Highly visible street frontage.
- Set in the heart of Fulham.
- Significant levels of passing trade.
- Extensive glass façade.
- Suitable for a variety of uses.

# 150 Wandsworth Bridge Road, London, SW6 2UH

## Summary

Available Size	672 sq ft
Rent	£25,000 per annum
Business Rates	Upon Enquiry
EPC Rating	Upon Enquiry

## Description

The property is split over ground and basement levels and offers an inviting frontage with an extensive showroom on the ground floor with the addition of backrooms and storage facilities at basement level. Having previously been used as a home improvement showroom, the property has plumbing to each level allowing for a variety of uses requiring only minor reconfiguration with a relatively short turnaround time.

Successful operators serving the area include a variety of cafés, restaurants and barber shops, ensuring the community is well served.

## Location

Wandsworth Bridge Road is a major commercial thoroughfare in Fulham with the premises set almost equidistant between the New King's Road junction and Wandsworth Bridge. The property is a short walk from the amenities of Parson's Green, Imperial Wharf and Fulham Broadway. The unit is well connected to the transport network offering nearby District Line, Overground and National Rail services. There are also several bus routes passing the premises connecting to Kensington and the West End alongside Putney and Wandsworth.

## Terms

Rent: £25,000 per annum.

Rateable Value: £19,000 per annum.

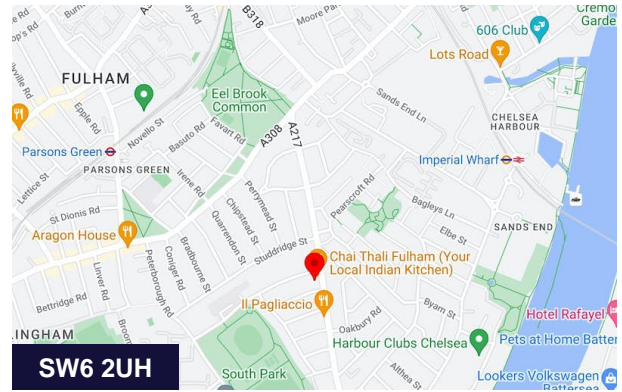
Rates Payable: c.£9,481 per annum.

Lease Terms: Negotiable.

EPC: TBC.

Possession: Full Vacant possession on completion of legal formalities.

Legal Costs: Each party is to pay their own legal costs.



## Viewing & Further Information



**Chris Ryan**

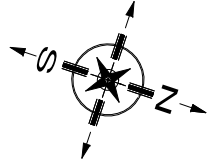
07385 413368 | 020 7355 0285

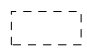
[crayan@winkworth.co.uk](mailto:crayan@winkworth.co.uk)

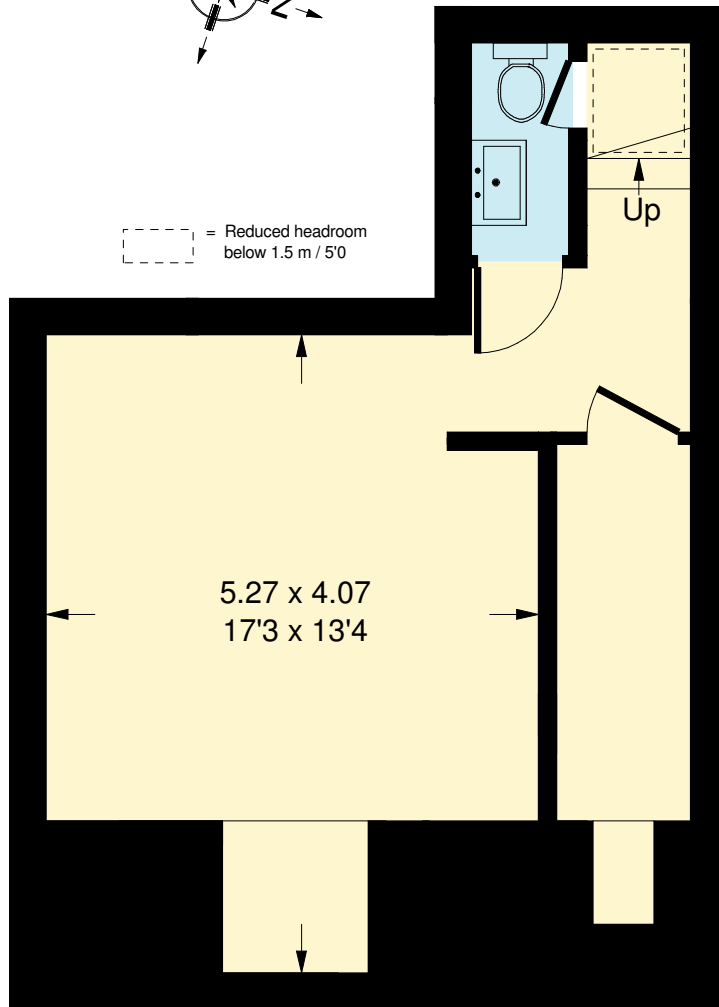
The above information contained within this email is sent subject to contract. These particulars are for general information only and do not constitute any part of an offer or contract. All statements contained therein are made without responsibility on the part of the vendors or lessors and are not to be relied upon as statement or representation of fact. Intending purchasers or lessees must satisfy themselves, by inspection, or otherwise, as to the correctness of each of the statements of dimensions contained in these particulars. Generated on 10/01/2024

# Wandsworth Bridge Road, SW6

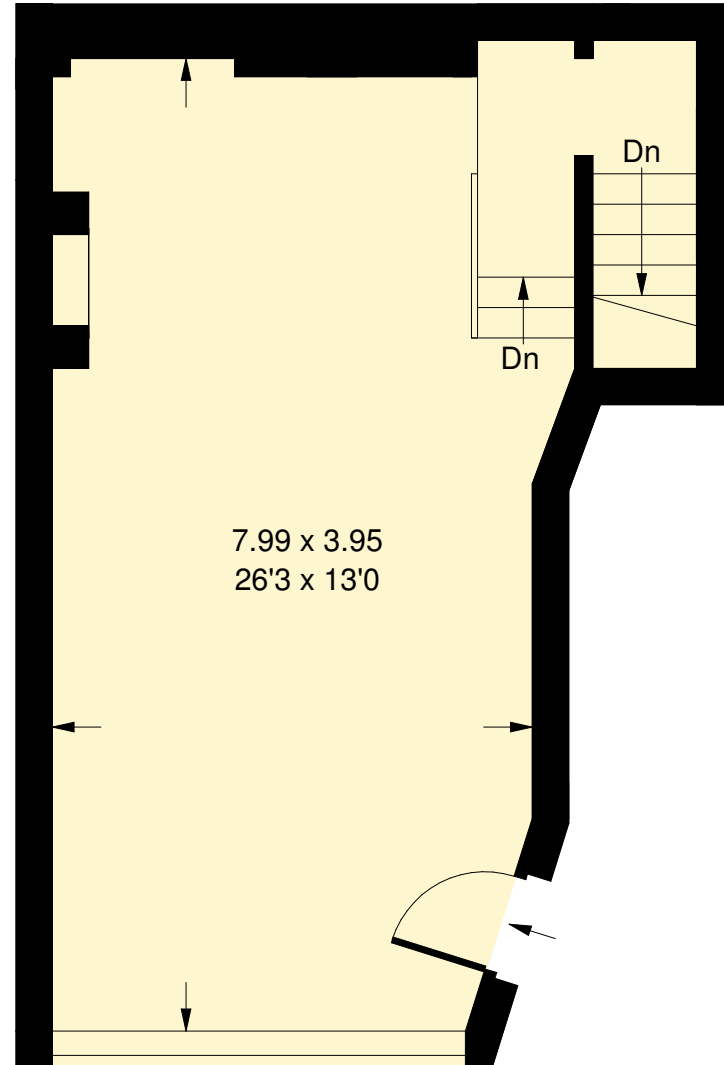
Approx. Gross Internal Area  
Ground Floor = 35 sq m / 377 sq ft  
Basement = 27.4 sq m / 295 sq ft  
Total = 62.4 sq m / 672 sq ft



 = Reduced headroom  
below 1.5 m / 5'0"



**Basement**



**Ground Floor**