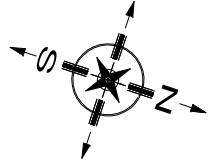
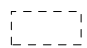
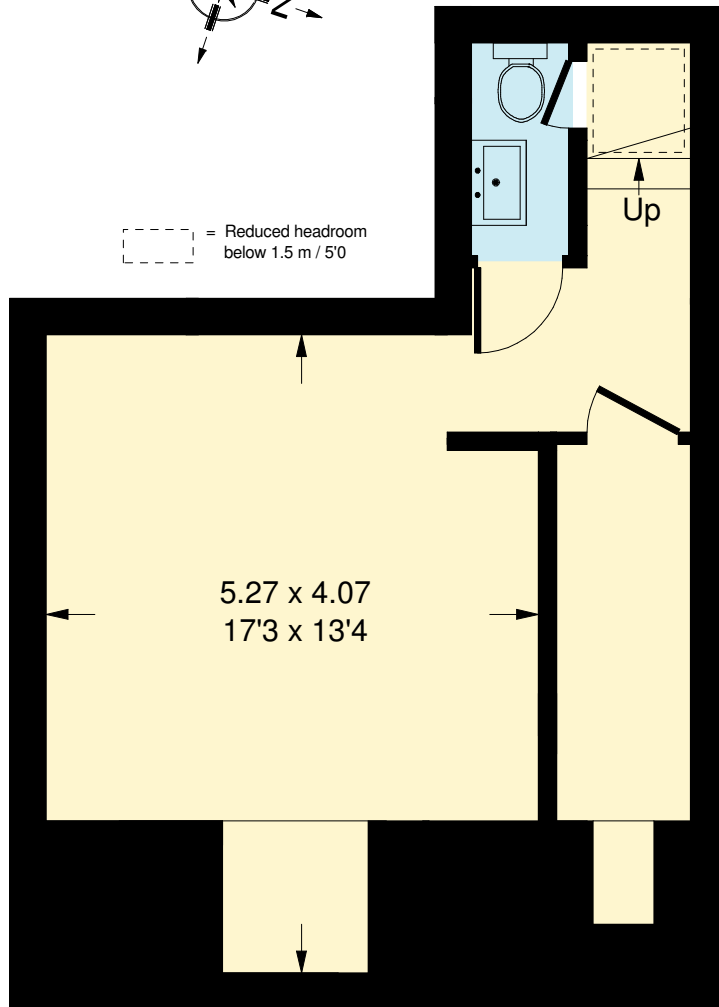


# Wandsworth Bridge Road, SW6

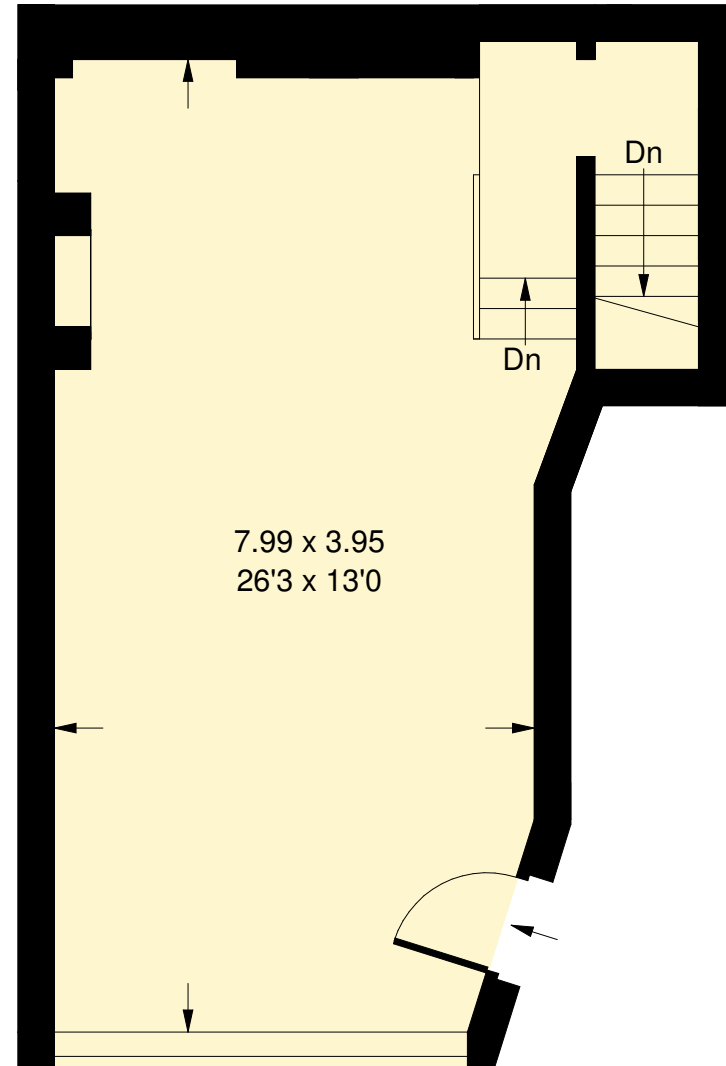
Approx. Gross Internal Area  
Ground Floor = 35 sq m / 377 sq ft  
Basement = 27.4 sq m / 295 sq ft  
Total = 62.4 sq m / 672 sq ft



 = Reduced headroom  
below 1.5 m / 5'0"



**Basement**



**Ground Floor**