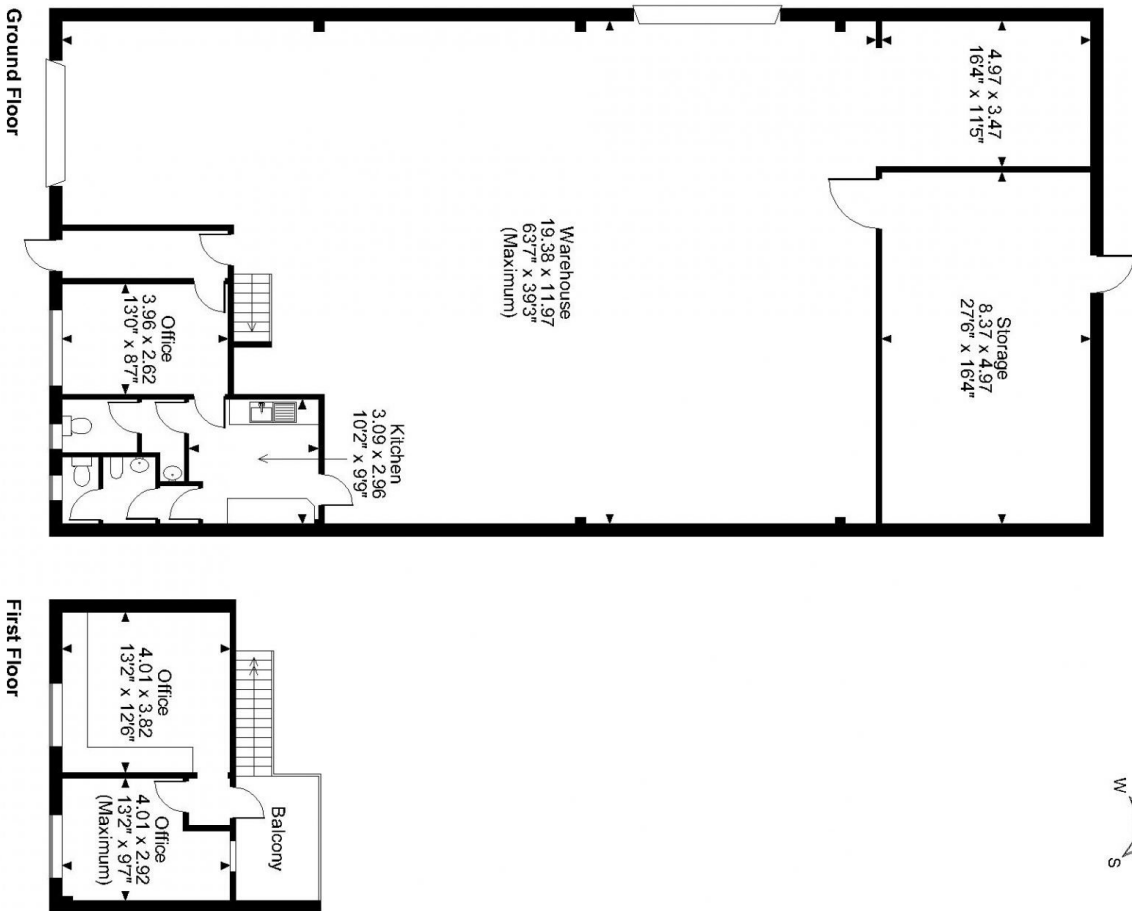
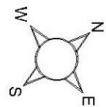


# Floor Plans

Unit 17 - Francis Way - 3332 sq ft | **Bowthorpe Park Industrial Estate**

 Bowthorpe Park Industrial Estate, Barnard Road, Norwich, NR5 9JA

**Francis Way, Bowthorpe Employment Area, Norwich**  
 Approximate Gross Internal Area  
 3450 Sq Ft/321 Sq M



**FOR ILLUSTRATIVE PURPOSES ONLY - NOT TO SCALE**

The position & size of doors, windows, appliances and other features are approximate only.

© ehouse. Unauthorised reproduction prohibited. Drawing ref. dig/8581125/DST