
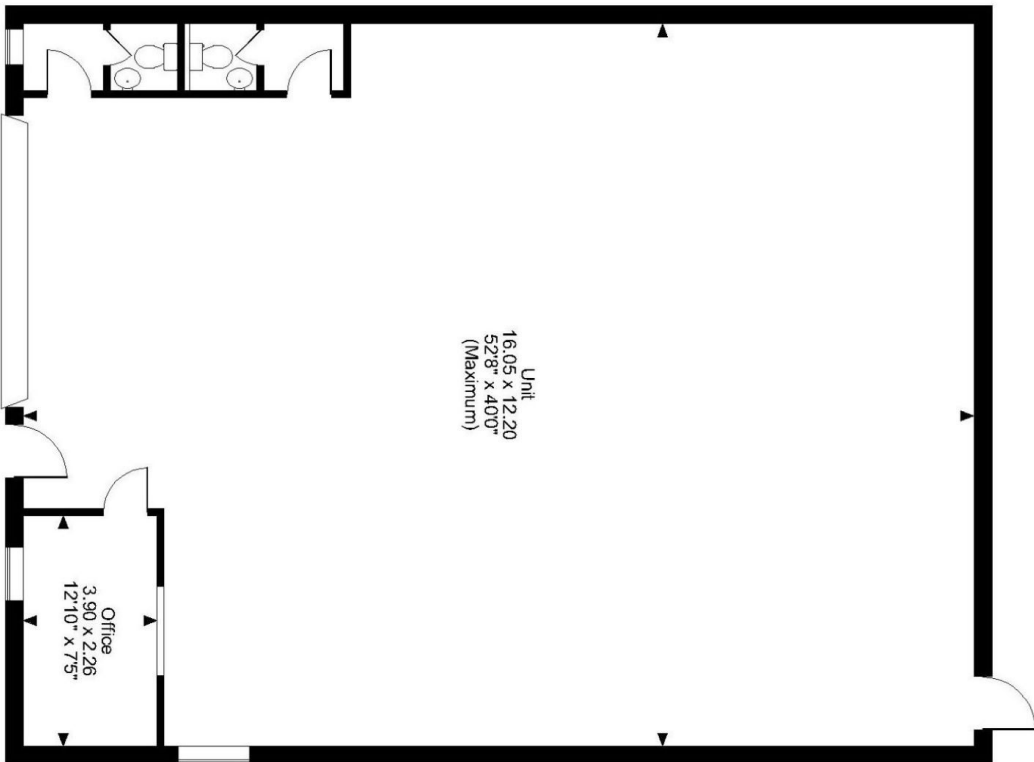
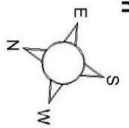


# Floor Plans

Unit 8 - 2113 sq ft | **Windmill Road Trading Estate**

 Windmill Road, Loughborough, LE11 1RA

**Windmill Road Trading Estate, Windmill Road, Loughborough**  
Approximate Gross Internal Area  
2108 Sq Ft/196 Sq M



**FOR ILLUSTRATIVE PURPOSES ONLY - NOT TO SCALE**

The position & size of doors, windows, appliances and other features are approximate only.  
© ehouse. Unauthorised reproduction prohibited. Drawing ref: dig18585548/SWA

[enquiries@industrials.co.uk](mailto:enquiries@industrials.co.uk)

**+440 808 169 7554**

 For more info please visit:  
[unit.info/UIP0101569](http://unit.info/UIP0101569)