
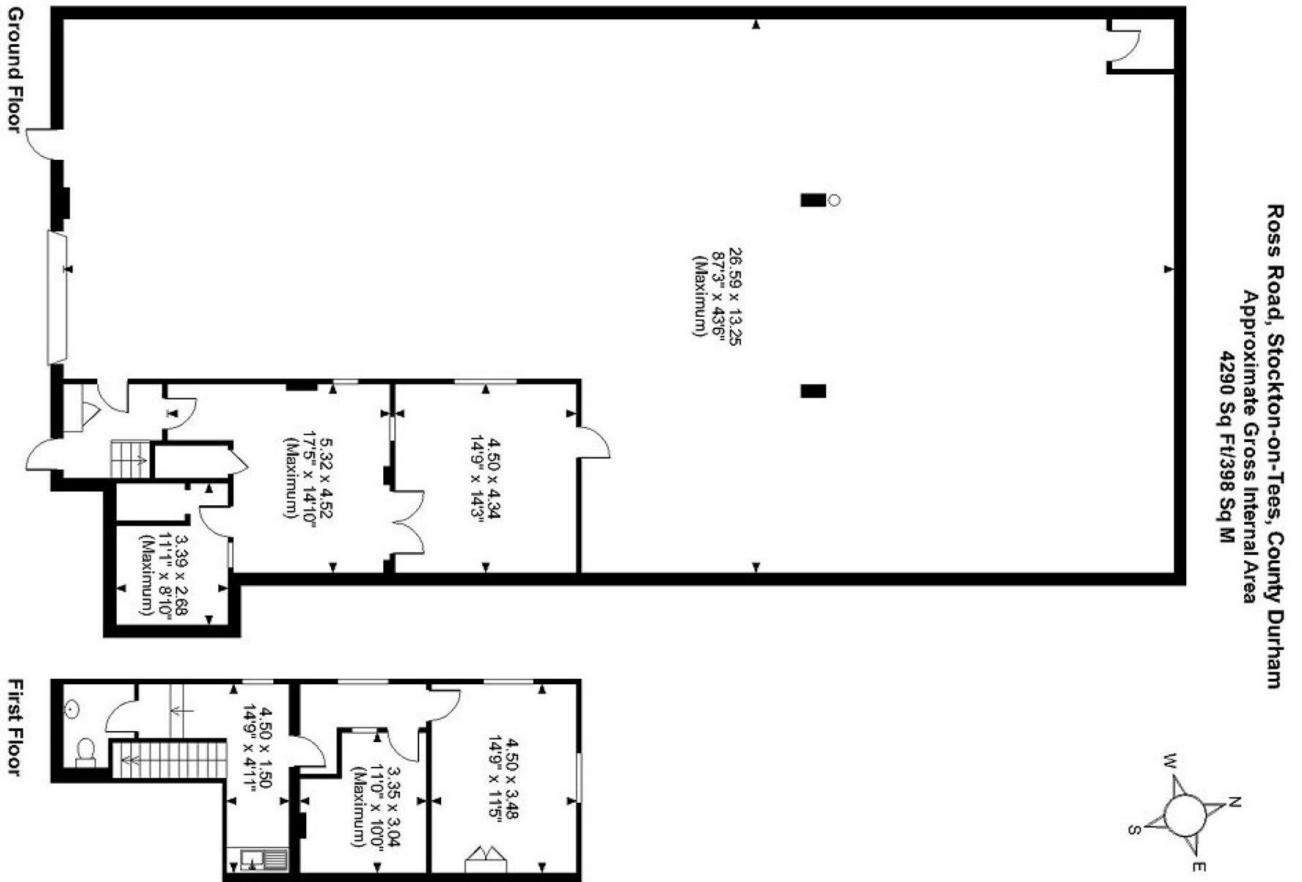


# Floor Plans

Unit 6 - 3836 sq ft | **Arkgrove Industrial Estate**

 Ross Road, Stockton-on-Tees, TS18 2NH



**FOR ILLUSTRATIVE PURPOSES ONLY - NOT TO SCALE**  
The position & size of doors, windows, appliances and other features are approximate only.  
© ehouse. Unauthorised reproduction prohibited. Drawing ref. dig/8594882/AMA