
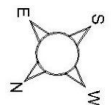
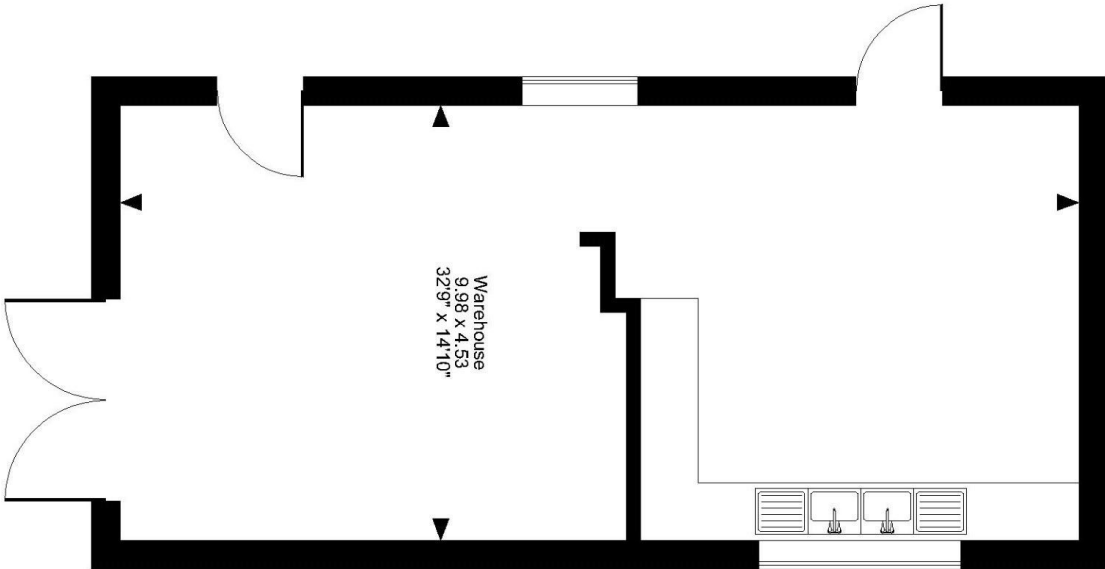


Floor Plans

Zone 2 - Unit 16 - 486 sq ft | **Bradley Hall Trading Estate**

 Bradley Hall Trading Estate, Standish, Wigan, WN6 0XQ

Bradley Hall, Trading Estate, Unit 16, Standish, Wigan
Approximate Gross Internal Area
487 Sq Ft/45 Sq M



FOR ILLUSTRATIVE PURPOSES ONLY - NOT TO SCALE
The position & size of doors, windows, appliances and other features are approximate only.
© ehouse. Unauthorised reproduction prohibited. Drawing ref. dig/8589456/PPP

enquiries@industrials.co.uk

+440 808 169 7554

 For more info please visit:
unit.info/UIP0101152