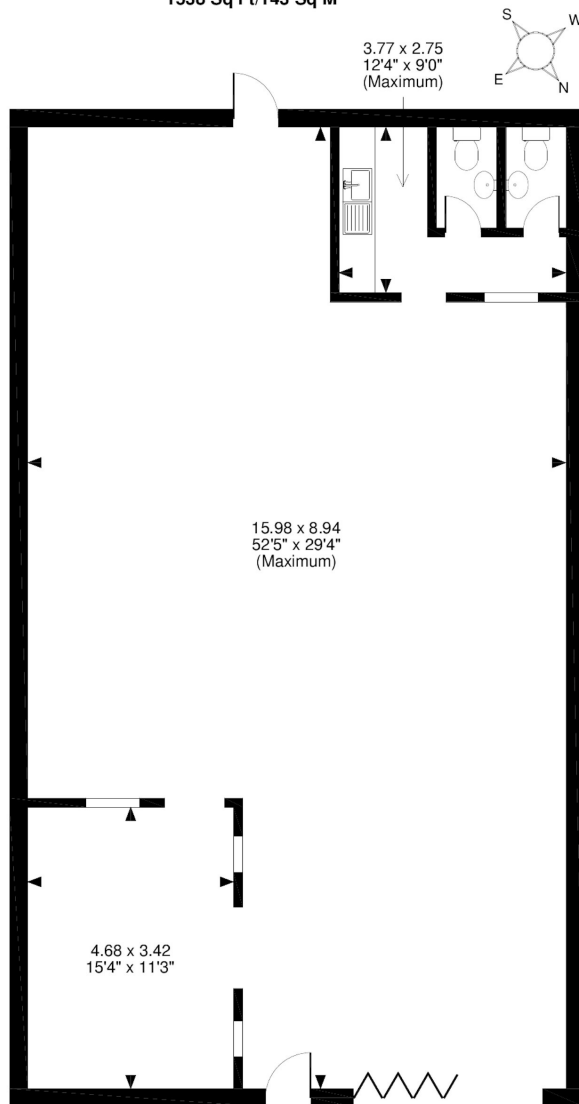


# Floor Plans

Unit E1 - 1466 sq ft | **Greenwood Court Industrial Estate**

 Cartmel Drive, Harlescott, Shrewsbury, SY1 3TB

**Unit E1, Ground Floor, Greenwood Court Industrial Estate, Shrewsbury**  
1538 Sq Ft/143 Sq M



**FOR ILLUSTRATIVE PURPOSES ONLY - NOT TO SCALE**  
The position & size of doors, windows, appliances and other features are approximate only.  
© ehouse. Unauthorised reproduction prohibited. Drawing ref. dig/8444443/WFF

[enquiries@industrials.co.uk](mailto:enquiries@industrials.co.uk)

 For more info please visit:  
[unit.info/UIP0100808](http://unit.info/UIP0100808)

**+440 808 169 7554**