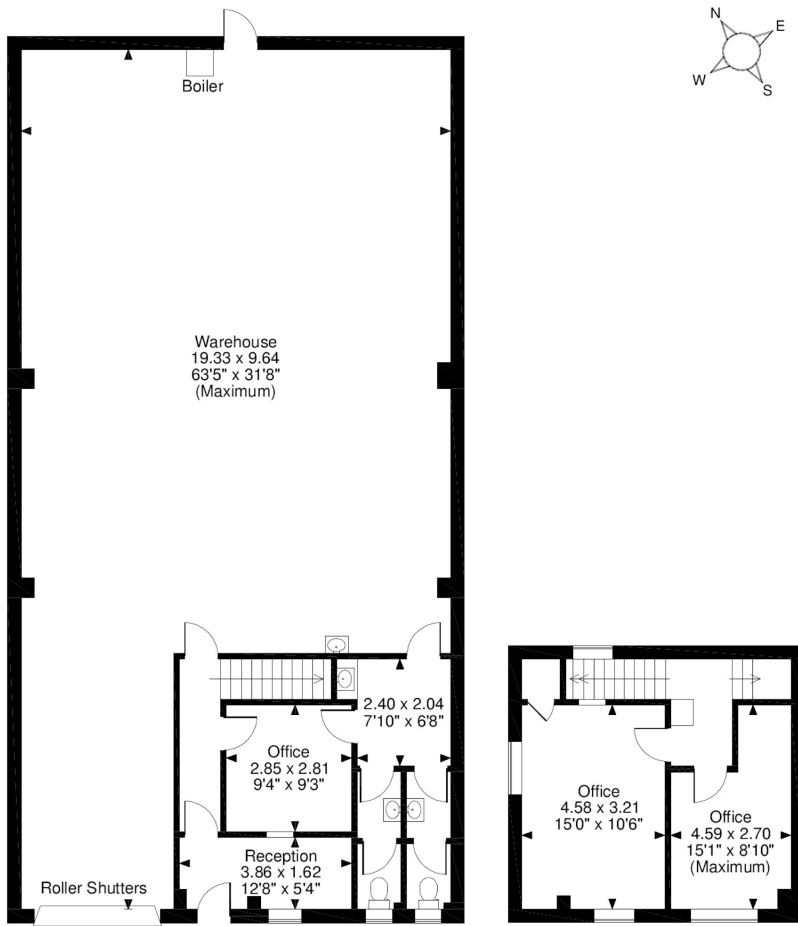


Floor Plans

Unit 24 - 2400 sq ft | **Davey Close Trade Park**

 Davey Close, Colchester, CO1 2XL

Unit 24, Ground Floor & First Floor, Davey Close, Trade Park, Colchester
2347 Sq Ft/218 Sq M



Ground Floor

FOR ILLUSTRATIVE PURPOSES ONLY - NOT TO SCALE
The position & size of doors, windows, appliances and other features are approximate only.
© ehouse. Unauthorised reproduction prohibited. Drawing ref. dig/8386774/RIB