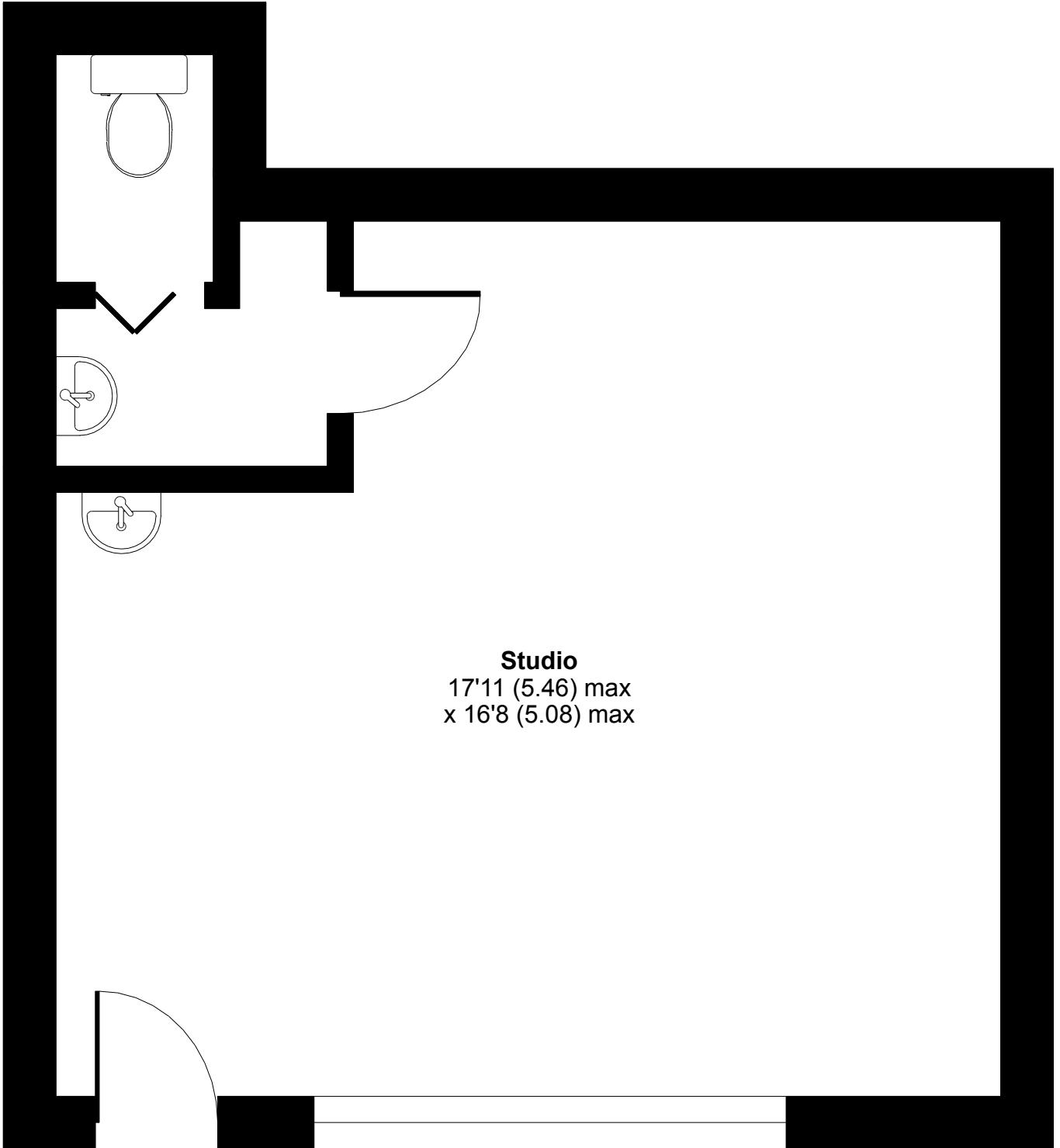


Highgate Road, London, NW5

Approximate Area = 318 sq ft / 29.5 sq m

For identification only - Not to scale



Studio
17'11 (5.46) max
x 16'8 (5.08) max

GROUND FLOOR



Floor plan produced in accordance with RICS Property Measurement Standards incorporating International Property Measurement Standards (IPMS2 Residential). © n1che.com 2023. Produced for Forest Real Estate Limited. REF: 1061791