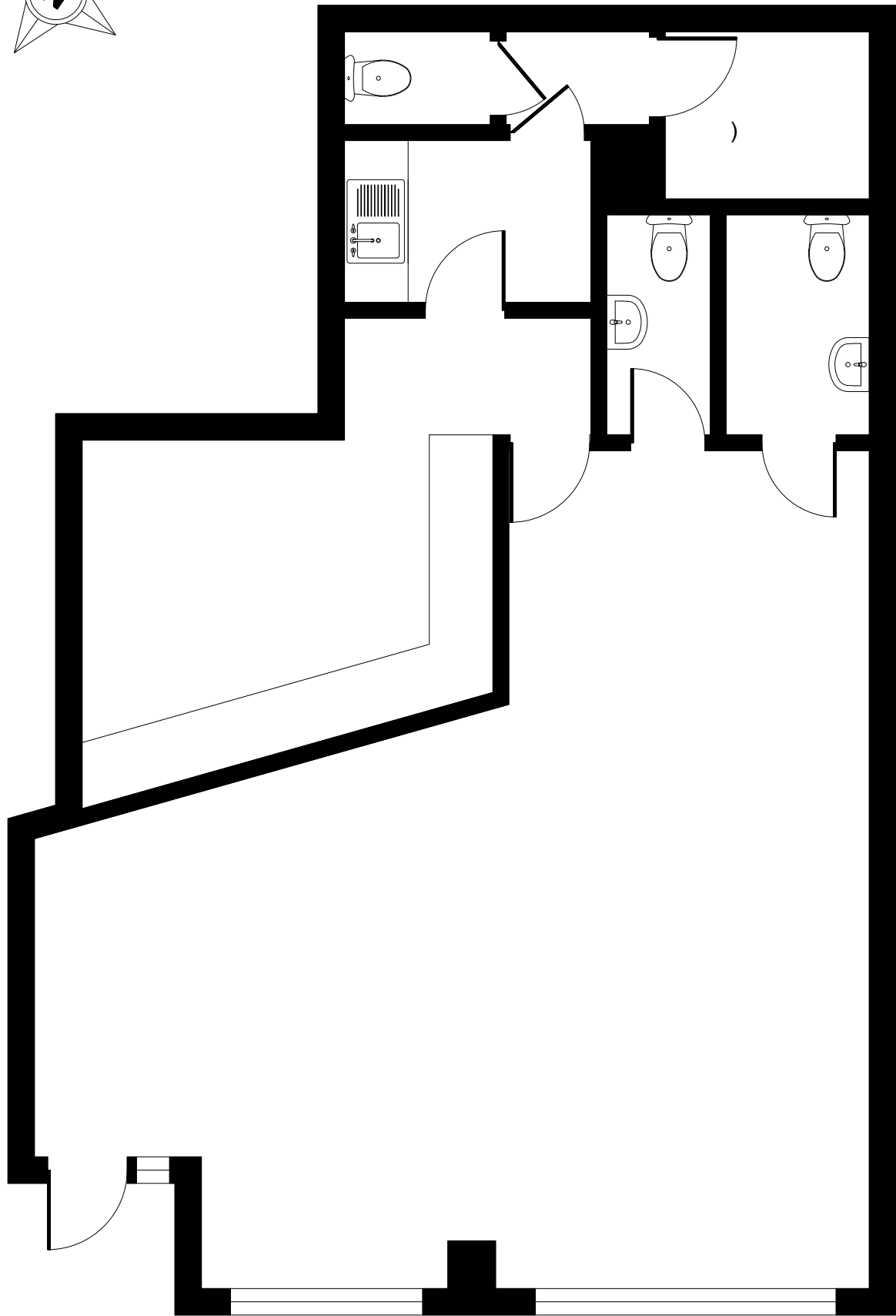


# Allitsen Road, London, NW8

Approximate Area = 872 sq ft / 81 sq m

For identification only - Not to scale



**GROUND FLOOR**



Floor plan produced in accordance with RICS Property Measurement Standards incorporating International Property Measurement Standards (IPMS2 Residential). © n1che.com 2023. Produced for Forest Real Estate Limited. REF: 1016636