

Great Portland Street


Approximate Gross Internal Area = 2371 sq ft / 220.4 sq m

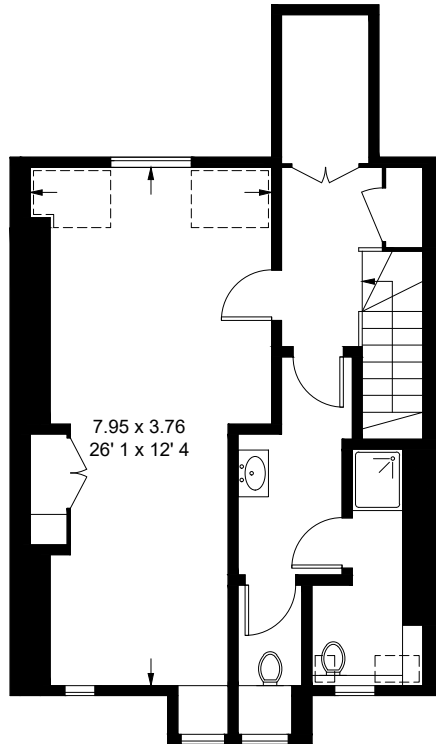
(Excluding Reduced Headroom)

Reduced Headroom = 25 sq ft / 2.3 sq m

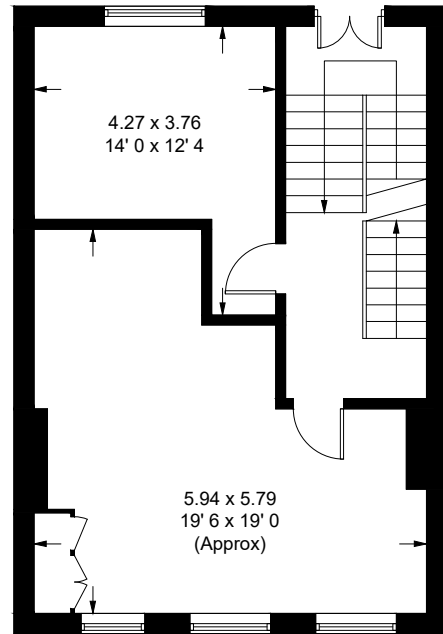
Total = 2396 sq ft / 222.7 sq m



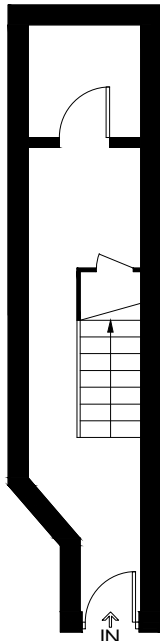
 = Reduced headroom below 1.5m / 5'0"



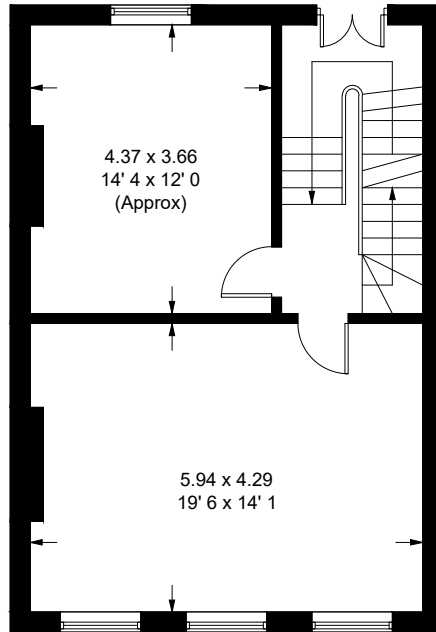
Fourth Floor
535 sq ft / 49.7 sq m
(Including Reduced Headroom)



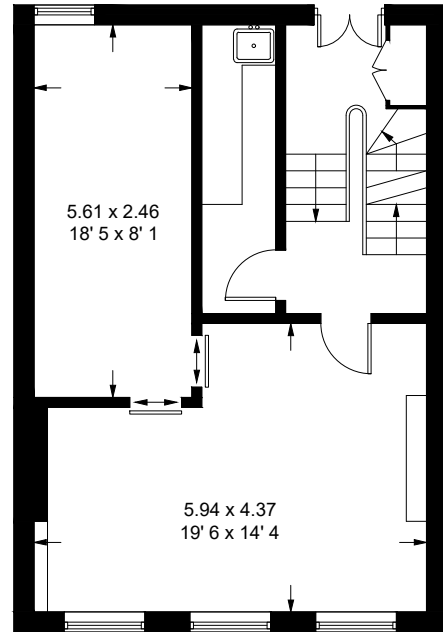
Third Floor
570 sq ft / 53 sq m



Ground Floor
151 sq ft / 14 sq m



First Floor
570 sq ft / 53 sq m



Second Floor
570 sq ft / 53 sq m

This plan is not to scale and must be used as layout guidance only. All measurements and areas are approximate and should not be relied upon to provide accurate information. This plan must not be relied upon when making property valuations, design considerations or any other such relevant decisions. We accept no responsibility or liability (whether in contract, tort or otherwise) in relation to any loss whatsoever arising from or in connection with any use of this plan or the adequacy, accuracy or completeness of it or any information within it.