

UNIT 20 & 21

MITCHAM INDUSTRIAL ESTATE



PRIME LAST MILE LOGISTICS AND
DISTRIBUTION UNITS TO LET
21,906 - 50,732 SQ FT
AVAILABLE U20 - Q1 2024 & U21 - Q3 2024

LOCAL OCCUPIERS

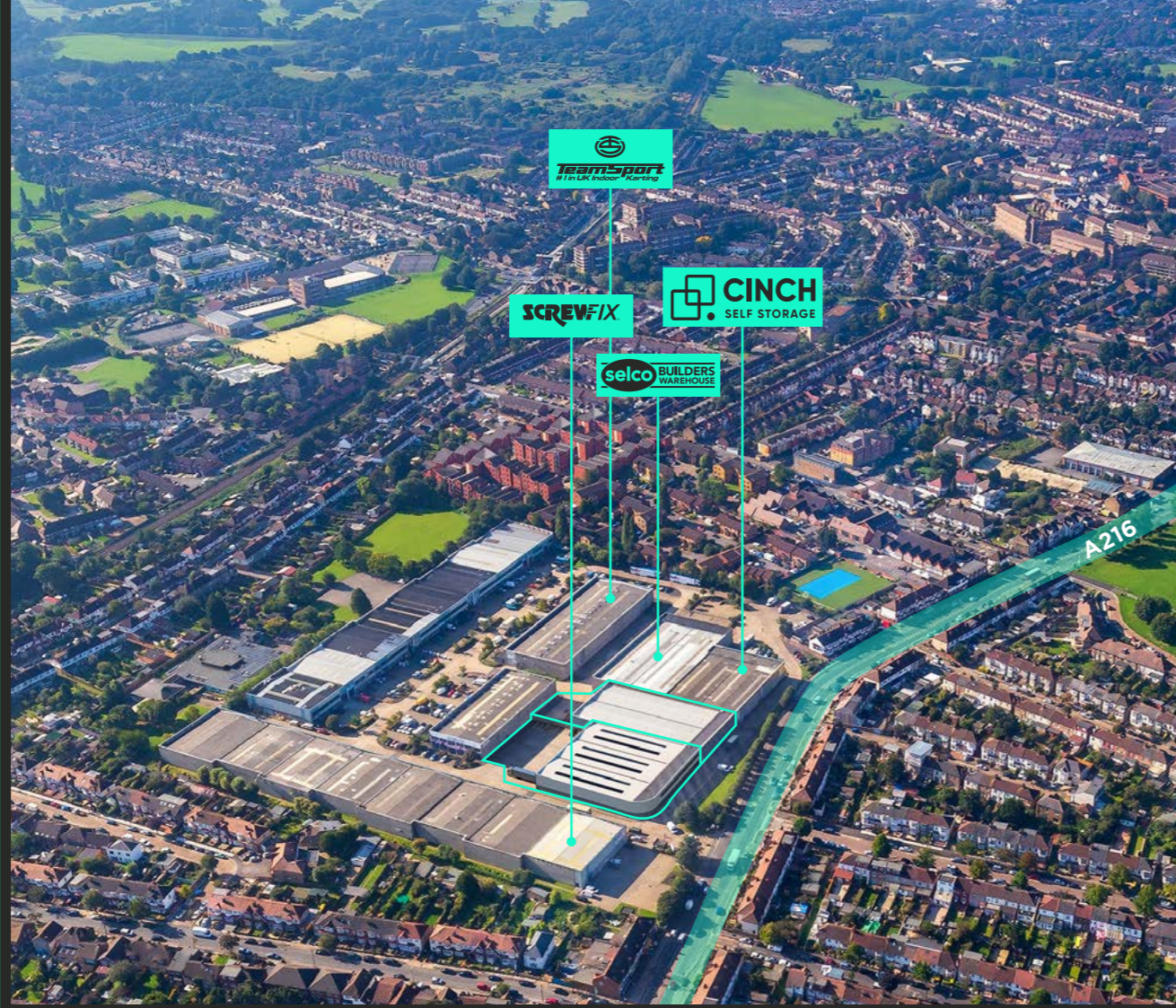
SCREWFIX

selco BUILDERS WAREHOUSE

CINCH SELF STORAGE

TeamSport #1 in UK Indoor Karting

Janson Beauty



21,906 - 50,732 SQ FT PRIME URBAN LOGISTICS UNITS

- 2 - 5 ROLLER SHUTTER LOADING DOORS
- 5.25M EAVES HEIGHT
- UNRESTRICTED 24 HOUR USE
- 17 - 29M YARD DEPTH
- EPC TARGET B
- GENEROUS CAR PARKING
- INTEGRAL OFFICE ACCOMMODATION
- SECURE YARD
- 3 PHASE POWER



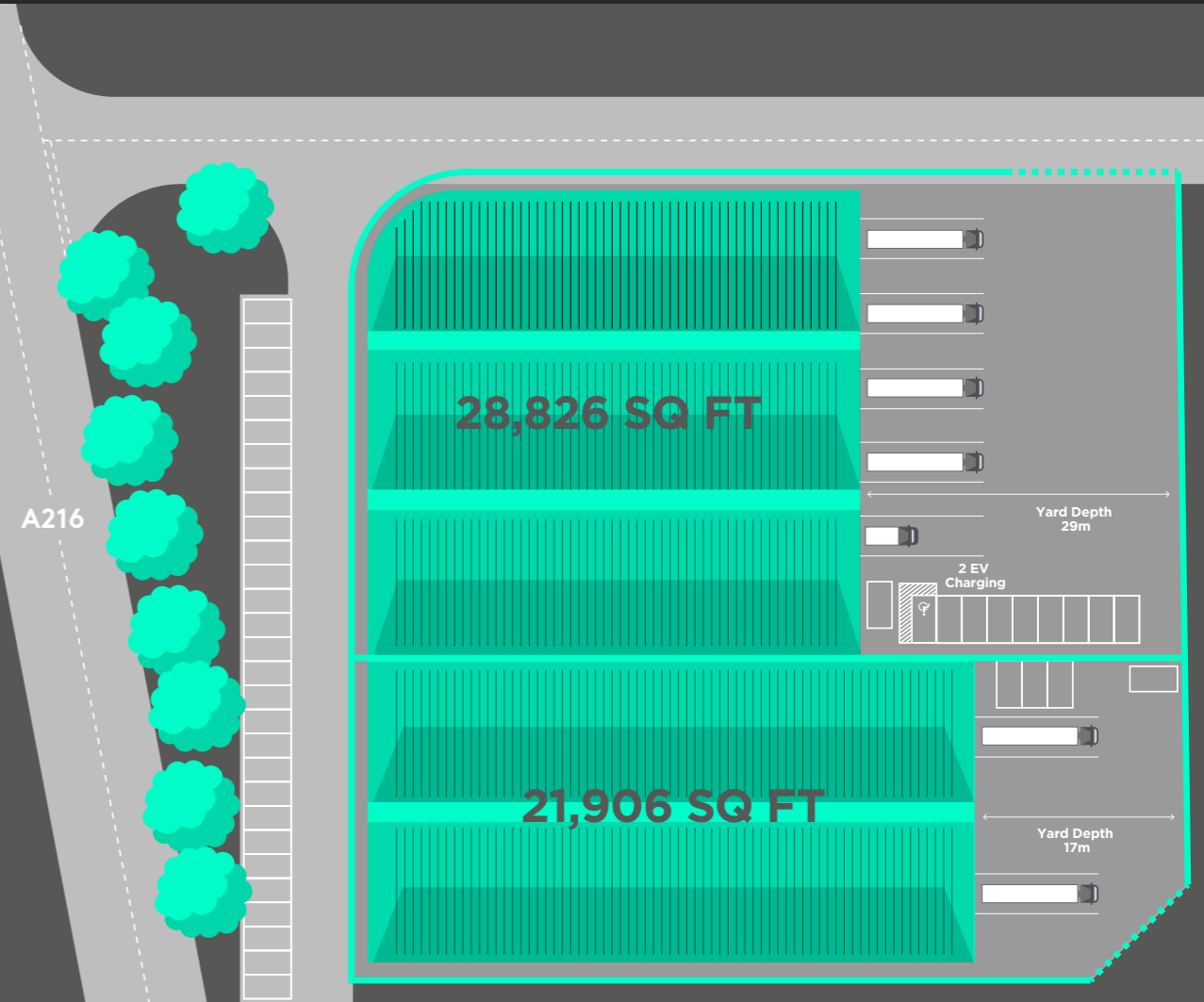
DESCRIPTION

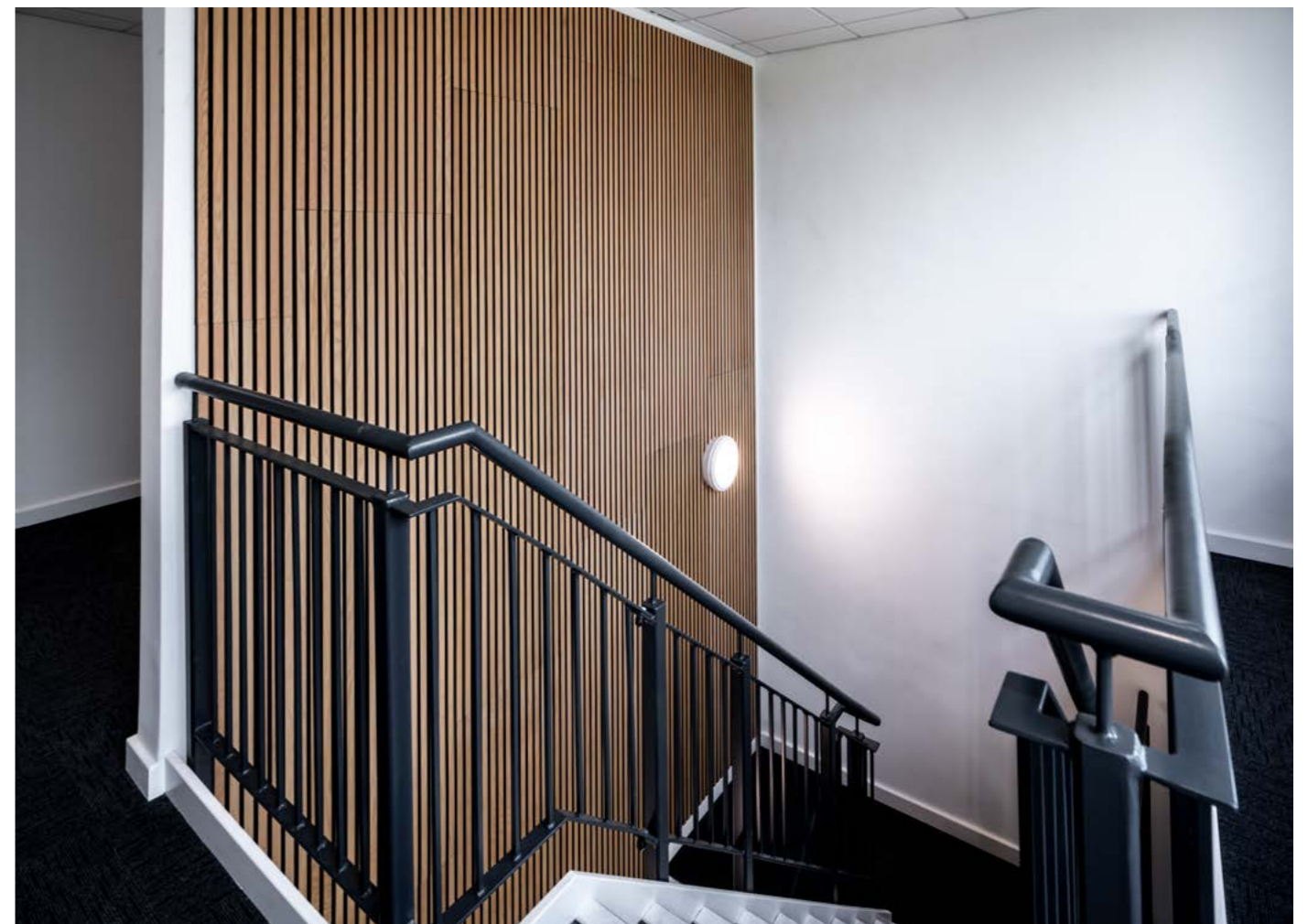
The properties are prominently located at the front of the estate and are of portal frame construction benefitting from an eaves height of 5.25m rising to 5.9m to the ridge. Unit 21 has 2 roller shutter doors and unit 20, 5 roller shutter doors.

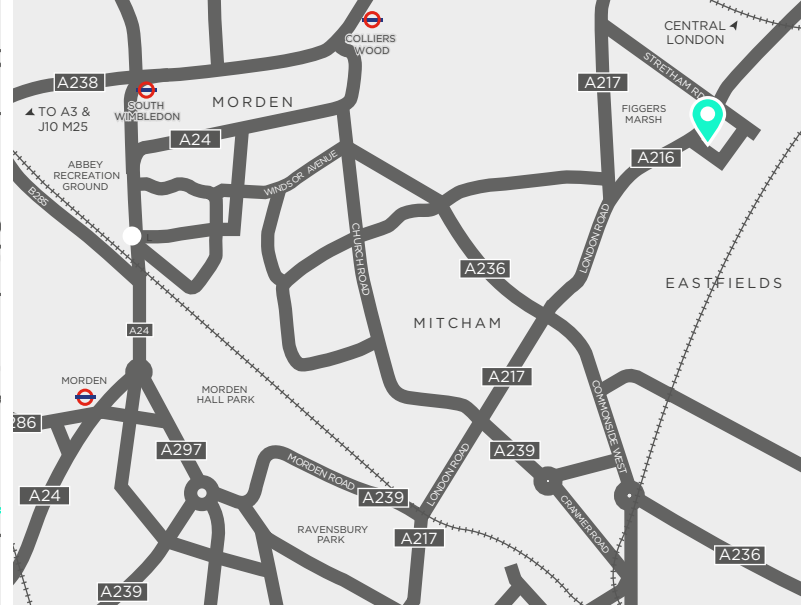
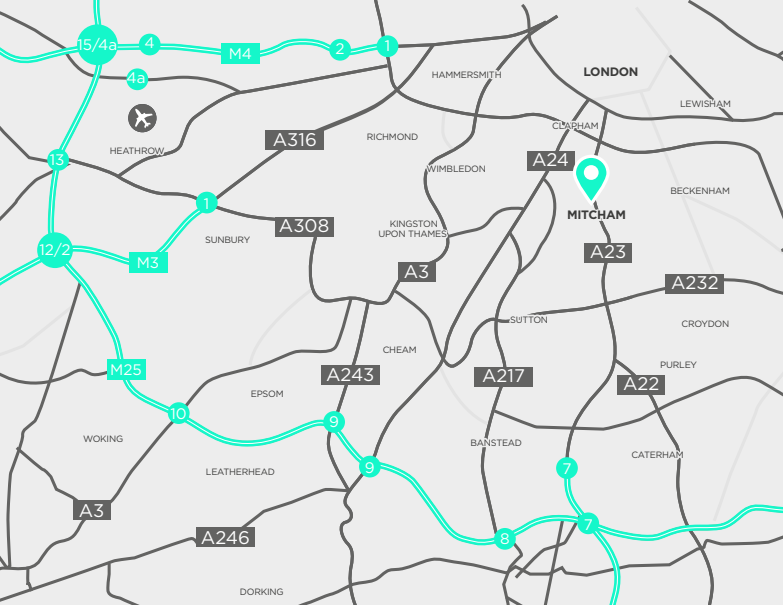
ACCOMMODATION

UNIT 20*	SQ FT	SQ M
WAREHOUSE	23,767	2,208
FF OFFICES	5,059	470
TOTAL GEA	28,826	2,678
UNIT 21*	SQ FT	SQ M
WAREHOUSE	19,669	1,827
FF OFFICES	2,237	208
TOTAL GEA	21,906	2,035

*Units can be let individually or combined







LOCATION

The properties are located on the Mitcham Industrial Estate, on Streatham Road in Mitcham. Mitcham is located 6 miles south of Central London and 4 miles north-west of Croydon in the London Borough of Merton. The site benefits from excellent transport links with two of south London's principal trunk roads, the A23 and A24, within close proximity providing direct access to central London and the national motorway network via junction 7 of the M25 motorway approximately 11.5 miles to the south.

ROAD	MILES	MINS
A205	3.9	12
A3	4.5	14
Central London	7.8	22
M25 J8	12.6	24
M3 J1	14.3	35
M4 J3	16.0	35

EPC
Target B.

RENT
Upon Application.

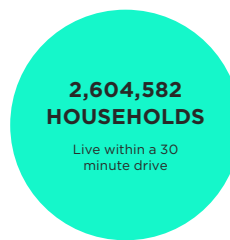
COSTS
Each party to bear their own legal costs in this transaction.

TERMS
The units are available by way of new full repairing and insuring leases on terms to be agreed.

RAIL	MILES	MINS
Mitcham Junction	1.9	6
London Victoria	7.2	22
London Bridge	7.8	28

PORTS	MILES	MINS
DP World	35.7	1hr 5
Dover Port	78.5	1 hr 40
Southampton Docks	79.4	1hr 40

AIRPORTS	MILES	MINS
Gatwick	20.6	30
Heathrow	18.4	35



*Source: Google Maps, Smappen

For further information or to arrange an inspection please contact the agents:

Alex Gale
agale@shw.co.uk
07768 500 304

Robert Bradley-Smith
robert.bradley-smith@altusgroup.com
07469 854 799

IMPORTANT Notice Particulars: These particulars are not an offer or contract, nor part of one. You should not rely on statements by SHW in the particulars or by word of mouth or in writing ("information") as being factually accurate about the property, its condition or its value. Neither SHW nor any joint agent has any authority to make any representations about the property, and accordingly any information given is entirely without responsibility on the part of the agents, seller(s) or lessor(s). Photos etc: The photographs show only certain parts of the property as they appeared at the time they were taken. Areas, measurements and distances given are approximate only. Regulations etc: Any reference to alterations to, or use of, any part of the property does not mean that any necessary planning, building regulations or other consent has been obtained. A buyer or lessee must find out by inspection or in other ways that these matters have been properly dealt with and that all information is correct. VAT: The VAT position relating to the property may change without notice. March 2024.