

PRIORY HOUSE

HIGH STREET
REIGATE



Contemporary Refurbished
Office Available To Let
Suite B (2nd Floor) – 1,160 sq ft
Suite C (2nd Floor) – 1,377 sq ft

Prory House is prominently positioned in the centre of Reigate. The building has undergone a comprehensive refurbishment to offer light, flexible, office suites with modern, contemporary finishes.

LOCATION

Reigate is an historic market town, with an abundance of character. The town has a variety of upmarket shops, cafes and restaurants and Prory House is ideally situated to these facilities and the picturesque Prory Park.

Reigate is a strategic office location with immediate access to the national motorway network via J8 of the M25 to the North and Gatwick Airport to the South.

Reigate benefits from direct trains to London Victoria, Gatwick Airport, Redhill and Reading.

By Road

REDHILL	1.5 miles	4 mins
M25 J8	2.5 miles	6 mins
GATWICK AIRPORT	8 miles	12 mins
CRAWLEY	10 miles	22 mins
CROYDON	15 miles	38 mins
CENTRAL LONDON	27 miles	55 mins
HEATHROW AIRPORT	29 miles	35 mins

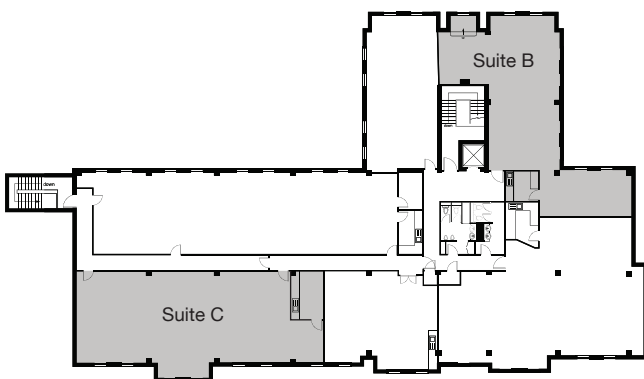
By Rail

REIGATE TO REDHILL	4 mins
REIGATE TO GUILDFORD	23 mins
REIGATE TO LONDON BRIDGE	40 mins
REIGATE TO LONDON VICTORIA	50 mins
REIGATE TO GATWICK AIRPORT	16 mins

ACCOMMODATION

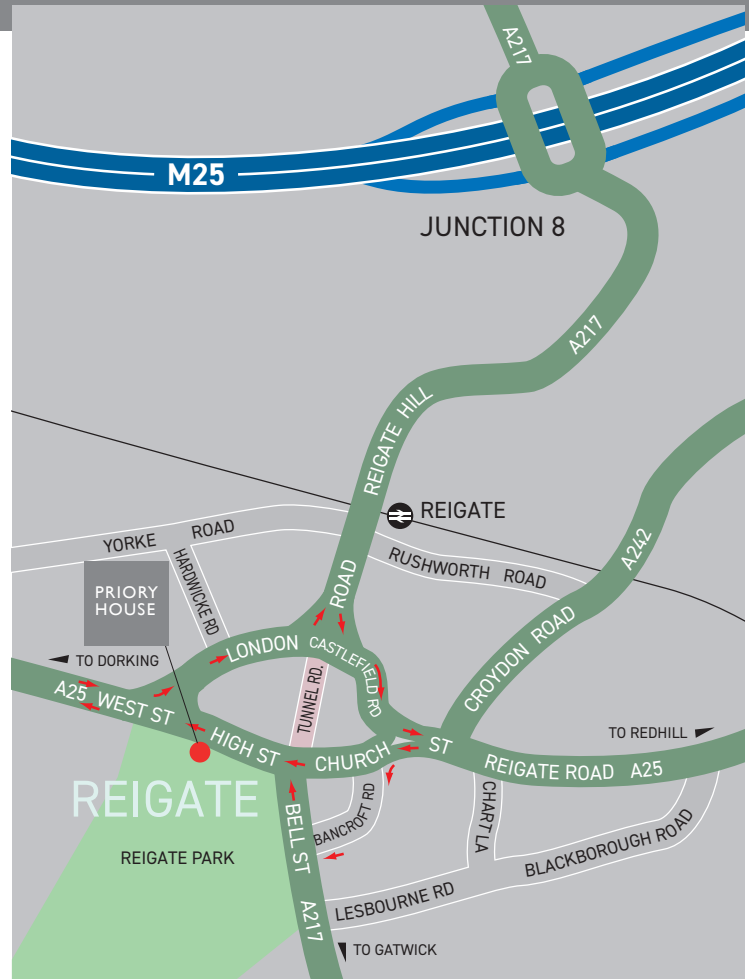
Net internal areas approx.:

Suite B	1,160 sq ft	107.7 sq m
Suite C	1,377 sq ft	127.9 sq m



TERMS Upon application.

VIEWING Strictly by appointment through the sole agents.



SPECIFICATION

- Contemporary finish throughout
- Air-conditioning
- Perimeter heating
- New LED lighting
- Perimeter trunking
- New contemporary kitchen facilities
- Passenger lift
- Basement car parking and Cycle rack
- Video/audio entry system
- Shower facilities
- EPC Rating: C73

Tim Hodges
tim.hodges@altusgroup.com

Hugo Broome
hugo.broome@altusgroup.com

A
UCG
BUILDING

www.ucgltd.com

