

Trusted since 1802
HENLEY-ON-THAMES | MARLOW | BASINGSTOKE

To Let - Office



The Hub, Suite 7 (201), 14 Station Road, Henley-on-Thames RG9 1AY

1,460 sq ft (135.63 sq m)

£32,000 per annum

sales • lettings & management • commercial • development • rural

SIMMONS & SONS

www.simmonsandsons.com

Location

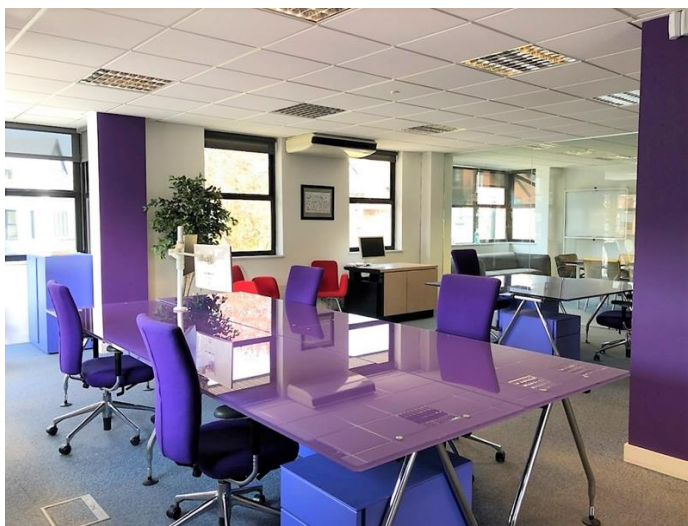


Henley-on-Thames is a vibrant market town on the River Thames. Within its historic streets are an abundance of independent shops a selection of national chains and a thriving range of restaurants bistros cafes and pubs.

Description

The Hub comprises an attractive, modern, second floor, air-conditioned office suite with kitchenette. The property benefits from 3 car parking spaces and is located adjacent to Henley-on-Thames train station. Ancillary storage on the third floor available by separate arrangement.

Inclusive Rental includes business rates, electricity water and service charge.



Simmons & Sons Surveyors LLP for themselves and for the vendors or lessors of the property whose agents they are give notice that: (i) the particulars are produced in good faith, are set out as a general guide only and do not constitute any part of a contract or offer; (ii) all descriptions, dimensions, references to condition and necessary permissions for use and occupation, and any other details are given in good faith and are believed to be correct, but any intending purchasers or tenants should not rely on them as statements or representations of fact but must satisfy themselves by inspection or otherwise as to the correctness of each of them; (iii) no person in the employment of Simmons & Sons Surveyors LLP has any authority to make or give any representation or warranty whatsoever in relation to this property.

Accommodation

The accommodation comprises the following net internal areas:

Floors	sq ft	sq m
Second Floor Suite	1,460	135.63
Total Area	1,460	135.63

EPC

The EPC rating is D.

VAT

VAT is applicable and charged on the rent.

Legal Costs

Each party is to be responsible for their own legal costs incurred in this transaction.

Terms

All inclusive, flexible, short term lettings to include rates, electricity, water and service charge. 3 car parking spaces included.

Business Rates

Included.

Contact

Strictly by appointment with the Sole Marketing Agents:

John Jackson
Henley-on-Thames office
Tel: 01491 571111
Email: commercial@simmonsandsons.com

Code for Leasing Business Premises

You should be aware that the Code of Practice on Commercial Leases in England and Wales strongly recommends you seek professional advice from a qualified surveyor, solicitor or licensed conveyancer before agreeing or signing a business tenancy agreement. The code is available through professional institutions and trade associations or through the website: [RICS](https://www.rics.org/uk/for-the-industry/code-of-practice-on-commercial-leases/)

sales • lettings & management • commercial • development • rural

32 Bell Street
Henley-on-Thames
Oxon
RG9 2BH
T: 01491 571111

1 High Street
Marlow
Bucks
SL7 1AX
T: 01628 484353

12 Wote Street
Basingstoke
Hants
RG21 7NW
T: 01256 840077

Peper Harow
The Estate Office
Godalming
GU8 6BQ
T: 01483 418151