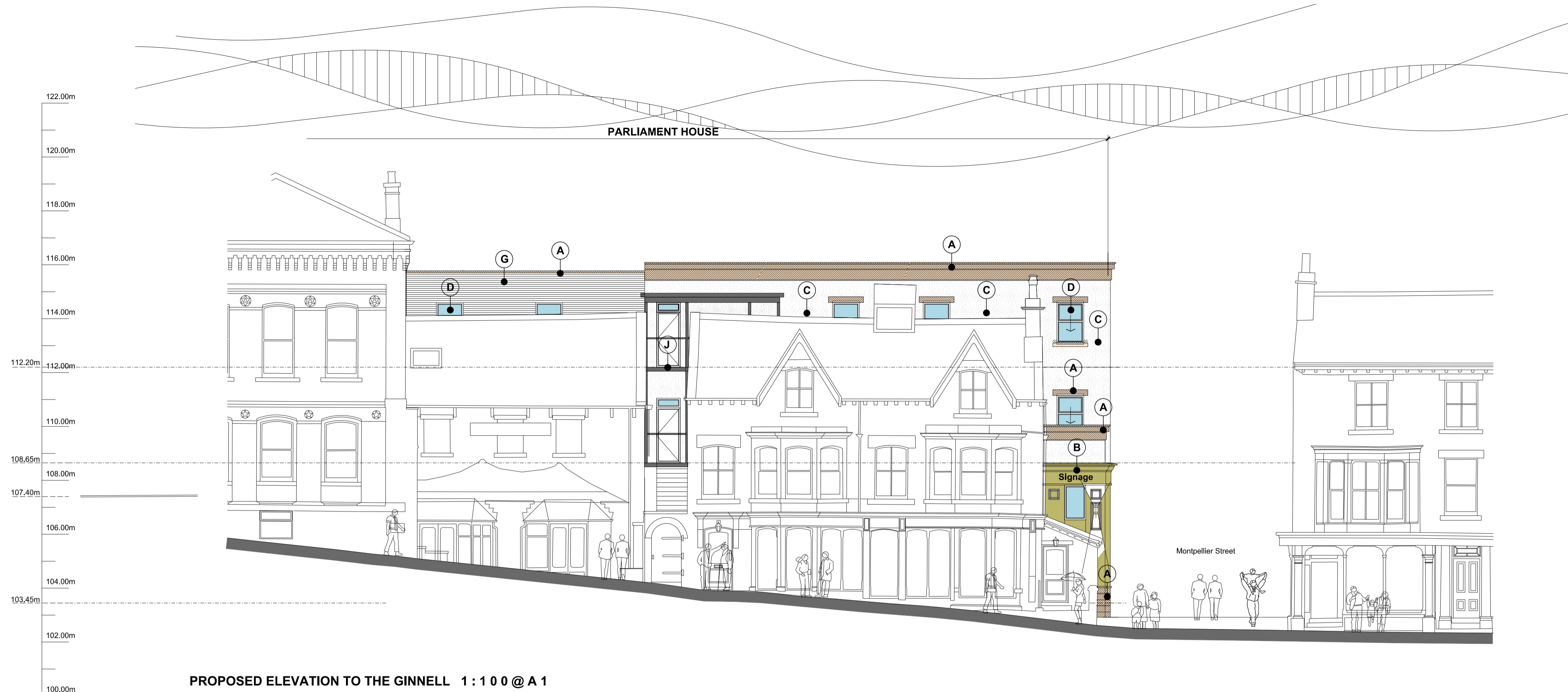
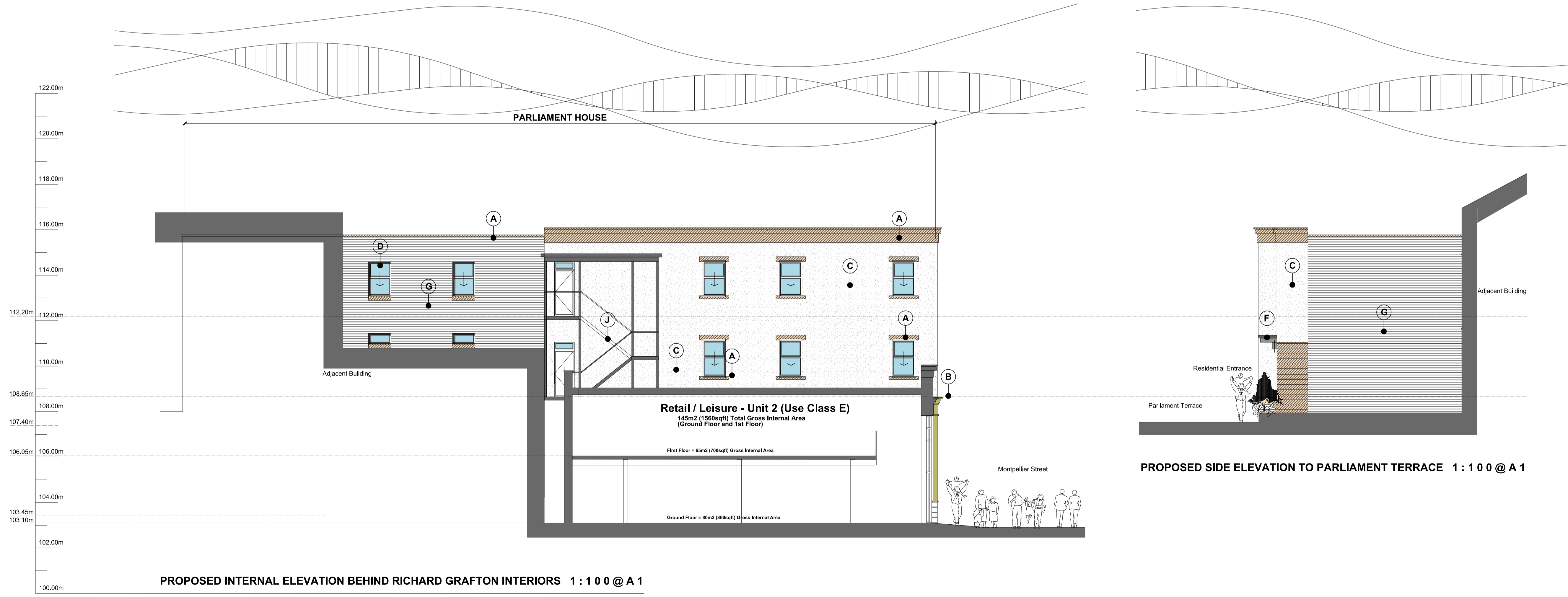


Notes:
 This drawing is the sole copyright of MDA Ltd and reproduction in any form is forbidden unless permission is obtained in writing.
 Do not scale from this drawing. Any discrepancies on site should be brought to the attention of MDA Ltd.
 Work and materials must comply with the current building regulations and codes of practice and be read in conjunction with building specifications and other sub-contractors information. All materials are to be installed in strict accordance with the recommendations of the manufacturers.



- External Material Schedule:**
- (A) Natural Stone walling, heads and cills and parapet capping to approved sample and detailing.
 - (B) Painted Timber shopfront surrounds with feature mouldings and fascia with lead capping all to approved sample and detailing.
 - (C) Coloured Render to approved sample and detailing.
 - (D) Aluminium Curtain Walling and windows - RAL colour to be agreed. Windows to be sliding sash.
 - (E) Feature Juliet Glass balconies to approved detailing.
 - (F) Aluminium Entrance canopy to approved detail.
 - (G) Existing Brickwork facade
 - (H) External Lighting to approved detailing.
 - (J) External metal fire exit stair to approved detail.



Rev	Description	By	Chkd	Date

ATC PROPERTIES LIMITED

Project Title
**PARLIAMENT HOUSE
 PARLIAMENT TERRACE
 HARROGATE**

**PROPOSED STREET
 ELEVATIONS - SHEET 2**

MDA MOWBRAY™
 DESIGN ARCHITECTS

The Coach House
 Royal Oak Yard
 Ripon HG4 1PB

info@mda-ltd.com
 +44 (0)1765 600 237
 www.mda-ltd.com

Scale	Size	Date	Drawn	Checked
1:100	A1	SEP 21	AB	RL

Status
PLANNING

MDA Job No	Number	Rev
1046	2017	C