



AN IDEAL FIRST FLOOR OFFICE SPACE CLOSE TO BURY TOWN CENTRE WITH UTILITIES INCLUDED. A MUST VIEW!

First Floor Room 2

The Old Court House Business Hub, Bury,
BL9 0AL

Serviced Office

TO LET

135 sq ft

(12.54 sq m)

- APPROX. 135 SQ FT
- CLOSE TO BURY CENTRE
- FIRST FLOOR IN A MODERN BUSINESS SUITE
- UTILITIES INCLUDED

First Floor Room 2, The Old Court House Business Hub, Bury, BL9 0AL

Summary

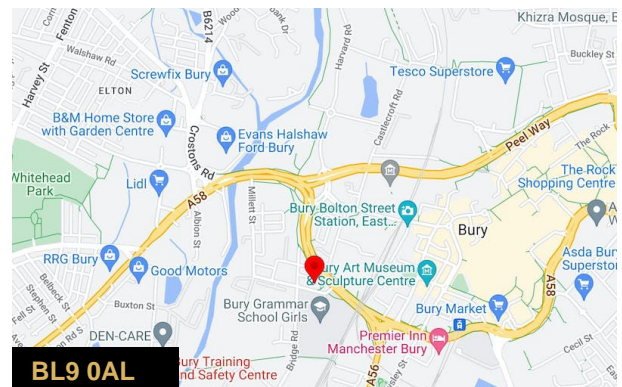
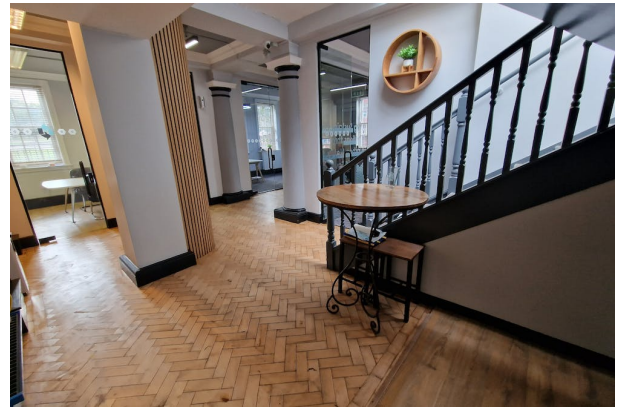
Available Size	135 sq ft
Rent	£400 per month Includes Utilities
Business Rates	Small business rates may apply
Service Charge	N/A
Car Parking	N/A
VAT	Not applicable
Estate Charge	N/A
EPC Rating	D

Description

An ideal business opportunity for a new venture or a relocation. This first floor premises is located in Bury town centre offering a great space (approx. 135 SQ FT). The space is in The Old Courthouse Business Hub and comprises an open plan glass fronted office space. There is a communal kitchen, W.C., hallway and coffee area with coffee machine. The premises is located opposite Bury Grammar School, just off Jubilee Way and a short walk to Bury Tram stop. Utilities are included, clients would just need to arrange their own internet.

Room - 4.81m x 2.67m

Has three windows, radiator, two ceiling light points and a door to communal area.



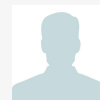
Viewing & Further Information



Simon Harvey

0161 764 4440

commercial@pearsonferrier.co.uk



Stuart Pearson

07956405651

stuart.pearson@pearsonferrier.co.uk

More properties @ [pearsonferrier.co.uk](https://www.pearsonferrier.co.uk)