



Large Commercial Unit on a Secure Industrial Estate. Would suit a number of potential uses.

Unit 9

Lowercroft Business Park, Bury, BL8 3PA

Distribution, Distribution
Warehouse, Industrial / Storage,
Light Industrial, Warehouse,
Industrial / Warehouse

TO LET

3,700 sq ft

(343.74 sq m)

- Over 3700Sq Ft
- Walk in Condition
- Located on a Secure Industrial Estate
- Office Space, Meeting Room, Kitchen and Toilet
- Excellent access to Motorway Network
- Available Now

Unit 9, Lowercroft Business Park, Bury, BL8 3PA

Summary

Available Size	3,700 sq ft
Rent	£3,000 per month
Rateable Value	£9,200
EPC Rating	Upon Enquiry

Description

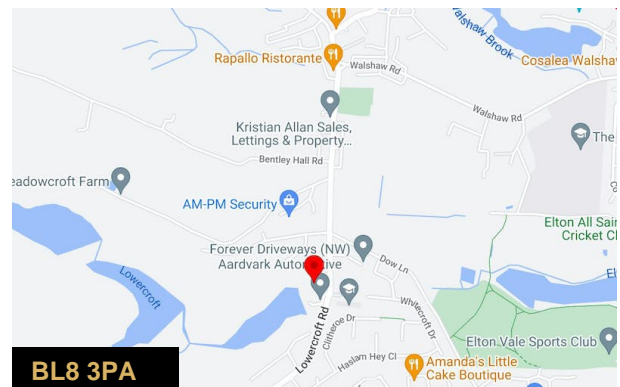
A substantial unit of over 3700 Sq Ft with office space, kitchen, toilet and large warehouse space which is accessed by a large electric roller door. The office space has recently been fitted out and aside from flooring is ready to move into. The property is located on a high quality industrial estate to the West side of Bury with excellent access to the Motorway Network and local amenities. It would suit a wide variety of uses.

The rateable value is £9200.00. The EPC rating is C.

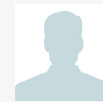
Accommodation

The accommodation comprises the following areas:

Name	sq ft	sq m	Availability
Ground	3,700	343.74	Let
Total	3,700	343.74	



Viewing & Further Information



Stuart Pearson

07956405651

stuart.pearson@pearsonferrier.co.uk

More properties @ [pearsonferrier.co.uk](https://www.pearsonferrier.co.uk)