



**NOT TO BE MISSED THIS 2 STOREY COMMERCIAL PROPERTY
OF ROUGHLY 2,967 SQFT LOCATED IN THE HEART OF BURY
TOWN CENTRE.**

6-8 Crompton Street

Bury, BL9 0AD

Office, High Street Retail

TO LET

2,967 sq ft

(275.64 sq m)

- SOUGHT AFTER LOCATION
- HIGH FOOTFALL
- SCOPE FOR CHANGE OF USE
- SUITABLE FOR A WIDE VARIETY OF USES

Where your business belongs

6-8 Crompton Street, Bury, BL9 0AD

Summary

Available Size	2,967 sq ft
Rent	£2,000 per month
Rates Payable	£12,724.50 per annum
Rateable Value	£25,500
Service Charge	N/A
Car Parking	TBC
VAT	Not applicable
Estate Charge	TBC
EPC Rating	D

Description

Pearson Ferrier Commercial are pleased to bring to the market this vacant commercial property measuring roughly 2,967 sqft located in the heart of Bury Town Centre.

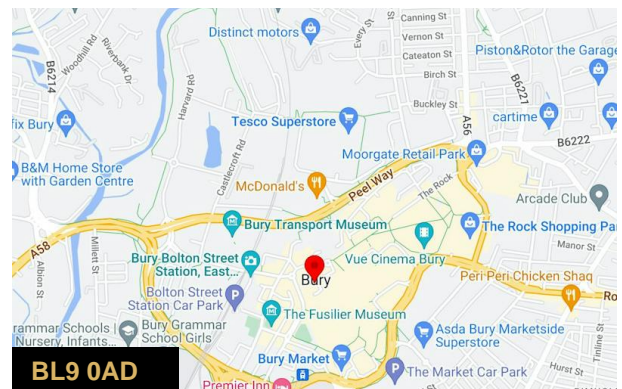
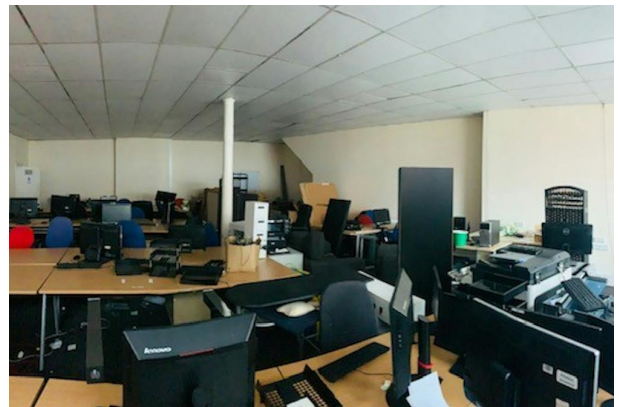
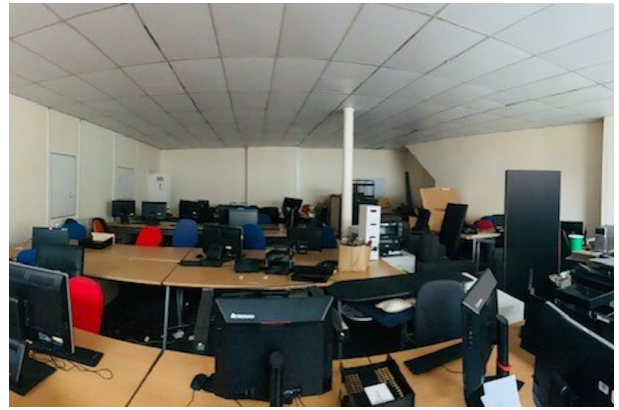
If you are looking to place your business in the heart of Bury Town Centre, then we may just have what you are looking for.

This 2 storey commercial premises is located on Crompton Street in a prominent position just off The Rock, and in close proximity to the Millgate Shopping Centre.

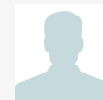
Ideal for a wide variety of uses such as retail, beauty, office space or even hospitality (given the necessary permissions). The open plan nature of the ground floor is particularly appealing and the first floor is currently divided up into three smaller offices that could also be used as staff rooms, training, storage etc.

Location

The building can be found on Crompton Street within the heart of Bury Town Centre. This commercial building has the benefit of the Metrolink to Manchester, South Manchester and the full Metrolink Network. In addition to this, it has the benefit of such facilities such as the Rock Shopping Centre and the Millgate Shopping Centre. Junction 2 of the M66 Motorway is approximately 1 mile East of the property.



Viewing & Further Information



Stuart Pearson

07956405651

stuart.pearson@pearsonferrier.co.uk



Simon Harvey

0161 764 4440

commercial@pearsonferrier.co.uk

More properties @ [pearsonferrier.co.uk](https://www.pearsonferrier.co.uk)