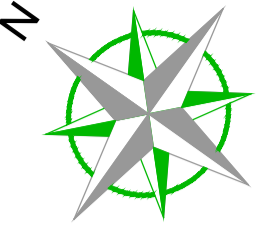
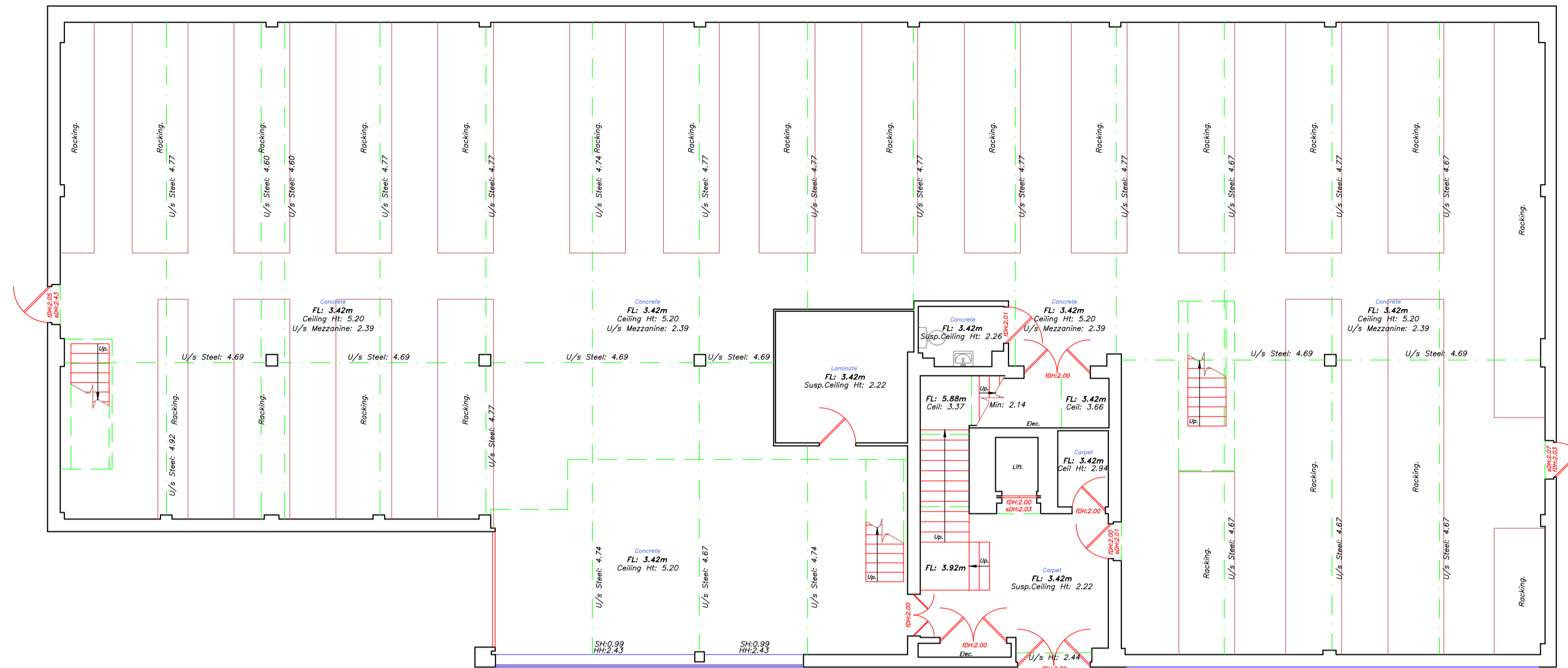


Ground Floor Plan



OS Note:

The Ordnance Survey file is to be used as a guide only.

OS Buildings Surveyed Buildings

This survey has been orientated to the Ordnance Survey (OS) National Grid OSGB36(15) via Global Navigational Satellite Systems (GNSS) and the O.S. Active Network (OS Net).

A true OSGB36 coordinate has been established near to the site centre via a transformation using the OSTN15GB & OSGB15GB transformation models.

The survey has been correlated to this point and a further one or more OSGB36(15) points established to create a true O.S. bearing for angle orientation.

No scale factor has been applied to the survey therefore the coordinates shown are arbitrary & not true O.S. Coordinates which have a scale factor applied.

Please refer to Survey Station Table to enable establishment of the on-site grid.

Building Survey Legend:

SH 1.00	Sill Height from FFL
HHT 2.12	Head Height from FFL
SL 51.03m	Sill Level from defined datum.
HL 52.82m	Head Level from defined datum.
Susp CHt: 2.00	Suspended Ceiling Height from FFL
Struct CHt: 3.00	Structural Ceiling Height from FFL
Susp Cel: 30.00m	Suspended Ceiling Level from datum.
Struct Cel: 31.00m	Structural Ceiling Level from datum.
IFL: 100.00m	Internal Floor Level (General)
+100.00m	Internal Floor Level (Specific)
Insertion Point	Insertion Point for overlay drawings of other floors or details.

Incoming Services

- Elec
- Gas
- Water

Topographical Survey Legend:

Symbol	Description	Symbol	Description
	Boundary		Drainage
	Concrete edge		Drainage cover
	Concrete wall		Drainage pipe
	Concrete slab		Drainage manhole
	Concrete floor		Drainage chamber
	Concrete ceiling		Drainage tunnel
	Concrete column		Drainage vault
	Concrete beam		Drainage shaft
	Concrete staircase		Drainage stack
	Concrete lintel		Drainage riser
	Concrete sill		Drainage fall pipe
	Concrete wall footing		Drainage down pipe
	Concrete foundation		Drainage gully
	Concrete kerb		Drainage trap
	Concrete curb		Drainage vent
	Concrete apron		Drainage cleanout
	Concrete pad		Drainage access cover
	Concrete apron wall		Drainage inspection cover
	Concrete apron wall footing		Drainage manhole cover
	Concrete apron wall foundation		Drainage manhole cover frame
	Concrete apron wall foundation footing		Drainage manhole cover frame foundation
	Concrete apron wall foundation footing foundation		Drainage manhole cover frame foundation footing
	Concrete apron wall foundation footing foundation footing		Drainage manhole cover frame foundation footing foundation
	Concrete apron wall foundation footing foundation footing foundation		Drainage manhole cover frame foundation footing foundation footing foundation

Rev	Date	Description	Drawn	Q. Ref.
-----	------	-------------	-------	---------

Topographical Surveys Measured Building Surveys
 Site Engineering 3D Laser Scanning
 Utility / CCTV Surveys 3D Revit & BIM Models
 Bathymetric Surveys Area, Lease & Fire Plans

Rowan House
Duffield Road
Little Eaton
DE21 5DR
 Tel (01332) 830044 Fax (01332) 830055
 admin@greenhatch-group.co.uk www.greenhatch-group.co.uk

St Albans Unit 6, The Courtyard St Albans Hertfordshire AL4 0LA t. (01727) 854481	Newcastle 24 Riverside Studios Armitage Road Newcastle-Upon-Tyne NE4 7YL t. (01912) 736391	Central London 27 Cornwell Terrace Regents Park London NW1 5LL t. (0207) 2241866
--	---	---

CLIENT
Hale Architecture

PROJECT
24-34 Ingate Place
Battersea
London, SW8 3NS

TITLE
Existing Floor Plans

SCALE
A1@ 1: 100

DATE
August 2021

DRAWN
JJ

QUALITY REF
GH11337

Level datum
OS GPS Level

Grid orientation
OS GPS

Job number
41208

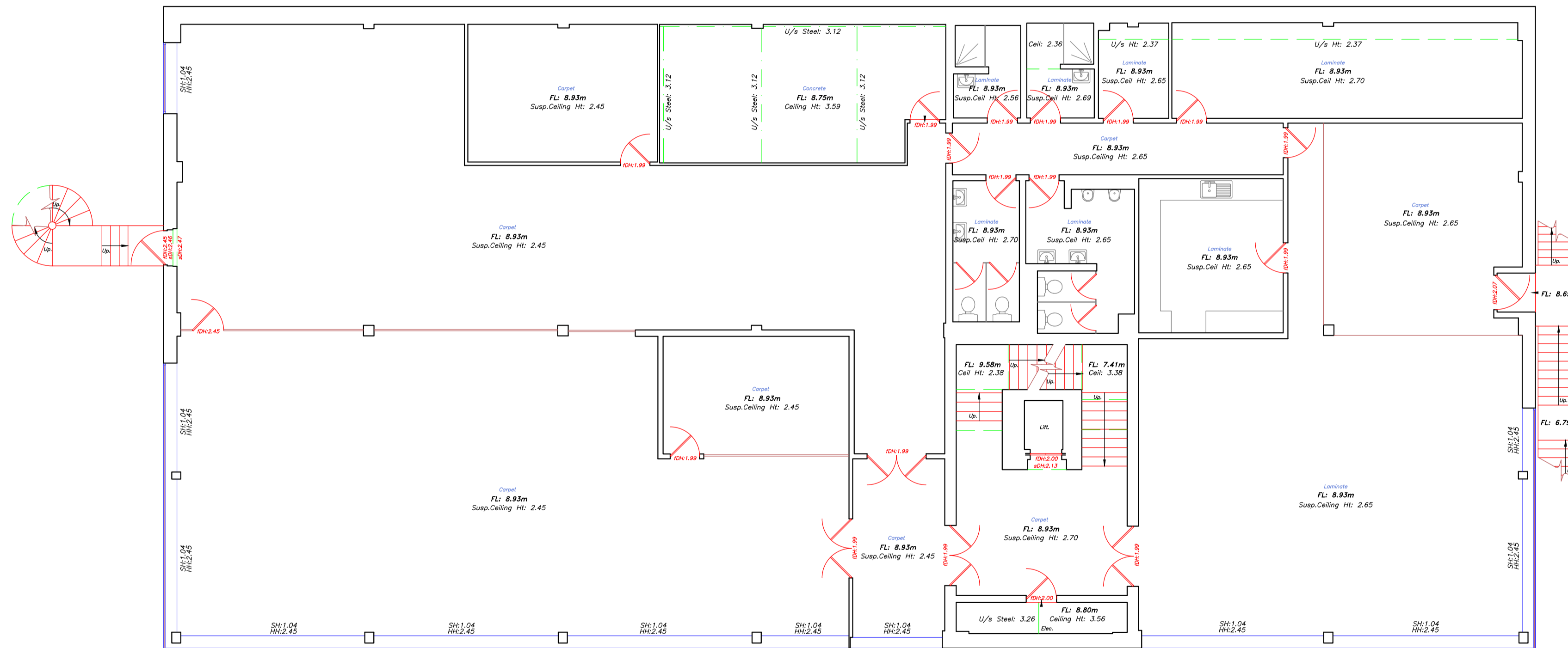
Drawing No.
41208_02_P

Rev.
0

Comments
This plan should only be used for its original purpose. Greenhatch Group accepts no responsibility for this plan if supplied to any party other than the original client.
All dimensions should be checked on site prior to design and construction.
Some services may have been omitted due to parked vehicles.
Drainage information (where applicable) has been visually inspected from the surface and therefore should be treated as approximate only.

Notes:

First Floor Plan



Mezzanine Plan

