

22 Soho Square

LONDON W1









1,823 sq ft fitted office to let



Plug & play, fitted office space to let

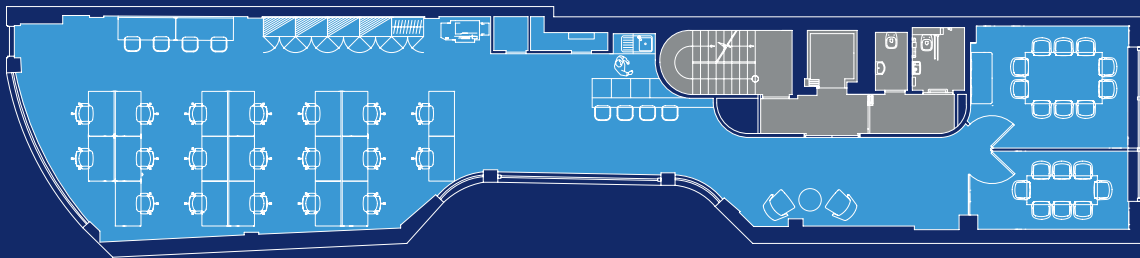
22 Soho Square offers 1,823 sq ft of newly refurbished fitted-out office space on the 2nd floor. The office is air-conditioned and has views over Soho Square.

Specification

-  19 open plan desks
-  2 meeting rooms
-  Furnished & cabled
-  VRV air conditioning
-  Square views
-  Showers
-  Video entryphone system
-  Passenger lift



2nd Floor Plan - 1,823 sq ft (169.3 sq m)



Soho Square

For indicative purposes only, not to scale



Location

22 Soho Square commands a prominent position on the east side of the Square, right in the heart of Soho. The building is a short walk from Tottenham Court Road Underground station, providing access to the Central and Northern lines, as well as the new Elizabeth line.



Viewing

Please contact the joint sole letting agents:

Terms

Upon application.

Misrepresentations Act 1967 – Whilst all the information in this brochure is believed to be correct, neither the agent nor the client guarantee its accuracy nor is it intended to form any part of any contract. All areas quoted are approximate. April 2020.

Joel Randall
020 7152 5517
joel.randall@cushwake.com

Ed Arrowsmith
020 7152 5964
ed.arrowsmith@cushwake.com

Phil Frenay
020 7399 2742
phil@coh.eu

Bryan Pontifex
020 7408 1114
bryan@coh.eu

