

TO LET
REFURBISHED INDUSTRIAL UNITS

2,389 - 28,889 SQ FT

(221.95 - 2,683.88 SQ M)

**1-3 ATLANTIC WAY &
2-6 SUMMERS ROAD
DEMPSTER BUILDING
BRUNSWICK BUSINESS PARK
LIVERPOOL L3 4BE**

Industrial / warehouse units with high quality offices
on Liverpool's famous waterfront

Enter >

FOR IDENTIFICATION PURPOSES

LIVERPOOL CITY CENTRE

DELIFONSECA

AVAILABLE ACCOMMODATION

RIVER MERSEY

BEAN CAFÉ

PURE GYM

YELLOW SUB

A5036 SEFTON STREET

ATLANTIC WAY

SUMMERS ROAD

CENTURY BUILDING

HOWDENS

 BRUNSWICK STATION

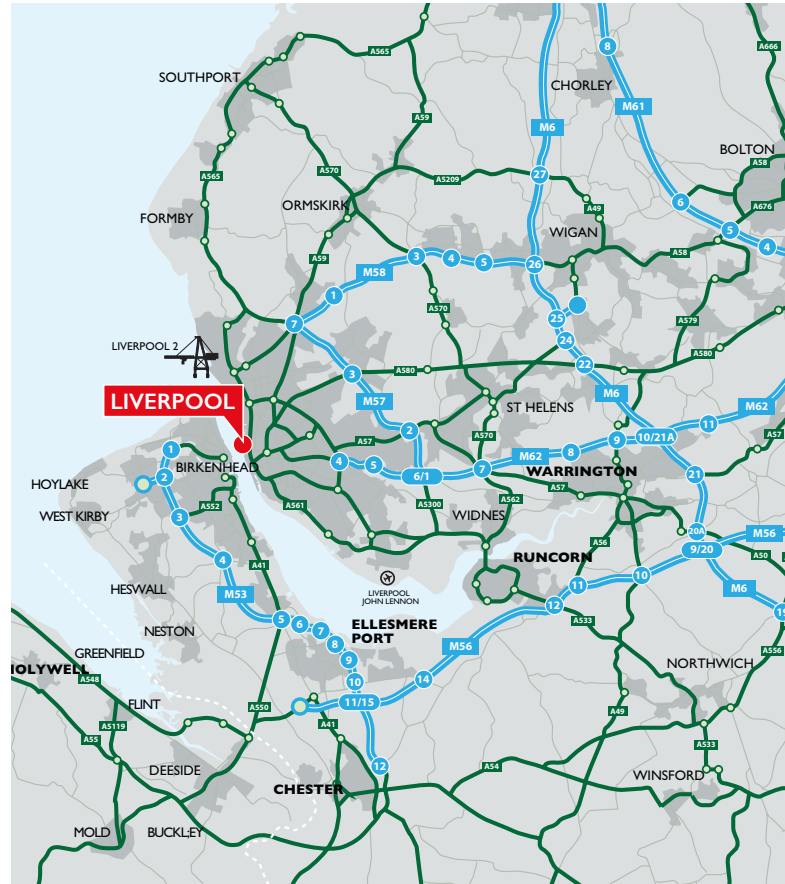
DEMPSTER BUILDING

LOCATION

The subject units known as 1-3 Atlantic Way and 2-6 Summers Road are situated in Dempster Building, Brunswick Business Park, Liverpool.

Brunswick Business Park is in a prime dockside location approximately two miles south of Liverpool City Centre. The business park and immediate locality is home to an attractive mix of industrial and retail businesses including Howden, Yellow Submarine and Royal Mail as well as franchised car dealerships such as Stoneacre, Arnold Clark and Hatfield's Jaguar Land Rover. Office occupiers include Slater and Gordon and NHS.

Brunswick Business Park is easily accessed from Sefton Street (A5036), a primary route running between north and south Liverpool, providing links to the inner ring road and Mersey Tunnels connecting the city of Liverpool to the Wirral. Brunswick Station is situated within walking distance, directly opposite the business park providing access to local destinations and main line services at Liverpool Lime Street. Liverpool John Lennon Airport is situated approximately 7 miles to the south.



DESCRIPTION

The accommodation comprises a linked series of light industrial / warehouse units forming the northern part of Dempster Building. Fronting the River Mersey, the landmark converted former dockside building provides a range of attractive units with brickwork and profiled clad elevations under pitched metal deck roofs. The subject units benefit from interconnecting roller shutter doors allowing for flexible use and configuration of the available accommodation.

Units 2 & 3 Atlantic Way include integral two storey offices fronting the River Mersey providing a reception, a range of private offices, meeting rooms, general offices and breakout space.

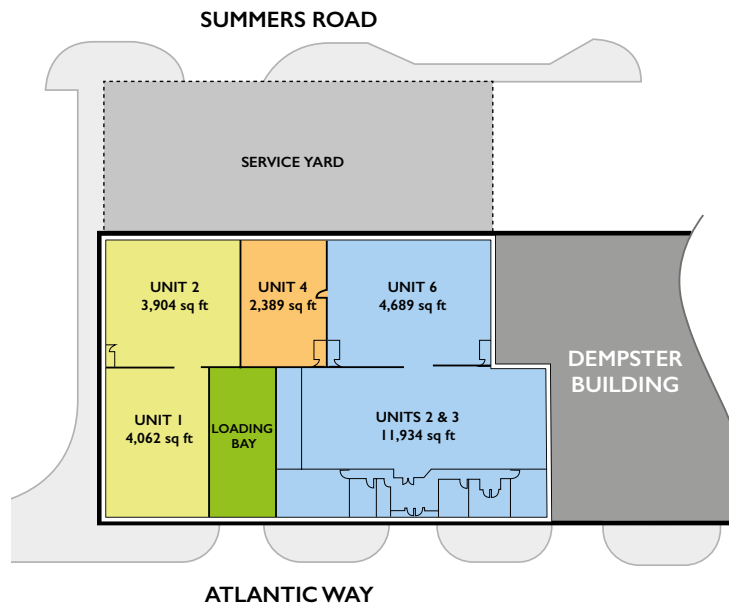
Externally, there is staff and visitor parking on Atlantic Way and servicing via a large yard accessed from Summers Road.

SPECIFICATION

- Sodium lamps within warehouses
- Gas fired warehouse heater (units shaded blue)
- Multiple roller shutter loading doors
- Refurbished ground and mezzanine level offices with gas fired central heating and perimeter trunking (2 & 3 Atlantic Way)
- Ample service yard
- CCTV monitored estate
- On-site estate management

ACCOMMODATION

	sq ft	sq m
2 Summers Rd / 1 Atlantic Way	7,966	740.06
4 Summers Rd	2,389	221.95
2 & 3 Atlantic Way / 6 Summers Rd	16,623	1,544.33
Loading Bay	1,911	177.54
Total	28,889	2,683.88



TERMS

The accommodation is available as a whole or in part via effective FR&I leases.

For further details of availability and terms please contact the agents.

SERVICE CHARGE

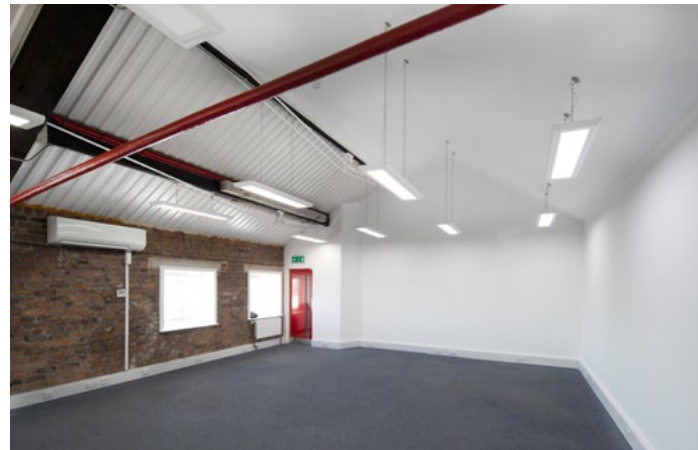
A service charge is levied in respect of the landlord's costs of estate and building maintenance, management and the provision of services used in common.

EPC

C68.

VAT

Unless otherwise stated all sums will be subject to the addition of VAT at the prevailing rate.



FOR IDENTIFICATION PURPOSES



FURTHER INFORMATION

Please contact the joint agents:

**Mason
Partners**

0151 227 1008
MASONPARTNERS.COM

jonswain@masonpartners.com
07810 435 071

CBRE

+44 (0)151 224 7666
www.cbre.co.uk

Darren.Hill2@cbre.com
07590 485 287

Misdescription Act

The agents on their behalf and for the sellers or lessors of this property whose agents they are, give notice that: (i) The particulars are set out as a general outline only for guidance of intending purchasers or lessees and do not constitute, nor constitute part of, an offer or contract. (ii) All descriptions, dimensions, references to condition and necessary permissions for use and occupation, and other details are given in good faith and are believed to be correct, but any intending purchasers or tenants should not rely on them as statements or representations of fact, but must satisfy themselves by inspection or otherwise as to the correctness of each of them. (iii) No person employed by the agents has any authority to make or give any representation or warranty whatever in relation to these properties. Declaration. A director of Mason & Partners has an interest in the property.

SUBJECT TO CONTRACT

Published January 2024
Design: Alphabet Design