

# THE HQ

439 SQ FT-  
14,039 SQ FT  
Grade A Office  
Space

The HQ,  
Chesterfield,  
Boythorpe Road,  
S40 2QR

Work-ready.  
Set. Go.

**Work-ready to meet  
the demands of  
modern business;  
welcome to The HQ.**

**Set** in the enviable and well-connected location of Chesterfield, this Grade A office space can provide an ideal work-home for any organisation to prosper. Let's **go.**

# At the ready



# Set the Standard



Air Conditioned



Shower Facilities



LED lighting



Double Glazing



Lift Access



138 Parking Spaces



Raised Access Floors



Fully DDA Compliant



Parking Ratio 1:306 SQ FT

Fully-equipped spaces for businesses to set up in, The HQ boasts raised access floors, shower facilities, lift access, as well as generous car parking.

The HQ Boythorpe Road is a purpose-built, modern four-storey office building with a central core arrangement. It offers a total of 14,039 SQ FT of space, with units starting from 439 SQ FT. The HQ is finished to Grade A specification and offers a flexible working environment to suit all business needs, along with ample on-site car parking.



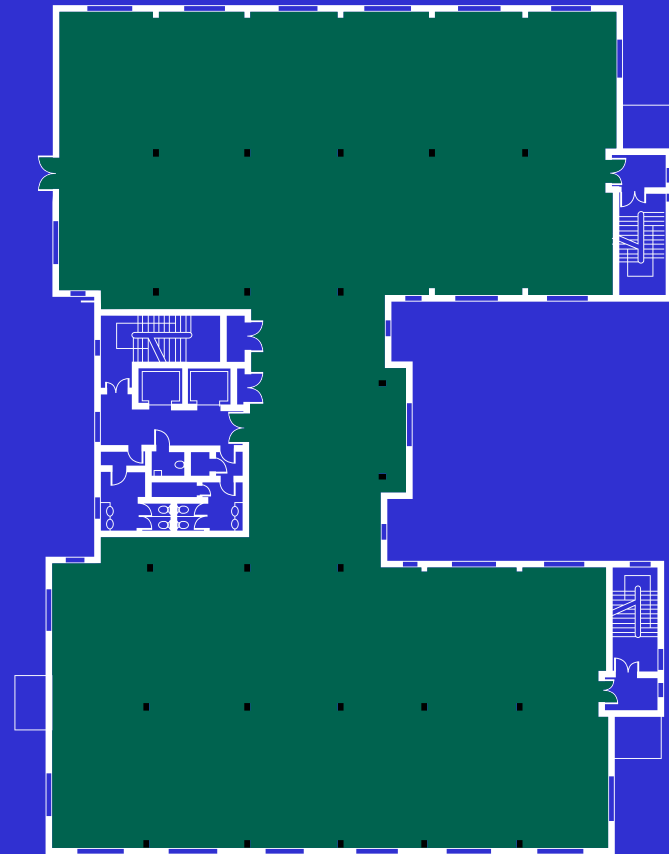
# Forblans

## AVAILABLE SPACE

**14,039** SQ FT

Four storeys of grade A office space to suit any business needs, ranging from 439 SQ FT to 14,039 SQ FT.

	SQ FT
GF Suite 4	578
GF Suite 5	468
GF Suite 6	439
1st	10,828
2nd (RHS)	1,726





THE HQ, CHESTERFIELD

Chesterfield  
Train Station  
1.2 MILES

Church of St Mary  
and All Saints  
0.8 MILES

Alma  
Leisure Centre  
1 MILE

Ravenside  
Retail Park  
0.6 MILES

Chesterfield  
Coach Station  
0.5 MILES

Queens Park  
0.2 MILES

Chesterfield  
Town Hall  
0.4 MILES

Queens Park  
Sports Centre  
0.4 MILES

THE HQ

Wheatbridge  
Retail Park  
0.1 MILES

# Perfectly Set



## Chesterfield Art Trail

60 SCULPTURES TO DISCOVER

## Trans Pennine Trail

350 MILES COASTAL ROUTE ACROSS  
NORTHERN ENGLAND

## Michelin Star Dining

AWARD WINNING FINE-DINING

## 8 Lane Swimming

LEISURE FACILITIES LOCATED JUST  
MINUTES AWAY

## Grade II-Listed

2 HISTORIC THEATRES IN THE  
HEART OF CHESTERFIELD

## Queen's Park

A STUNNING PARK TO ENJOY



Chesterfield town centre boasts an array of retail, restaurant and leisure opportunities, as well as being on the edge of the Peak District National Park.

# Good to go

**Set within easy reach of the M1 motorway and the rest of the UK, The HQ goes the distance when it comes to connectivity.**

Easily found, take the A61/A617 roundabout and head towards the town centre. Turn left onto the A619 past Ravenside Retail Park and Queen's Park. Finally, turn left onto Boythorpe Road and The HQ will be sure to stand out on your right.

<b>Leeds</b>	49 Miles	1 hr 6 min
<b>Sheffield</b>	17 Miles	35 min
<b>Derby</b>	29 Miles	39 min
<b>Manchester</b>	46 Miles	1 hr 38 min
<b>Nottingham</b>	26 Miles	40 min
<b>Leicester</b>	52 Miles	1 hr 2 min
<b>Birmingham</b>	73 Miles	1 hr 16 min
<b>London</b>	150 Miles	3 hr 13 min



# THE HQ

**439 SQ FT-  
14,039 SQ FT  
Grade A Office  
Space**

The HQ,  
Chesterfield,  
Boythorpe Road,  
S40 2QR

[WWW.THEHQCHESTERFIELD.CO.UK](http://WWW.THEHQCHESTERFIELD.CO.UK)

**A development by FI Real Estate Management**



**Dom Knowles**

**Ben Knights**

enquires@fi-rem.com 0845 500 6161

FIREM Ltd for themselves and any joint agents, vendors or lessors of this property whose agents they are, give notice that, (i) the particulars are set out as a general outline only for the guidance of intending purchasers or lessees, and do not constitute, or any part of, an offer or contract; (ii) all descriptions, dimensions, references to condition and necessary permissions for use and occupation, and other details are given with all good faith without responsibility and any intending tenants should not rely on them as statements or representations of fact but must satisfy themselves by inspection or otherwise as to the accuracy; (iii) no person in the employment of FIREM Ltd or any joint agency has any authority to make or give any representations or warranty in relation whatever in relation to this property. (July 2023)

**Crafted by CAB Property**