

BRIDGE POINT SOUTHALL
COLLETT WAY, UB2 4SE
/// habit.crown.hint

BRIDGE

BRIDGE POINT SOUTHALL

77,947 SQ FT (7,242 SQ M)
PRIME LAST-MILE URBAN
LOGISTICS UNIT
AVAILABLE TO OCCUPY JULY 2023



Central London

A4020

selco

TOOLSTATION

SCREW-FIX

home bargains

Topps Tiles

MATALAN

GB Liners

tmb

Délic France

dpd

ESTABLISHED LAST MILE LOCATION

Bridge Point Southall is an ideally located detached and self-contained last mile urban distribution warehouse, totalling 77,947 sq ft.

Good access to the M25/J15 and M4/J3 with direct routes to West London and Heathrow.

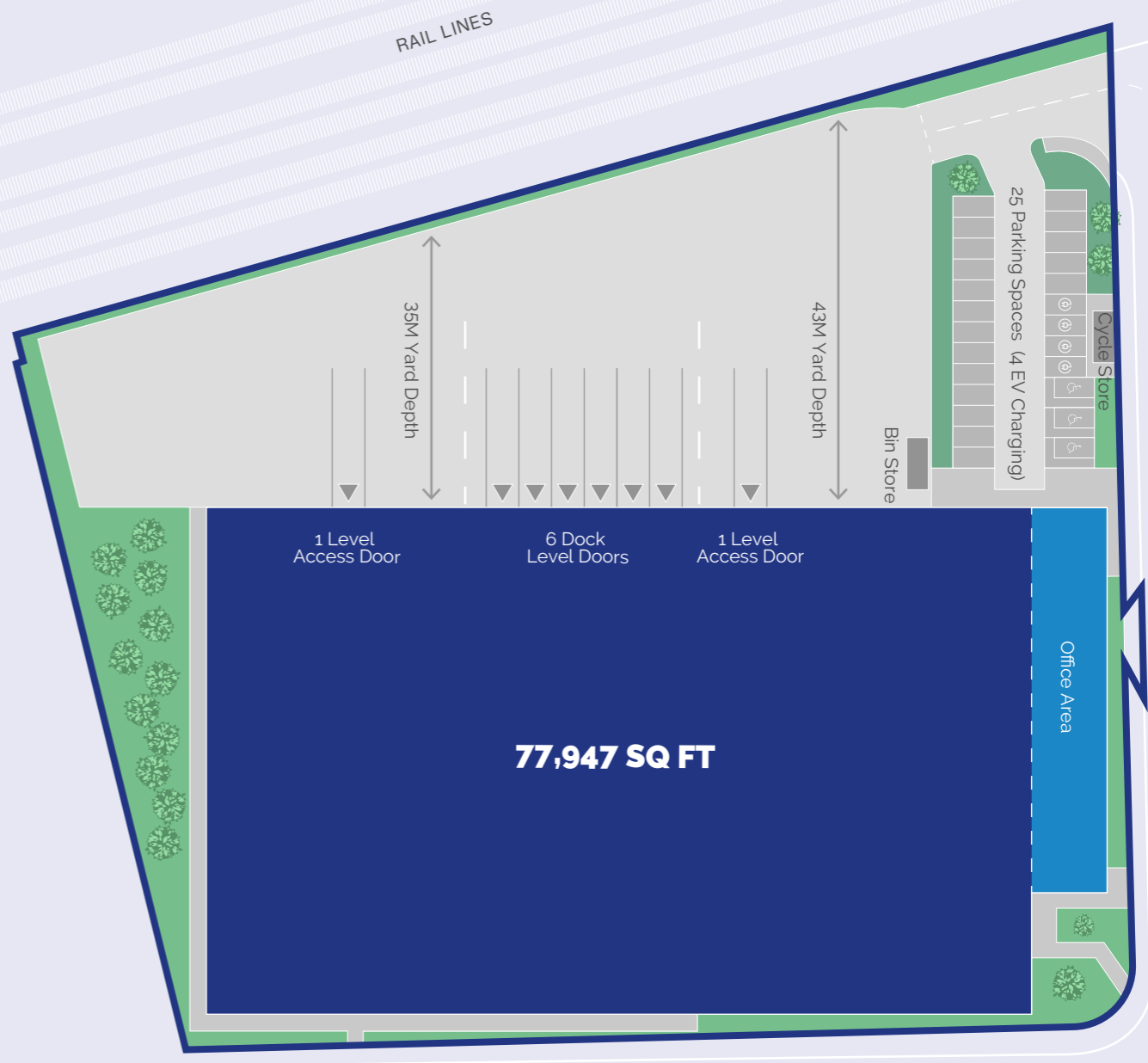
The immediate area is an established industrial location popular with last mile logistics, trade counters, manufacturers, aviation sector, food production and the film industry.

- 15M CLEAR INTERNAL HEIGHT
- 43M FULLY SECURE YARD
- ABILITY TO INSTALL FIBRE INTERNET
- TOTAL POWER 500 KVA
- FLOOR LOADING 50 KNV/M²
- LG7 LIGHTING
- 6 DOCK AND 2 LEVEL ACCESS DOOR

EXCEPTIONAL SPECIFICATION

Bridge Point Southall has been designed to incorporate best-in-class specification benefiting from the following

- COMFORT HEATING / COOLING
- KITCHENETTE
- 360° LORRY TURNING
- 24/7 365 UNRESTRICTED USE
- OFFICE - CAT-A FIT OUT
- PV PANELS
- 25 CAR PARKING SPACES
- CLASS EG(III), EG(III), B2 AND B8



Area	Sq Ft	Sq M
Warehouse	68,321	6,347
2 Storey Offices	9,626	894
Total GEA	77,947	7,241

BUILT FOR TOMORROW

Bridge Point Southall has been designed with a sustainable future in mind featuring best in class ESG credentials reducing occupational costs and catering to the requirements of modern day occupation, safeguarding against the requirements of tomorrow.



Active and passive Electric Vehicle Charging points



BREEAM Excellent



Operational Net Zero Carbon



Cycle Parking



PV Panels



Air Source Heat Pump



EPC A Rating



Operational Cost Savings

Maximum PV Coverage
Producing 259.12 kW per annum*



Cost Savings
£1.46 per sq ft per annum*



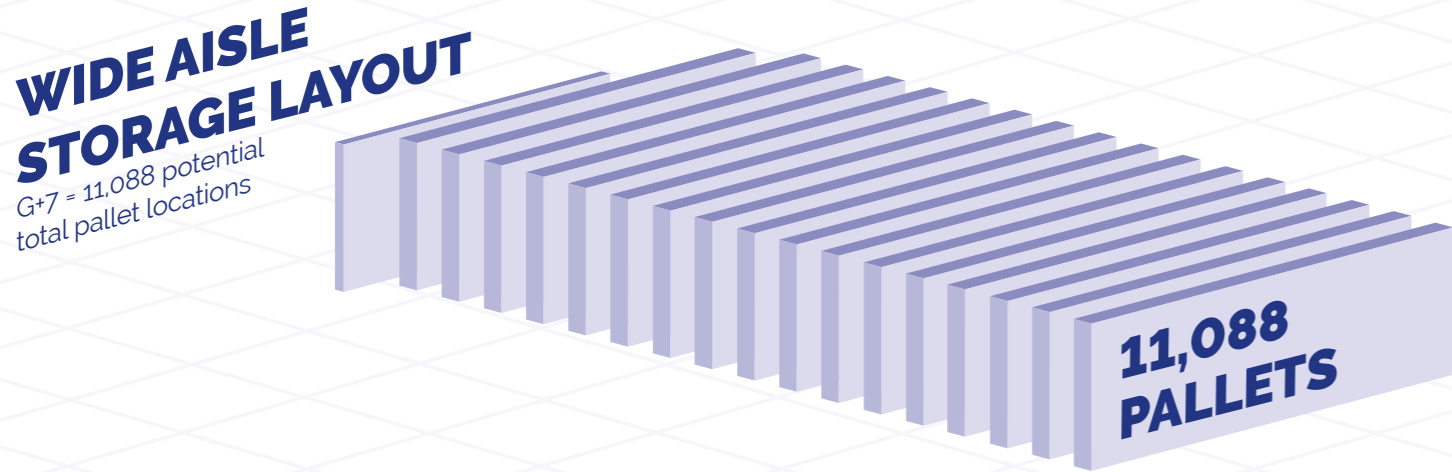
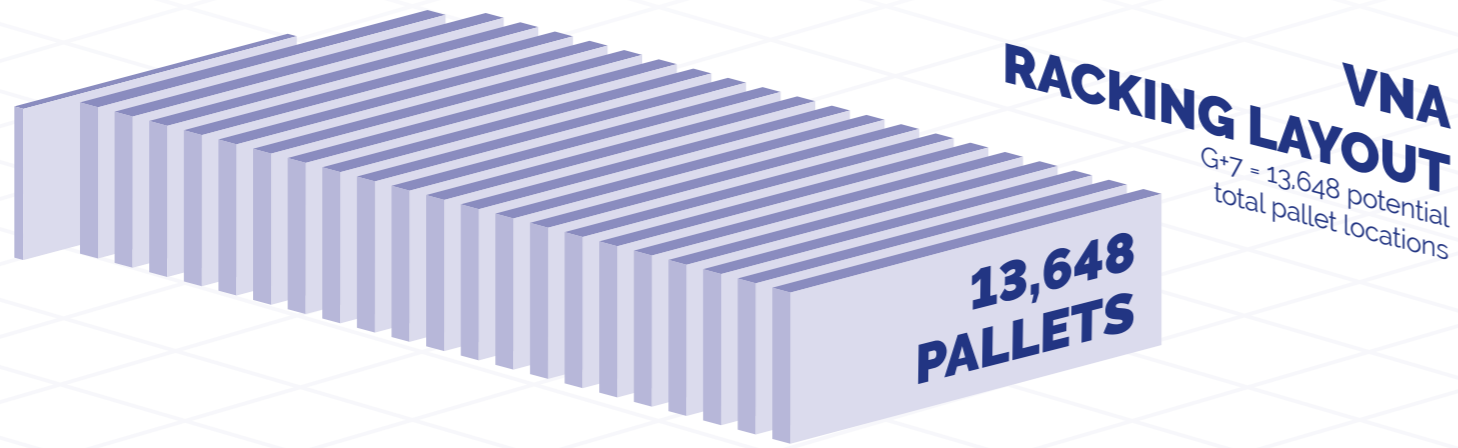
CO² Savings
58 ton saving per annum*



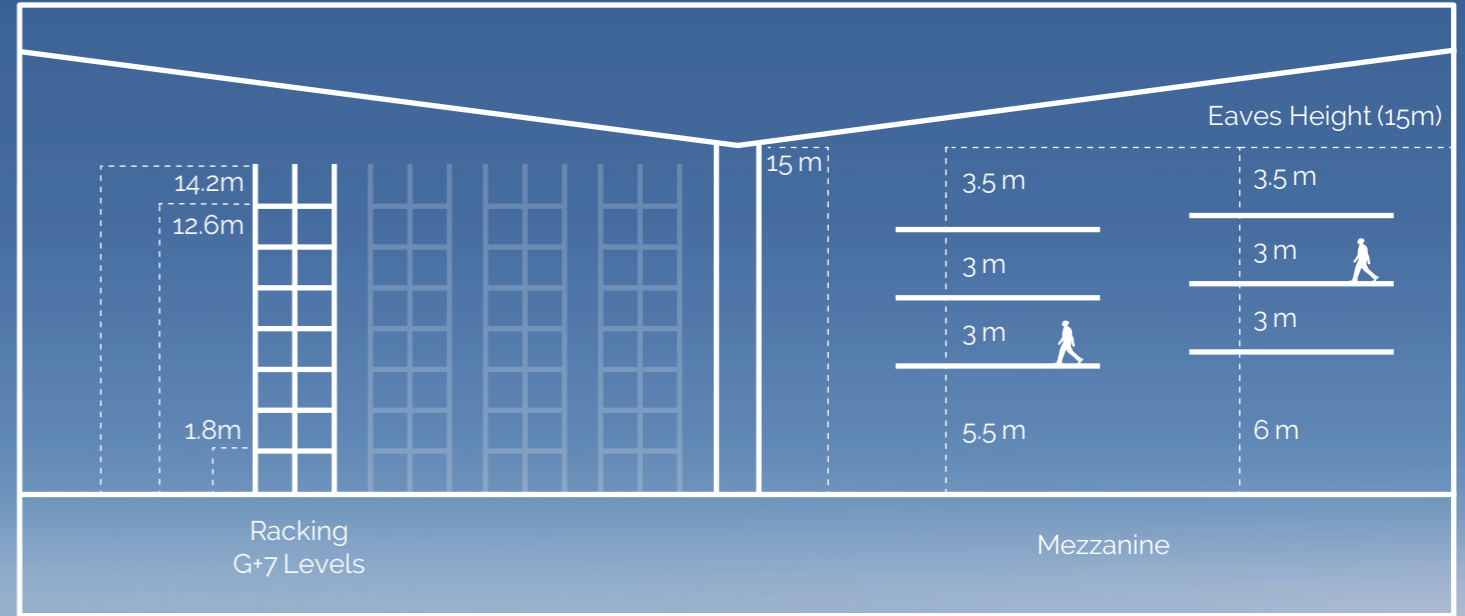
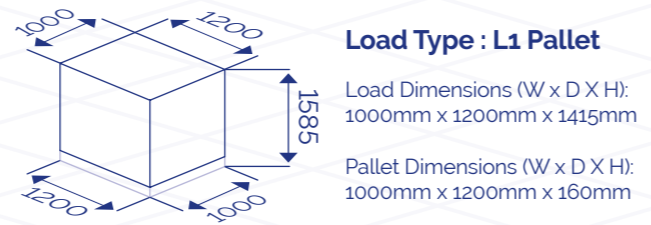
*Estimated figures - more information available on request

SMALL ON FOOTPRINT ...BIG ON VOLUME

With **enhanced clear internal height** we're able to offer **significantly greater** internal volume versus the competition.

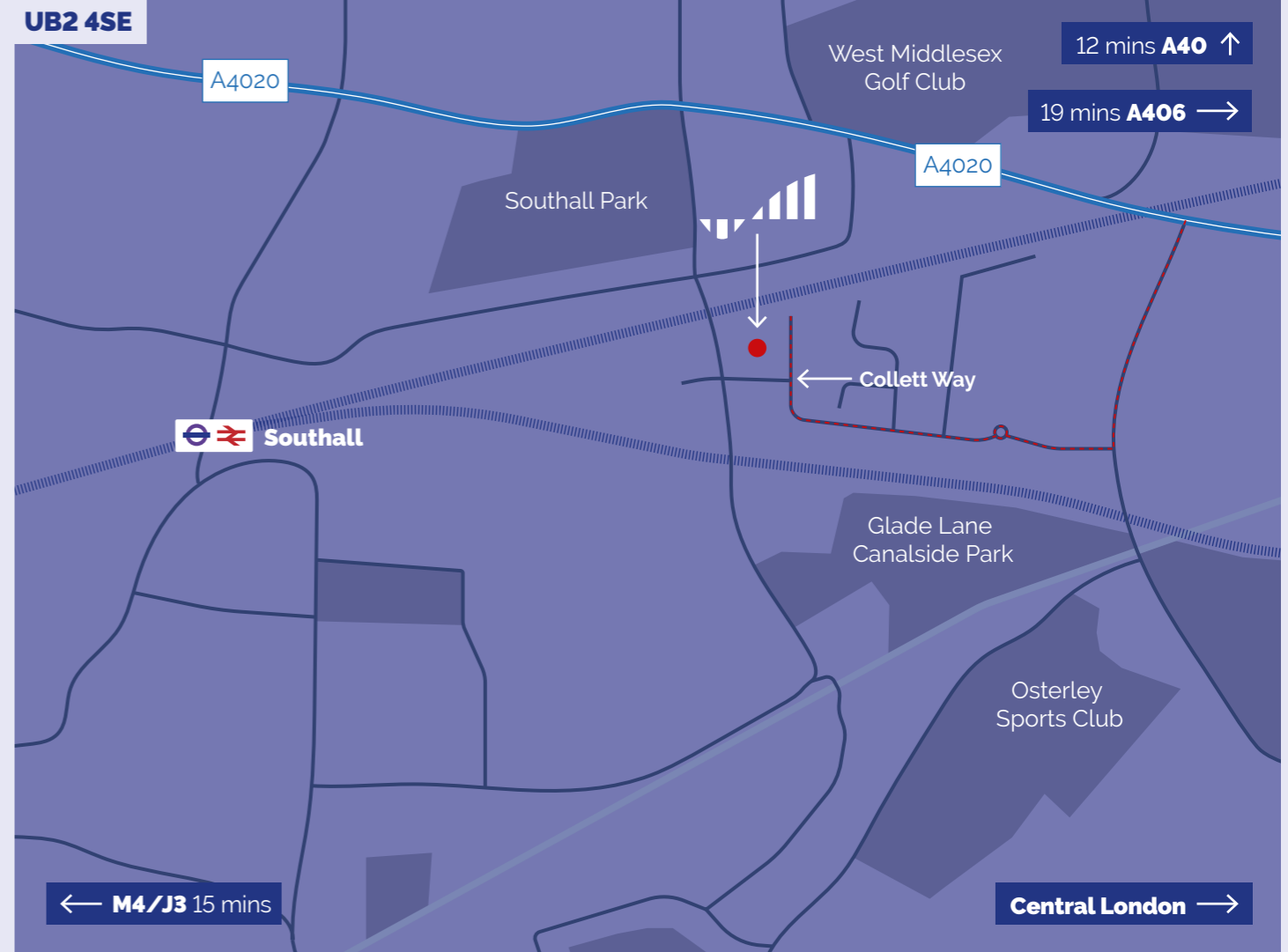
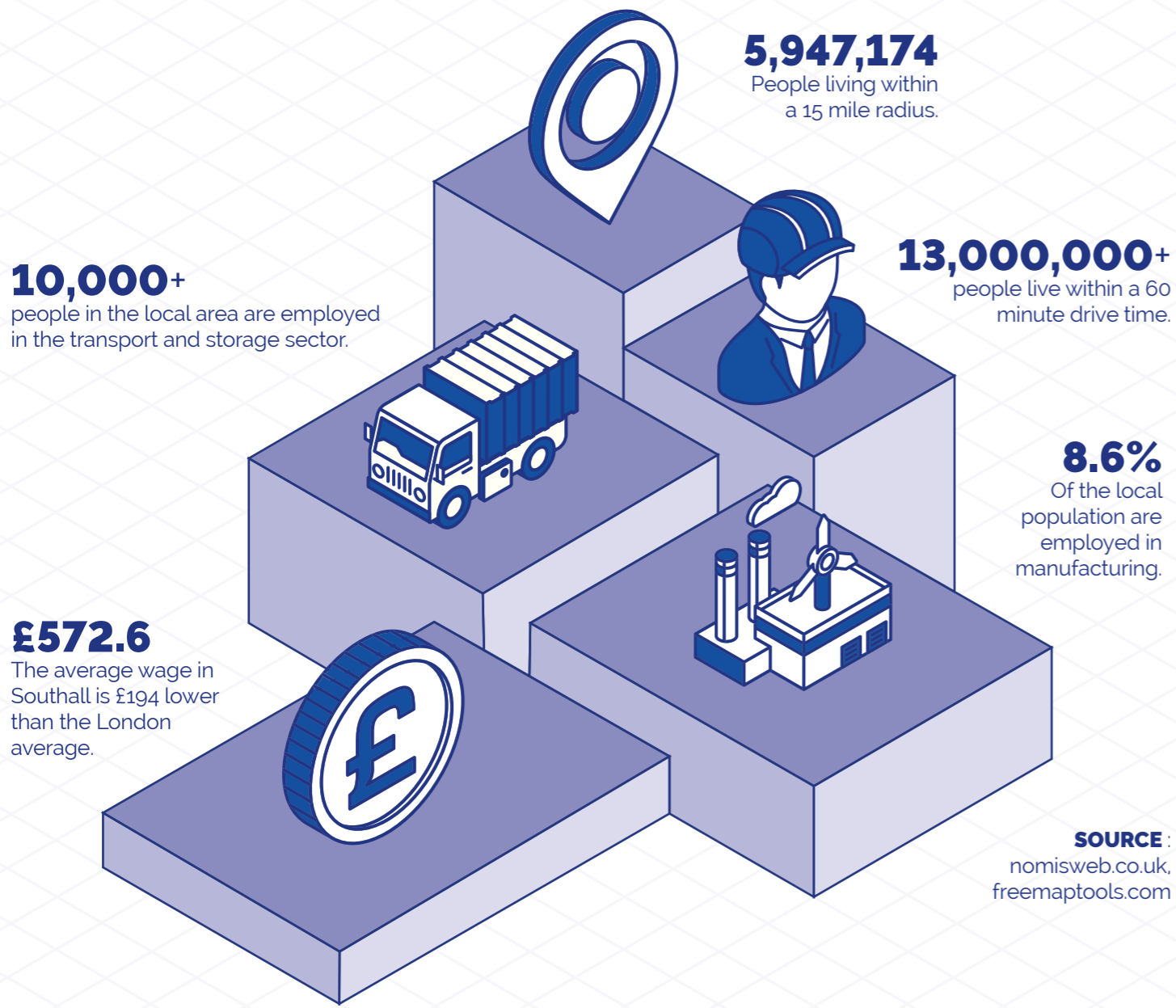


ENHANCED VOLUME
25% more cubic capacity vs. 12m internal height
33% more cubic volume vs. 10m internal height

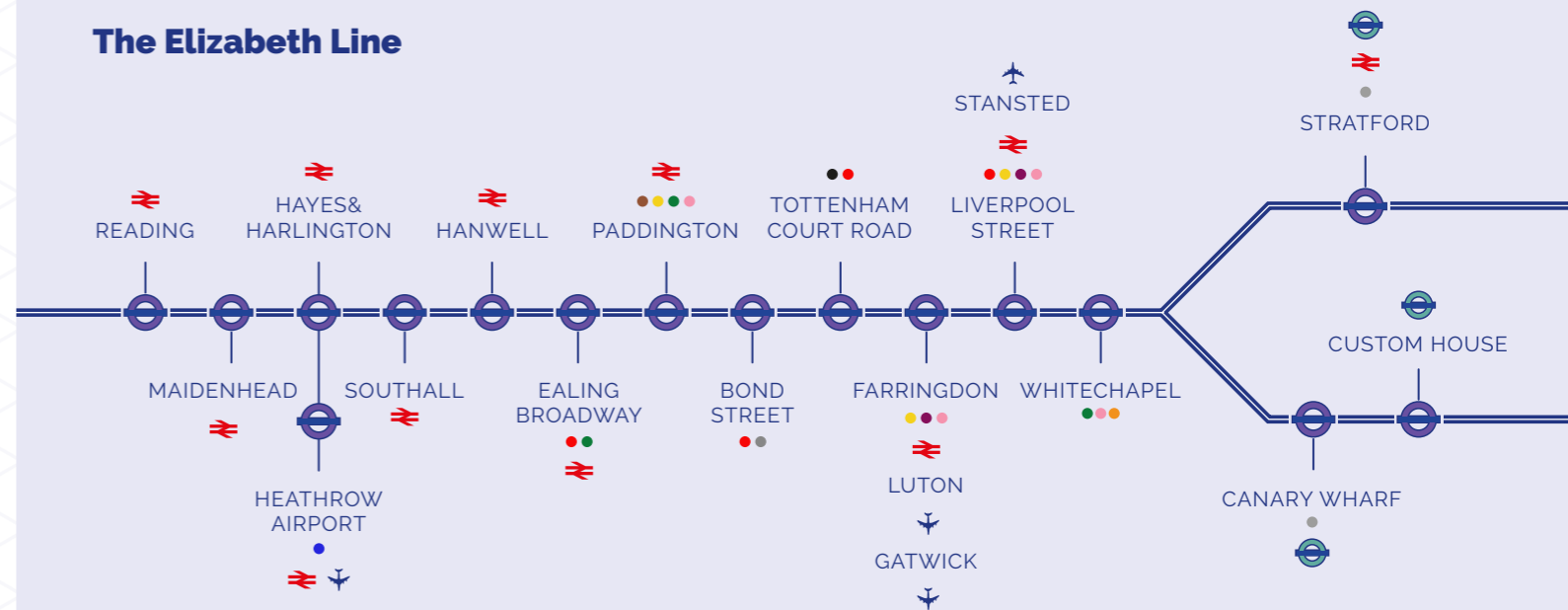


WORLD CLASS LOGISTICS NETWORK

Perfectly located in **Southall**, within ease of **access to central London, Heathrow** and the **wider motorway networks**. With more **advanced** and **sustainable credentials** than other logistic facilities within the area.

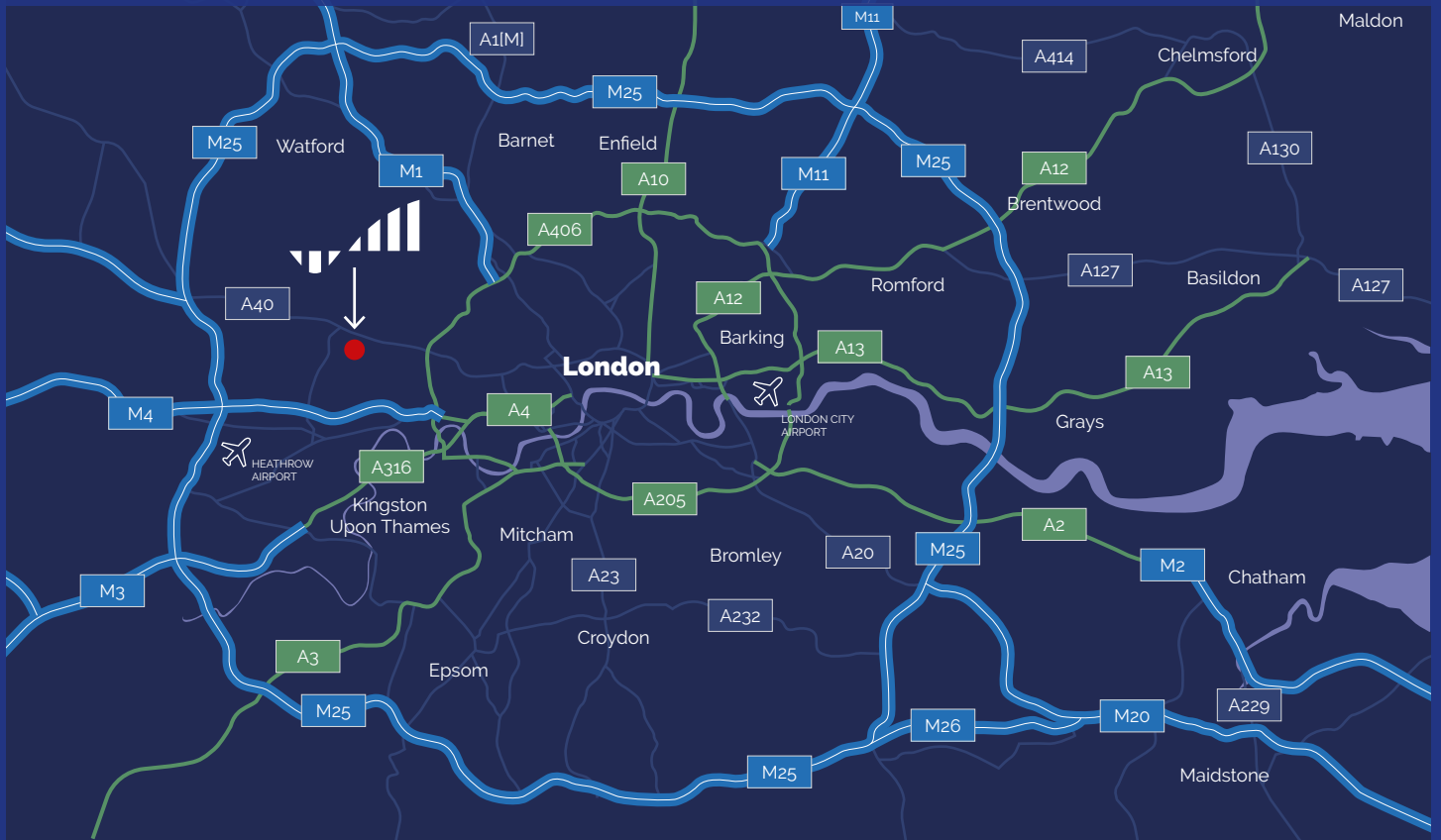







The Elizabeth Line



 View on Google Maps

 habit.crown.hint



-  M4 J3 - 3.9 miles A40 - 4.3 miles M25 J15 - 8.0 miles M40 J1 - 9.7 miles
-  Southall - 1.9 miles Ealing Broadway - 3.3 miles London Bridge - 14.9 miles
-  Paddington - 24 mins Bond Street - 37 mins Liverpool Street - 46 mins
-  DP World - 47.2 miles Southampton - 71.6 miles
-  Heathrow - 5.0 miles London City - 21.1 miles

BRIDGE Is A Vertically Integrated Real Estate Operating Company And Investment Manager Focused On The Acquisition And Development Of Class A Industrial Properties.

ROSE WILLIAMS

Mark Rose
mark@rose-williams.co.uk
07768 718 856

COGENT

Gerry Connolly
gc@cocentre.co.uk
07557 114 583

Will Norman
wn@cocentre.co.uk
07796 774 436

Marco Baio
mb@cocentre.co.uk
07752 473 964

Lambert Smith Hampton

Joe Skinner
jskinner@lsh.co.uk
07739 973 929

Tom Wood
twood@lsh.co.uk
07761 757 976

For the joint agents and the vendors or lessors of this property whose agents they are, give notice that: 1) The particulars are set out as a general outline only for the guidance of intending purchasers or lessors and do not constitute, nor constitute part of, an offer or contract. 2) All descriptions, dimensions, references to condition and necessary permission for use and occupation, and other details, are given in good faith and are believed to be correct but any intending purchasers or tenants should not rely on them as statements or representations of fact but satisfy themselves by inspection or otherwise as to the correctness of each of them. 3) No person in the employment of the joint agents has any authority to make or give any representation or warranty whatever in relation to this property. May 2023, designed & produced by CORMACK - cormackadvertising.com